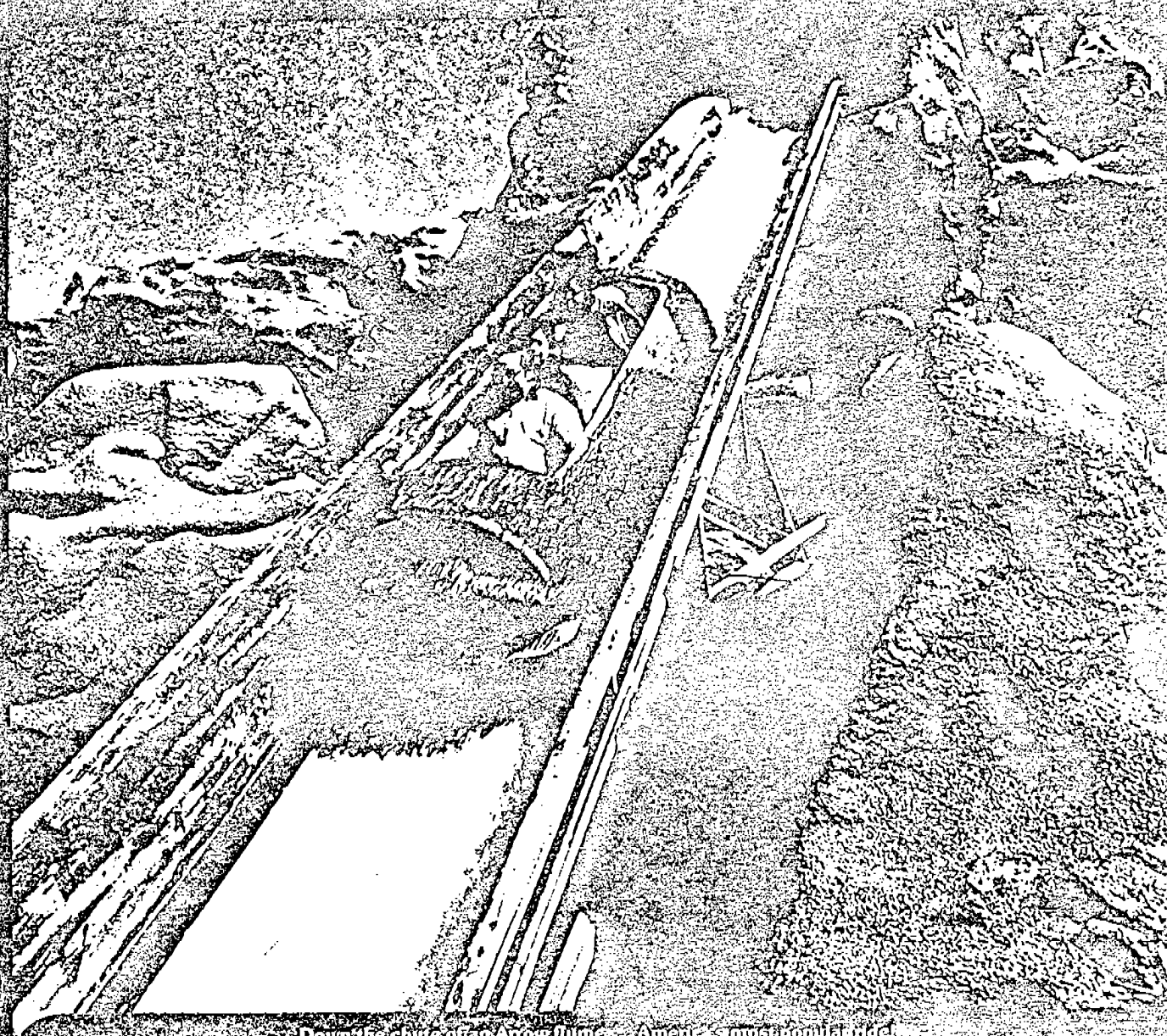


ARROW FL

MFG: ARROW DYNAMICS
RIDE: LOG FLUME



Down the chute of an Arrow flume... Arrow's modular construction.

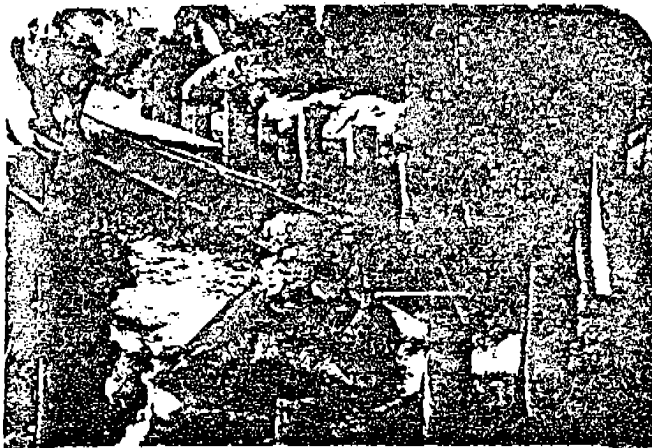
Arrow Log Flumes and HydroFlumesTM—the unique thrill rides that appeal to all ages—custom-designed to satisfy your cost and capacity requirements. Annual attendance increases of 19-30% by parks often are attributed to the addition of this popular crowd-drawing attraction.

Arrow's modular construction process allows you to install a flume matched with your site and theme requirements, and your budget!

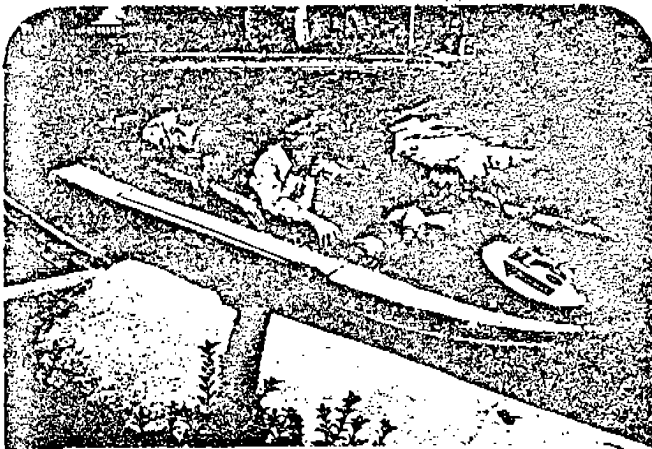


Arrow Development Co., Inc.
1555 Plymouth Street
Mountain View, California 94042
(415) 968-8342

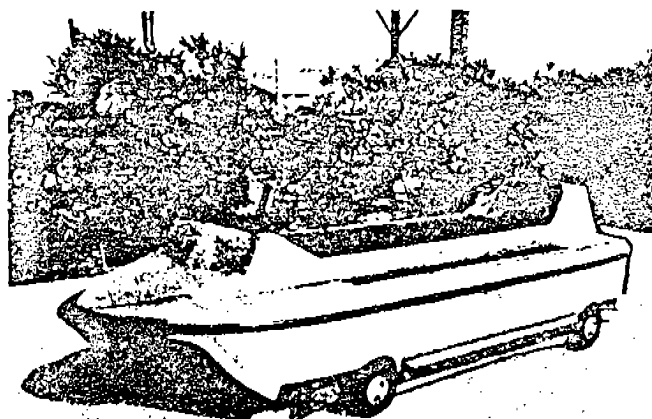
Boats Come in All Shapes and Colors....



The 5 passenger log boat in timber country!

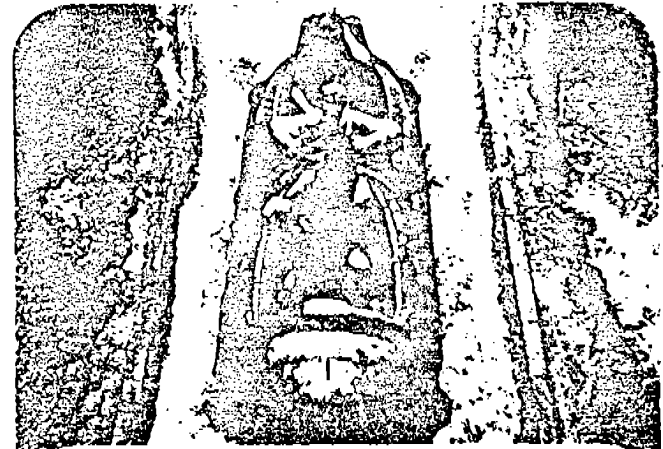


A standard HydroFlume racer coming out of the station.

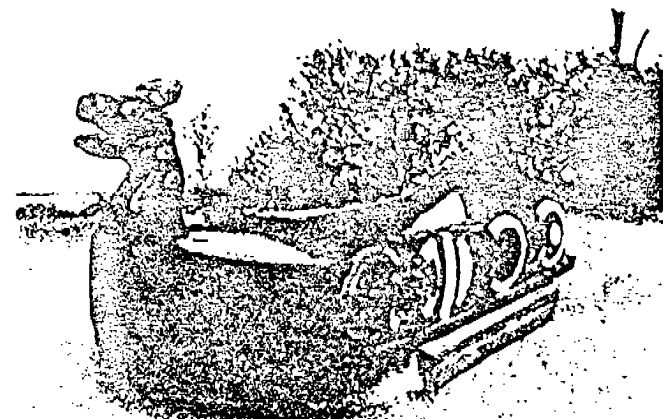


The metal look!

Here are several examples of boats designed for Arrow flumes. All boats are constructed of high-quality, tough fiberglass, with paints impregnated into the glass to resist fading and scratching. Pick a standard log or hydro boat, or let Arrow design a unique boat themed to your park. Rust-proof aluminum running gear, air-filled guide wheels, foam-filled track tires, rust-resistant hand-rails and bow and stern shock absorbers are all standard. Four- or five-passenger models available



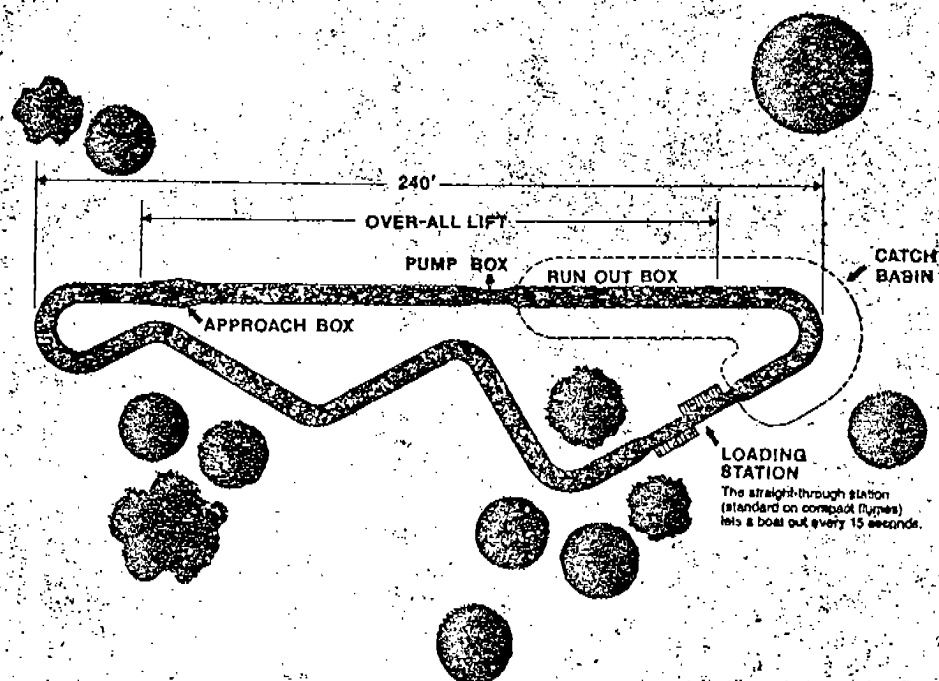
The double-barrel boat hits white water!



A custom Viking boat.



The "Compact" Log Flume



Arrow's economical flume has all of the drawing power and major ride thrills you'd expect to find only in much larger ride configurations. Your patrons climb to spectacular heights, speed down the chute and splash back to the economical, high-capacity loading station after an exciting 600-foot long ride. No special reservoirs are needed; all the water is contained in the trough itself. And, you may be able to use a considerable amount of concrete trough instead of fiberglass and save even more! (Depending on site characteristics.) Capacities of up to 960/hour, with eight four-or five-passenger boats, all for under \$400,000!*

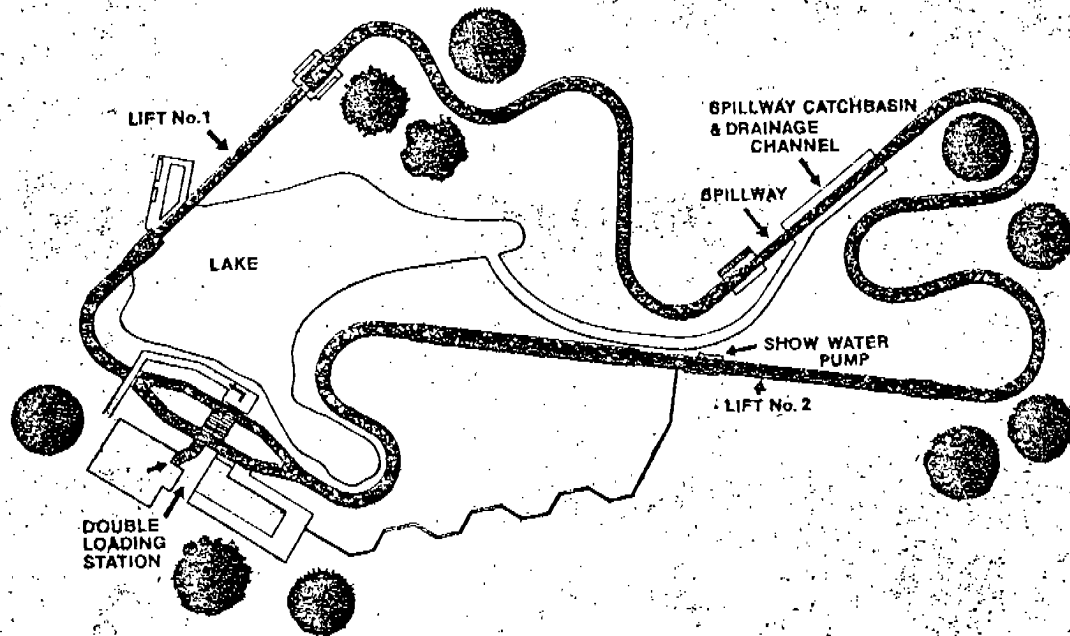
*(Cost may vary with design; installation not included)

A typical Compact Log Flume layout

- overall length: 607'
- ride time: approx. 118 seconds
- one lift with/without "show water"
- eight 4 or 5 passenger boats
- straight-through loading station (about 3 operators)
- capacity: approx. 850-960/hr.
- area: 100 x 300'

Typical Arrow Quality

Always Flexible!



If space and budgets are more flexible, you will want an even longer and more thrilling ride to build capacity and increase overall gate. The Arrow Log Flume can be designed to include any or all of many different ride elements, each with its own individual appeal, adding to the unique exhilaration your patrons experience in this major attraction.

The first lift elevates the boat and sends it speeding into the waterway—through a series of curves, racing into a spillway dip, up the towering final lift and down the chute into the splash of the runout... a last-minute thrill before your passengers disembark at the loading station.

A ride of 1200-1600 feet can provide an hourly capacity of 1440 people or more! (Depending on the type of loading station used and boat dispatch intervals, of course.)

Truly Unique

By utilizing concrete trough construction where feasible, you can lower costs and still maintain quality. Trough

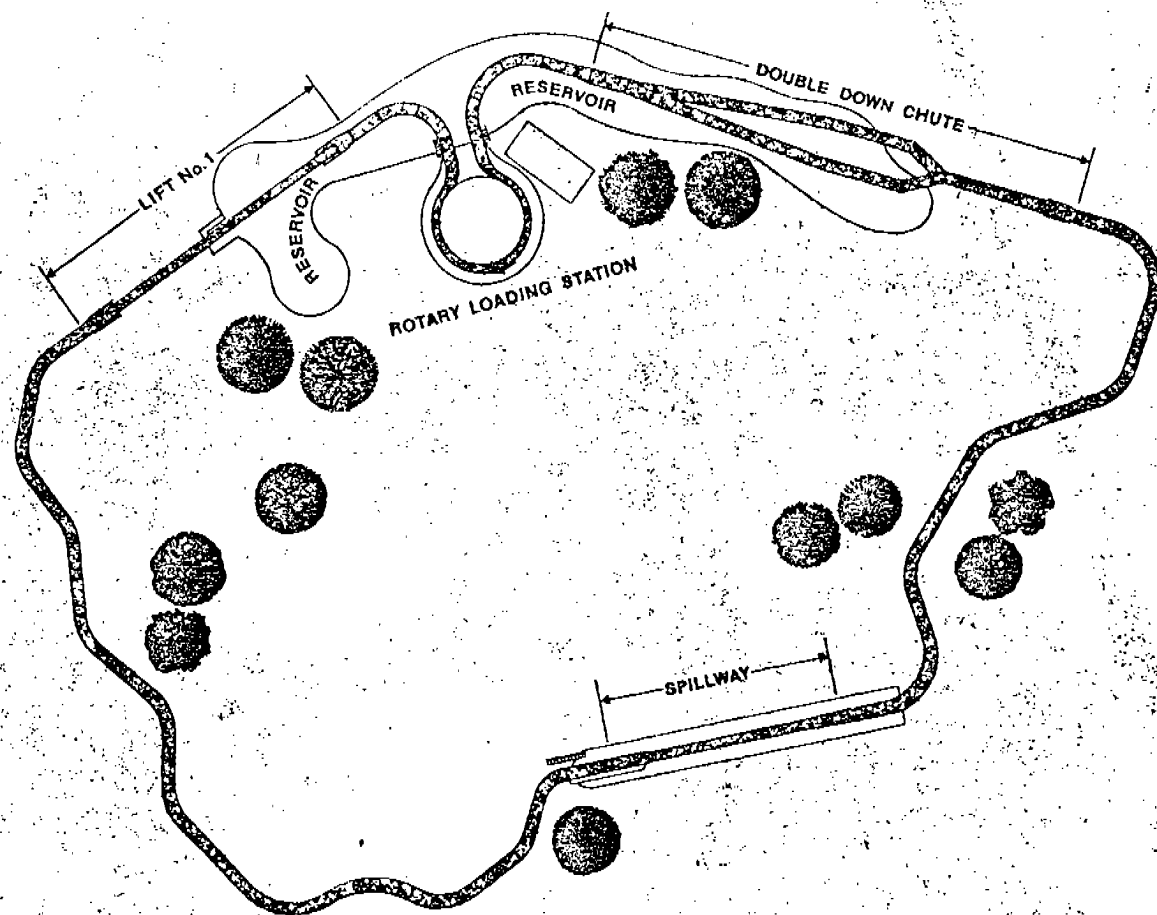
supports can be wood for that "lumber mill" look, or steel for low maintenance reliability. Three types of loading stations are available for most flumes, providing capacity for 850-2400 people/hour with a minimum number of operators. Make your lifts as high as you want; include optional spillways or chutes, curves and cross-overs. Design your own boat (or let us do it for you), or use the standard high-quality Arrow boats constructed of tough, scratch and fade resistant fiberglass. All flume components are available in over 100 different colors to blend with any environment!

An intermediate-size Log or HydroFlume layout

- 1636' long
- 2 lifts, 1 spillway
- 25 boats
- capacity: approx. 1440-1800/hr.
- double loading station (about 5 operators)
- area: 175 x 430'

Like all Arrow rides, the Flumes are manufactured from the highest quality materials available. Nothing exceeds the family drawing-appeal of an Arrow Flume, and you are assured of low-maintenance operation and the ultimate in patron safety features. Call Arrow today, and see how easily you can add this truly unique major ride attraction to your park. All at a cost that is surprisingly low in relation to the quality and popularity you've come to expect from Arrow products.

Log or Hydro?



Many parks install both a standard Log Flume and a HydroFlume! The HydroFlume also appeals to family groups, but adds new dimensions of ride excitement. Instead of a sudden slowdown and large splash at the bottom of the down ramp, typical in Log Flume rides, the *Hydro* boat passes over a submerged "hydrojump" and shoots out into the runoff trough at high speeds. (All Arrow boats are bump-protected and guided through the trough to eliminate side-wall damage.) Use a fast-in/fast-out Arrow rotary loading station, *double* down chutes, and handle up to 2400 excited riders every hour! The use of a rotary station allows payroll savings too, because the number of operators required—in relation to capacity—is less than afforded by any other type of station.

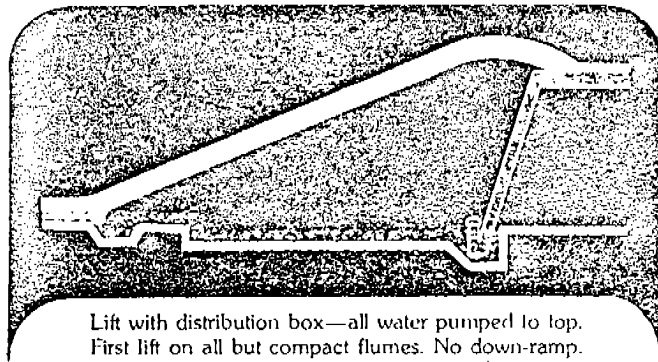
An example of a large Log or HydroFlume

- 2170' long, 236 second ride
- 1 lift, 1 spillway, 1 double chute
- rotary loading station (5 or 6 operators)
- 34 boats
- 1800-2000/hr. capacity, approx.
- 200 x 500' area

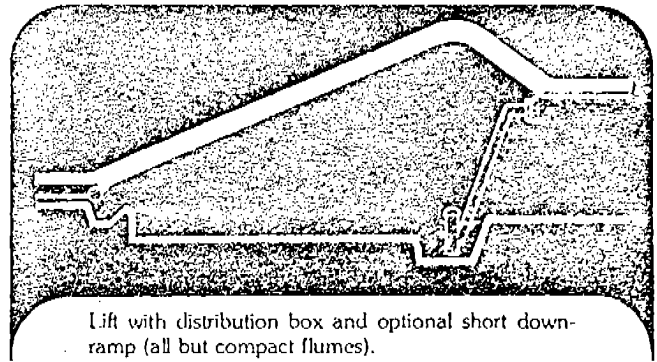


Typical Arrow Quality

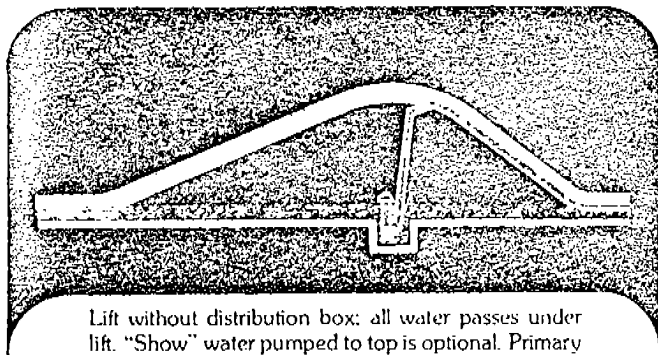
SELECT A VARIETY OF RIDE PATTERNS



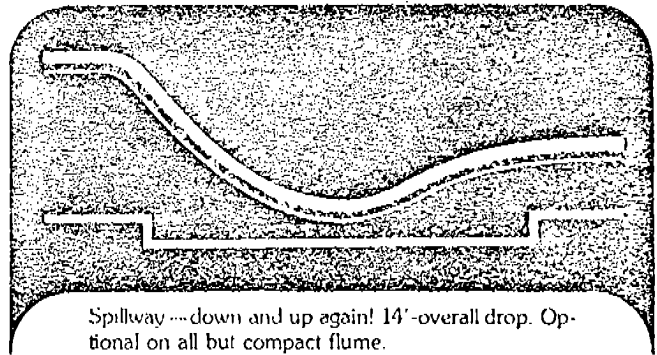
Lift with distribution box—all water pumped to top. First lift on all but compact flumes. No down-ramp. Continuing trough has gradual elevation drop.



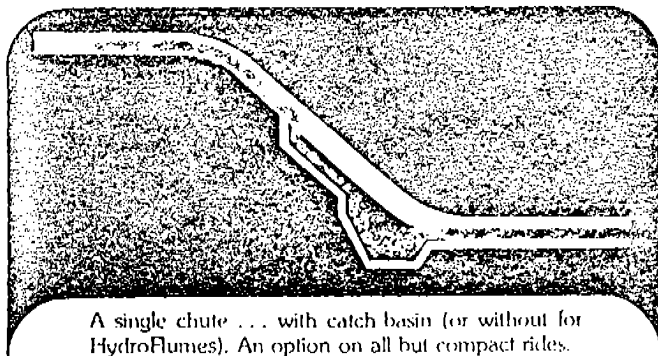
Lift with distribution box and optional short down-ramp (all but compact flumes).



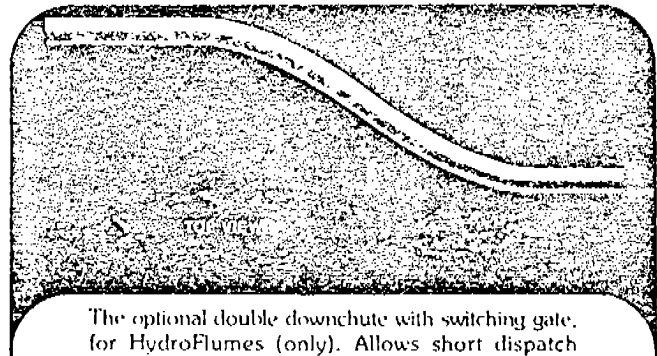
Lift without distribution box: all water passes under lift. "Show" water pumped to top is optional. Primary lift for compact flumes. Optional second lift all other flumes.



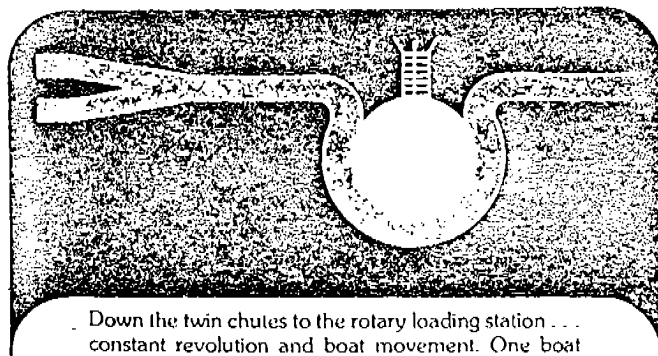
Spillway—down and up again! 14'-overall drop. Optional on all but compact flume.



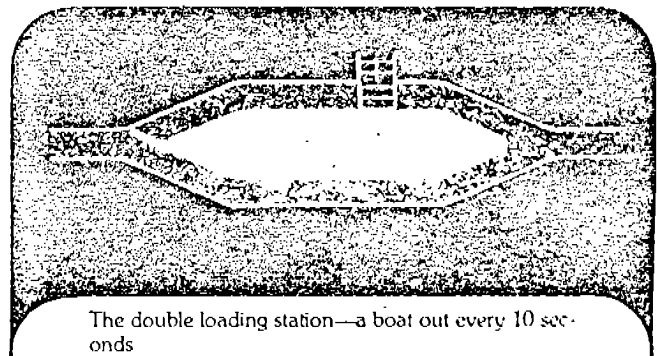
A single chute ... with catch basin (or without for HydroFlumes). An option on all but compact rides.



The optional double downchute with switching gate, for HydroFlumes (only). Allows short dispatch intervals—with safety, for maximum capacity. (A patented arrow exclusive)



Down the twin chutes to the rotary loading station ... constant revolution and boat movement. One boat out every 7 or 8 seconds, with a minimum number of operators ... another patented Arrow exclusive!



The double loading station—a boat out every 10 seconds