

45 FOOT, TRAILER MOUNTED

SUPER SLIDE

▲▲▲▲▲▲▲▲▲▲

**OPERATION AND
MAINTENANCE MANUAL**

DARTRON INDUSTRIES, INC.
P.O. BOX 13114
SALEM, OREGON 97309

◆ INTRODUCTION ◆

This manual is intended to be used as a general guide for the operation and maintenance of your ride. Dartron Industries, Inc. is constantly striving to improve performance, efficiency and safety; therefore, certain improvements may not be reflected in the text of the manual. Any major revisions or additions to the manual will be sent to you free of charge. Specially-engineered features purchased for individual rides may not be incorporated in the manual.

◆ MANUFACTURER'S LIMITED WARRANTY ◆

Dartron Industries, Inc. warrants that purchased property is free from all defects in material and workmanship at the date of delivery and for 90 days thereafter. Dartron Industries, Inc. does not warrant that purchased property will meet or exceed federal, state and local design criteria or electrical codes. Dartron Industries, Inc.'s liability is hereby limited to the repair or replacement of any equipment, accessory or part which is defective due to material failure or workmanship. The cost of returning defective parts to Dartron Industries, Inc. and the cost of transportation of repaired or replaced parts to Purchaser shall be born by Purchaser. Dartron Industries, Inc. shall not be liable for down-time or loss of operating revenue or any other commercial consequential damages. Losses resulting from improper maintenance or failure to observe Dartron Industries, Inc.'s operating instructions are expressly excluded from this warrant. Purchaser hereby acknowledges receipt of current operating, maintenance and erection instructions, a copy of which is attached to this agreement and made a part hereof.

It is expressly understood between Dartron Industries, Inc. and Purchaser that all warranty is void and Dartron Industries, Inc. disclaims any and all liability or responsibility for failure, loss or damage if device is assembled, maintained or operated other than as recommended in the Manual provided with each device or is loaded or operated in excess of the operator's operating criteria set out in the appropriate manual.

THIS WARRANTY, AND THE OBLIGATIONS AND LIABILITIES OF DARTRON INDUSTRIES, INC. HEREUNDER ARE IN LIEU OF ALL OTHER WARRANTIES, GUARANTEES, CONDITIONS OR LIABILITIES, EXPRESS OR IMPLIED, INCLUDING WARRANTIES OF MERCHANTABILITY AND FITNESS FOR A PARTICULAR PURPOSE AND SHALL NOT BE EXTENDED, ALTERED OR VARIED EXCEPT BY WRITTEN INSTRUMENT SIGNED BY DARTRON INDUSTRIES, INC. AND PURCHASER.

TABLE OF CONTENTS

Introduction and Warranty	I
Table of Contents	II
Operation Instructions	III
Specifications & Power Supply Requirements	1
General Description of Slide	2
Space Diagram for 45' Slide	3
Description of the Area Needed to Erect the Slide	3
Set-Up Instructions	4
Fence Layout Diagram	15
General Maintenance	16
Maintenance Checklist	16
Troubleshooting Guide - Electrical System	17
Troubleshooting Guide - Hydraulic System	18
Information Required for Service Parts Orders	19
Parts List	20

OPERATION OF THE SLIDE

A minimum of two operators should operate the slide.

1. One man on top of the slide.
 - a. Regulate the flow of sliders so that there are no collisions at the bottom of the slide.
 - b. Ensure that all riders are sitting and positioned properly before sliding.

NOTE: All sliding should be done in an upright, sitting position, with feet in the mat pocket and hands holding up the sides of the sliding mat.

CAUTION: Absolutely no sliding should be done backwards or in a prone or standing position.

- c. Very small children have a tendency to "fishtail" and should slide with an adult.
2. One man at the bottom of the slide.
 - a. Regulate the traffic up the steps.
 - b. Make sure people use handrails as they climb the steps.
 - c. Assist people to get up after completing their ride.
 - d. Collect the sliding mats.

SPECIFICATIONS

Capacity	740 customers per hour
Lighting for Slide and Electric Sign	(280) 12-watt turbo-lights, (16) 40-watt bulbs, (2) 30-watt and (2) 40-watt fluorescent tubes [16 plastic bubble light fixtures, each with 10 exterior turbo-lights and one interior light. Electric sign has chasing turbo-lights and 4 fluorescent interior tubes.]
Total Power Required	16 KW
Set-Up & Take-Down Time	1 1/2 hour with 3 men
Maximum Height	35 feet
Minimum Width without Fence	8' 0"
Minimum Width with Fence	19 feet
Sliding Length	100 feet
Total Space Required to Set-Up, inc. Fence Area	35 x 19 x 120 feet
Length of Trailer	45 feet
Gross Weight of Trailer	25,000 pounds

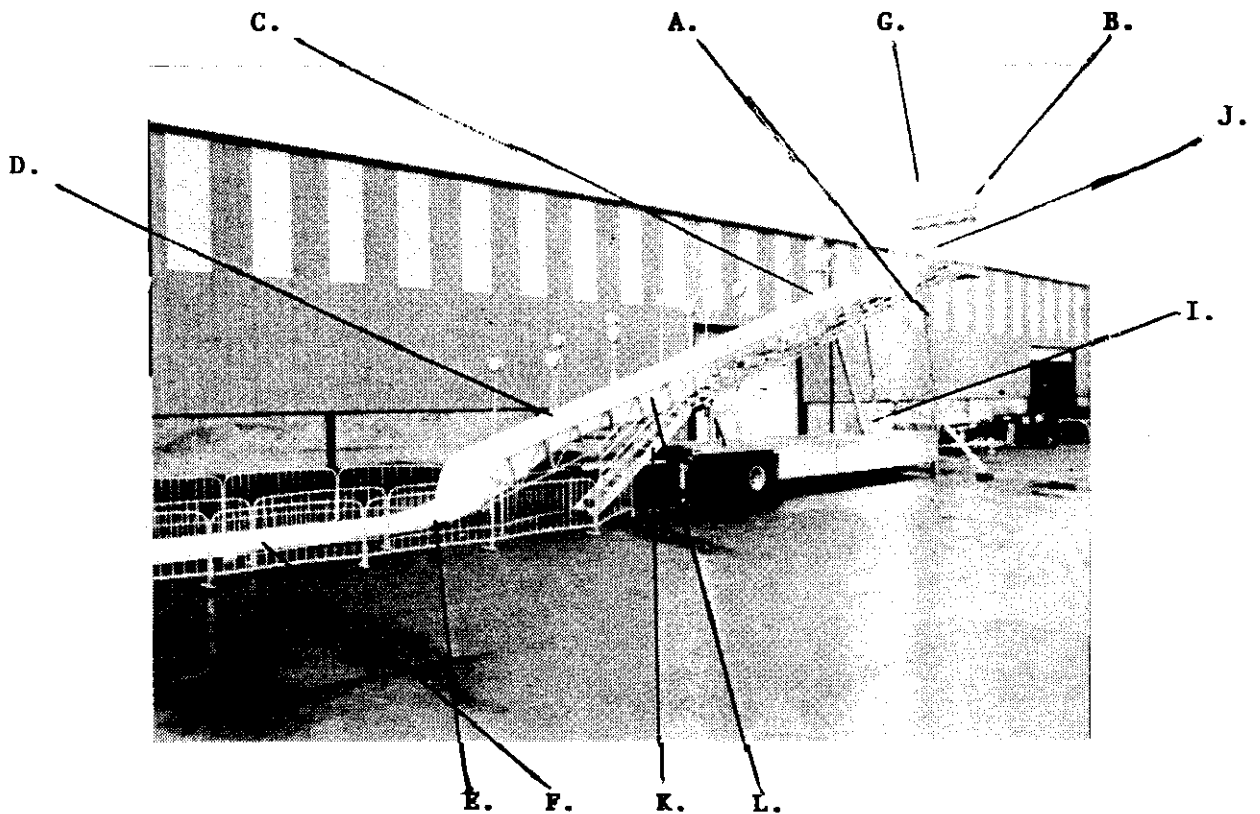
POWER SUPPLY REQUIREMENTS

1. The maximum power needed for the sign and the slide heaters is 16 KW.
2. The slide requires 220V single phase with ground.

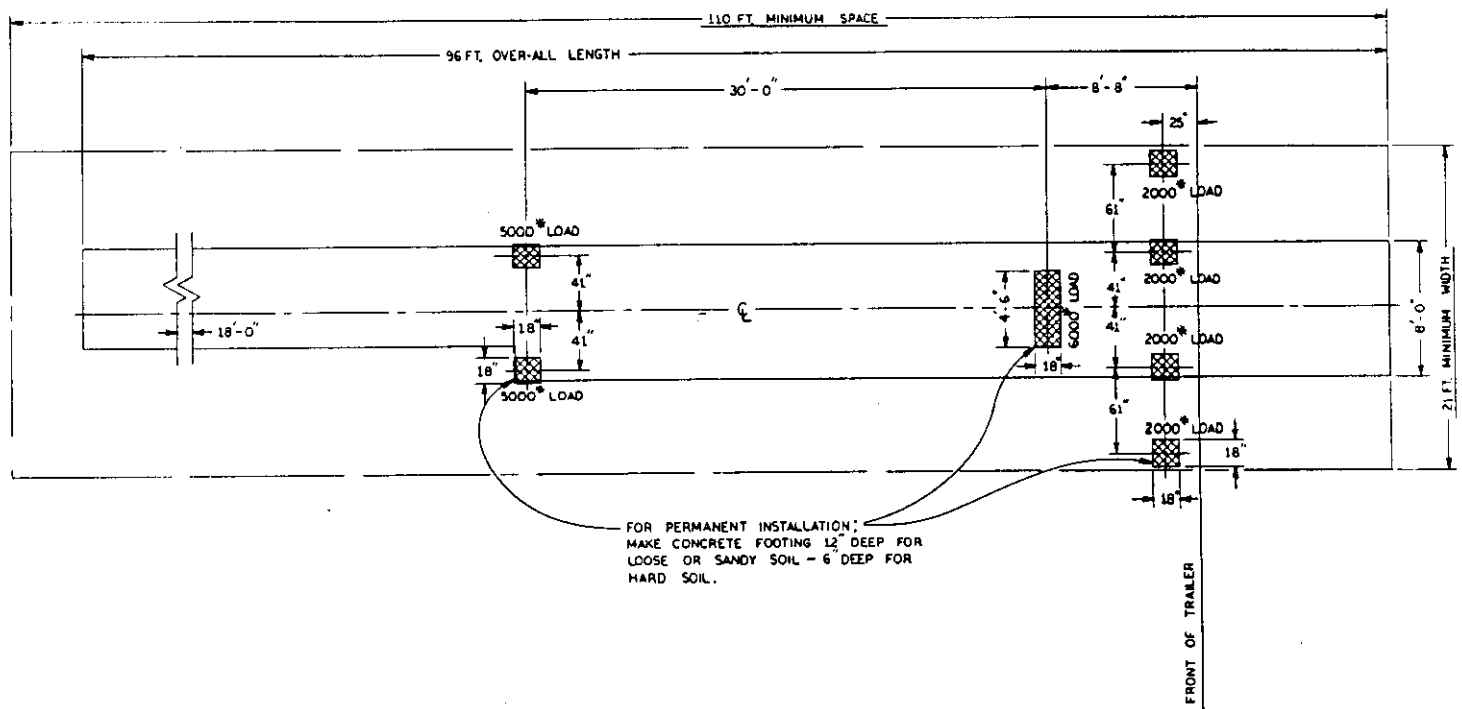
CAUTION: Failure to supply an adequate ground to the frame can cause serious electric shock hazard. Proper grounding prevents the metal parts of the slide from being energized (to high voltage) in the event of a short circuit. The lead supplied with the slide contains a ground wire that may be connected to ground at the power supply. Another means of grounding is with a ground rod. Check local regulations for ground rod requirements and specifications.

GENERAL DESCRIPTION OF THE SLIDE

- | | |
|---|-------------------------------------|
| A. STANDING SUPPORT BRACKET | G. ELECTRIC SIGN |
| B. FOLD-DOWN LOADING PLATFORM | H. FOLD-DOWN LIGHT POLES |
| C. UPPER SLIDE SECTION | I. BAG BOX |
| D. 18' RE-MOVEABLE SECTION | J. STARTING GATES |
| E. 16' LOWER SECTION (STORED IN POSSUM BELLY) | K. LOWER SLIDE STEPS (POSSUM BELLY) |
| F. 12' TAIL SECTION (STORED IN POSSUM BELLY) | L. STEP HAND-RAIL |



SPACE & FOUNDATION DIAGRAM FOR PORTABLE SLIDE



SKETCH 1

DESCRIPTION OF THE AREA NEEDED TO SET UP THE SLIDE

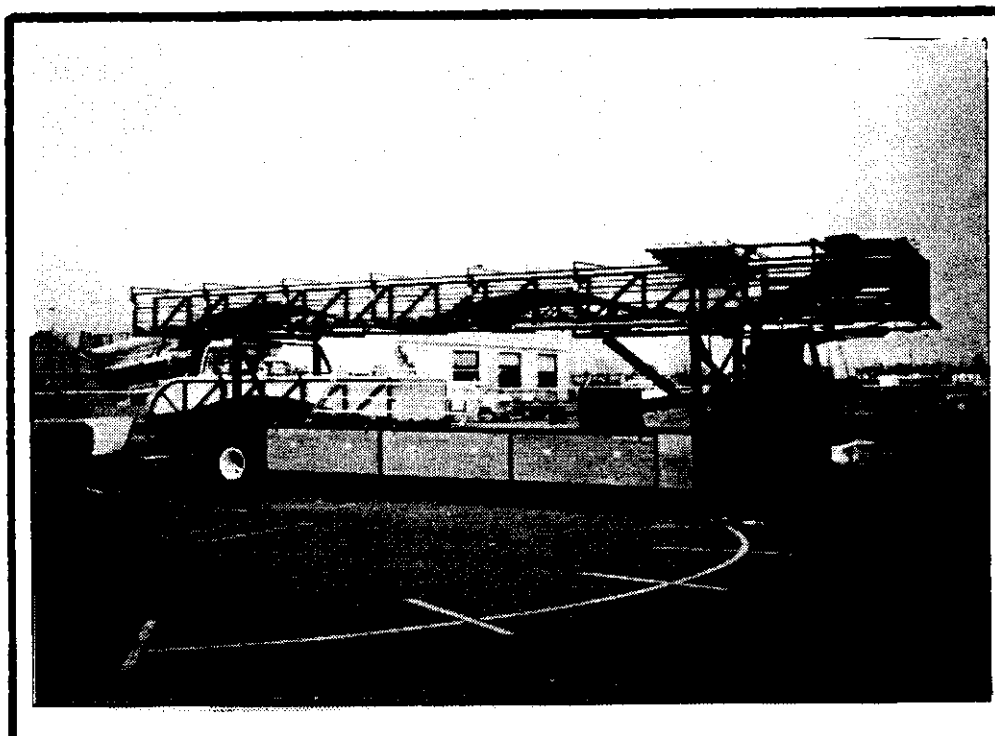
1. The front of the Slide must have at least 10 feet clearance from any obstruction. When the electric sign is pulled up to operating position, it passes a parallel position to the ground. At this point, the sign extends 10 feet from the end of the top front Slide section.
2. When the Slide is in operating position, people on the Slide should not be able to reach out and touch trees, buildings, light or telephone poles, signs or power lines.
3. The surface on which the ride is set up must be hard enough so that no settling of the Slide will occur.
4. The surface on which the ride is set up must be level so that the Slide can be properly leveled.

SLIDE SET-UP

THE SLIDE CAN EASILY BE SET UP IN 1 HOUR BY 3 MEN.

ALL THE EQUIPMENT THAT IS NEEDED TO SET UP THE SLIDE CAN BE FOUND IN THE TOOL BOX, SLIDE BAG BOX OR ON THE ASSEMBLY PARTS.

THE SLIDE IS PROVIDED WITH A 6'X 10' SAFETY MAT WHICH IS TO BE PLACED AT THE END OF THE SLIDING SURFACE WHEN IN OPERATION.



1. Set trailer on a level and firm ground location. Connect to A.C. power source or activate D.C. pump (option).

LOWER FRONT AND REAR LANDING GEAR.

USING BUBBLE LEVEL ON THE TRAILER FRAME,
LEVEL THE TRAILER, FRONT TO
REAR AND SIDE TO SIDE.

PULL OUT REAR TRAILER EX-
TENSION TO THE RED LINE.
REMOVE EXTENSION SUPPORT
FROM THE POSSUM BELLY.
ATTACH TO EXTENSION AND

ADJUST FEET TO SUPPORT AT NEEDED POSITION. (FIG.1)

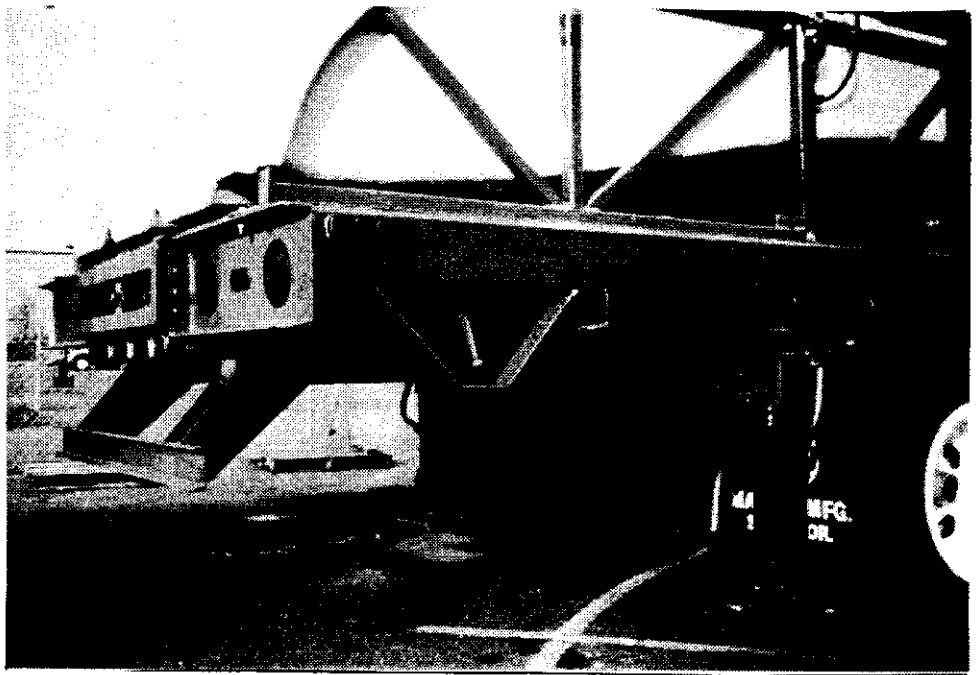


FIG.1

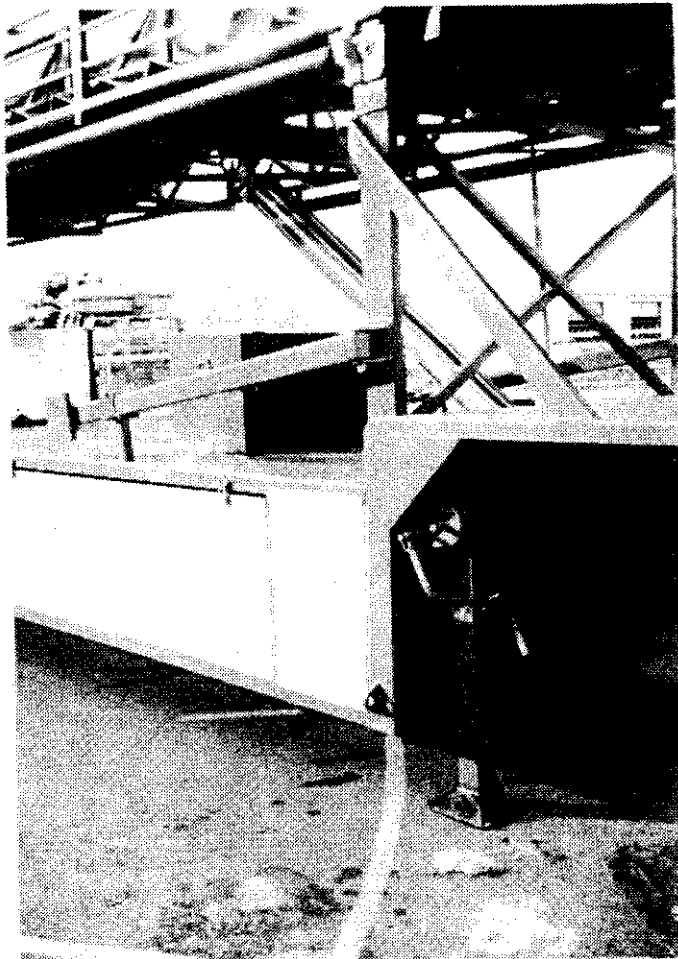


FIG.2

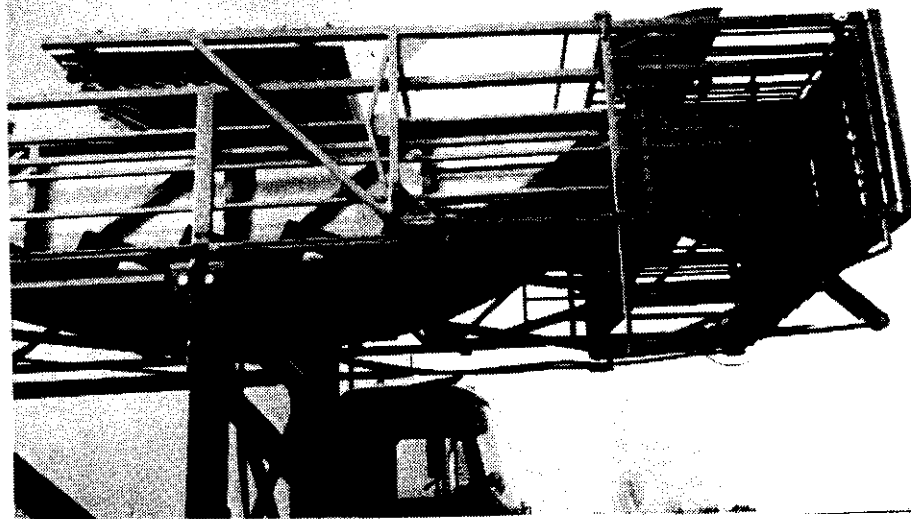
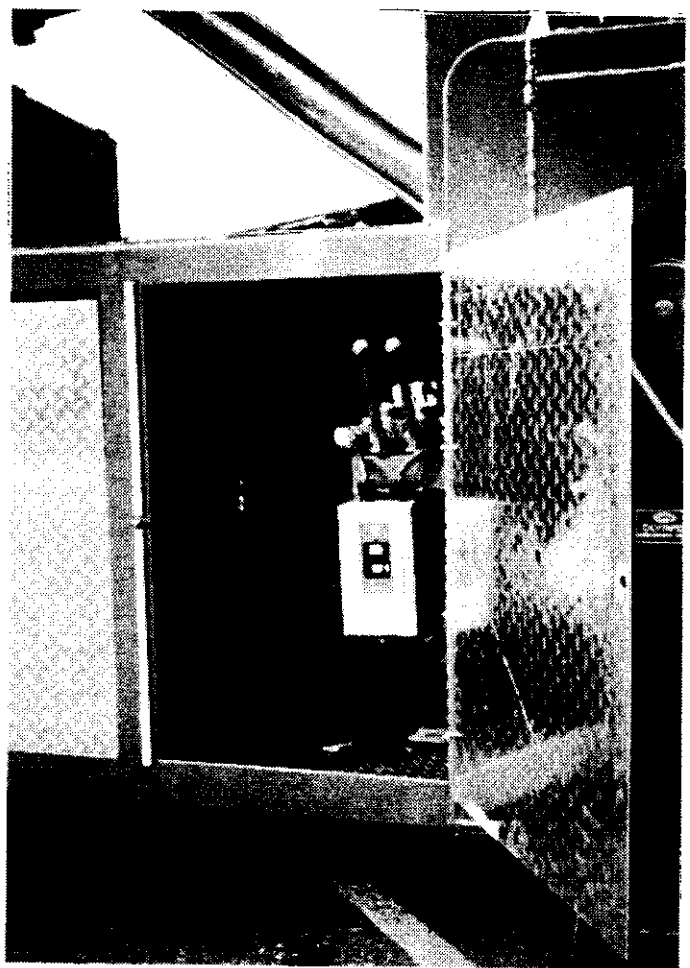
SWING OUT FRONT MUD SILLS AND STABALIZE
WITH TURNBUCKLES.

REMOVE PINS AND BOLTS HOLDING THE SLIDE IN RACKED POSITION.

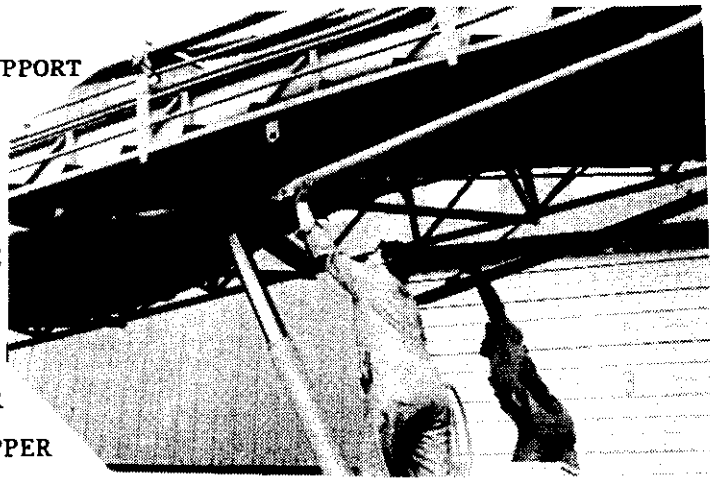
BEFORE ENERGIZING PUMP BE SURE THE OPTIONAL HYDRAULIC VALVE SELECTOR IS IN THE PROPER POSITION. A.C. OR D.C..

USING THE HYDRAULIC CONTROL LEVER #1 (LOADING PLATFORM) RAISE THE LOADING PLATFORM INTO THE UPRIGHT POSITION.

NOTE: ON UNITS BEFORE #MS 126-91 INSTALL TWO PLATFORM STABILIZING BARS, STORED IN THE POSSUM BELLY.



REMOVE THE PINS THAT HOLD THE SUPPORT ARMS AGAINST THE SIDES OF THE SLIDE FRAME. NOTE: TWO MEN MUST GUIDE THE SUPPORT ARMS AS THEY LOWER FROM THEIR STORAGE POSITION. TURN ON THE HYDRAULIC SYSTEM SWITCH. PULL BACK THE CONTROL LEVER TO RAISE THE UPPER SLIDE FRAME. SLOWLY RAISE THE UPPER SLIDE FRAME. GUIDE THE SUPPORT ARMS AS THEY SWING FORWARD AND HANG DIRECTLY OVER THE STANDING SUPPORT BRACKETS. LOWER SLIDE SECTION AND ALIGN SUPPORT BARS THEN PIN



RAISE ROLL-OUT SECT-

ION OFF OF THE TRAILER WITH THE HYDRAULIC LIFT DOLLY MOUNTED UNDERNEATH AND THEN ROLL OUT TO THE END OF TRAILER EXTENTION. Fig. 12 & 13

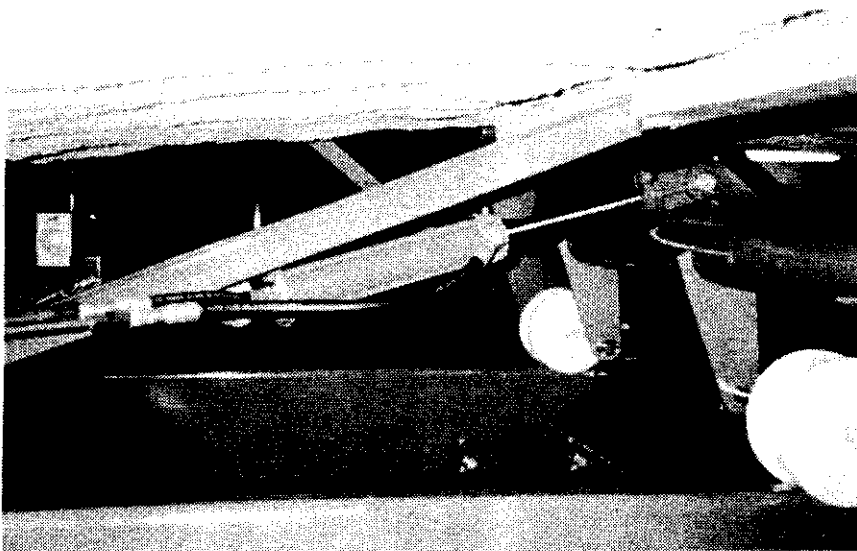


FIG. 12

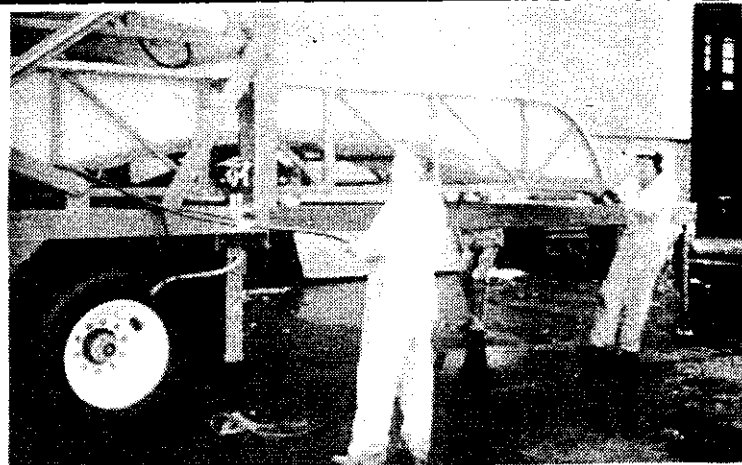


FIG. 13

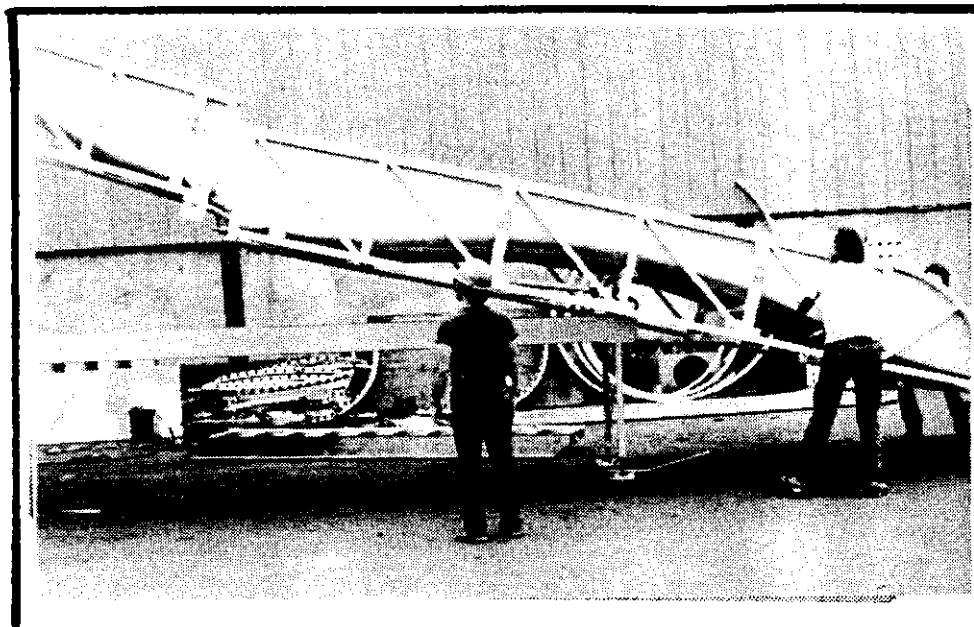


FIG. 20

SLIDE ROLL-OUT SECTION TO THE LEFT 8" (SLIDE THE WHEELS ON THEIR OWN AXLES) UNTIL IT CAN ALIGN WITH THE MIDDLE SECTION.

LOWER THE ROLL-OUT SECTION BY USING THE HYDRAULIC LIFT DOLLY MOUNTED UNDERNEATH THE ROLL-OUT SECTION.

(SEE Fig.12,)



TIP ROLL-OUT SECTION UP AND ALIGN IT WITH THE MIDDLE SECTION.

PUSH THE TWO SECTIONS TOGETHER AND BOLT USING 4-3/4" X 6" BOLTS.

(Fig.21)

FIG. 21

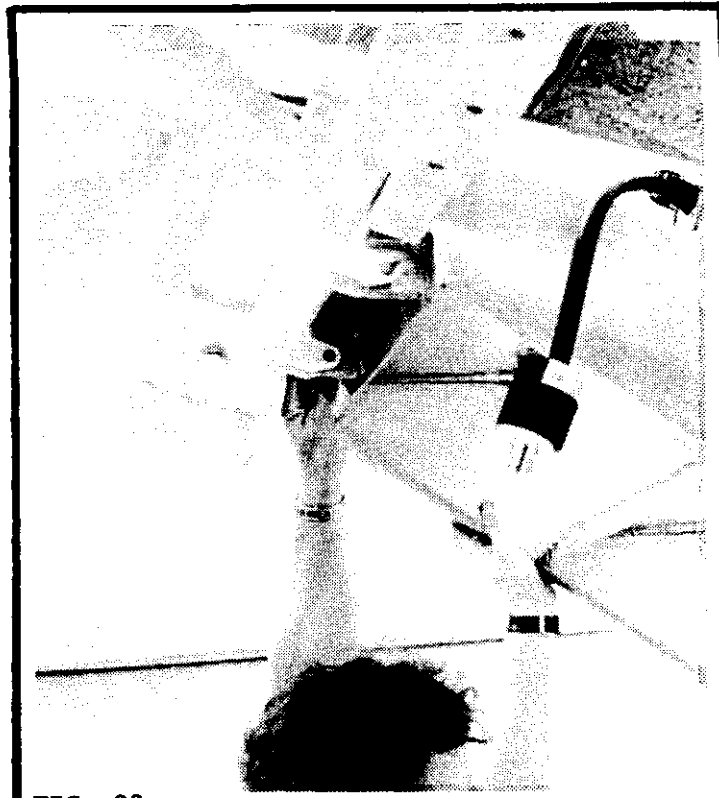


FIG. 23

REMOVE LADDER AND HANDRAIL FROM POSSUM BELLY AND PIN IN PROPER LOCATION AT LOWER END OF STAIRWAY. (Fig.23) INSTALL GROUND JACKS TO LEVEL LADDER.

PROPERLY POSITION 16' SECTION USING GROUND FEET TO HELP ALIGN WITH 18' SECT..



FIG. 24

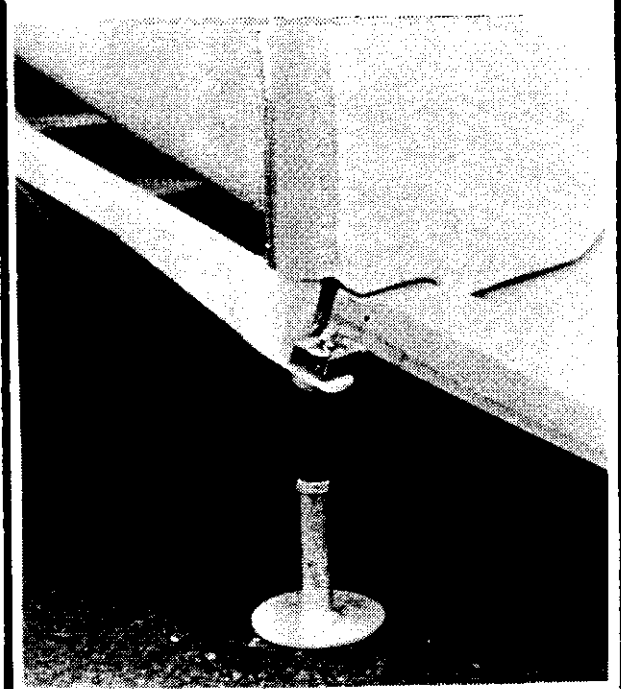


FIG. 25

REMOVE 12' SECTION FROM POSSUM BELLY AND INTERLOCK TO THE END OF 16'
SECTION.

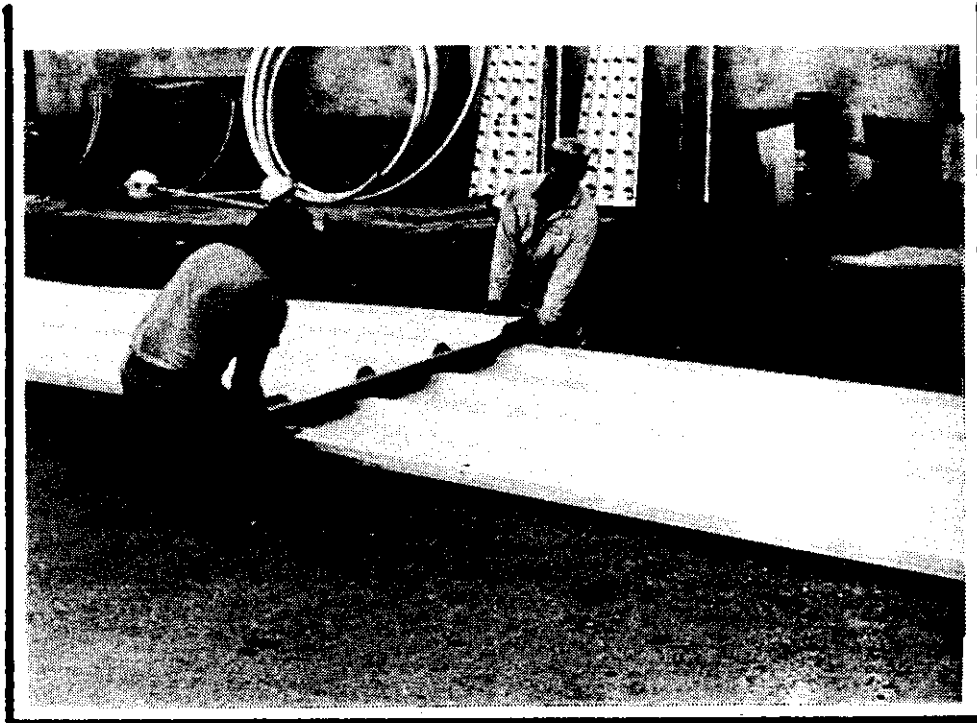


FIG. 26

INSTALL LANDING CARPET. (STORED IN POSSUM BELLY).

ON UNITS BEFORE #MS 126-91 YOU HAVE
TO REMOVE LIGHTS FROM THE POSSUM
BELLY (Fig. 27) AND INSTALL IN
BRACKETS ON THE SIDE OF SLIDE FRAME.
(Fig. 28) TIGHTEN BOLTS AND PLUG THEM
IN. LATER SLIDES HAVE FOLD-DOWN POLES.

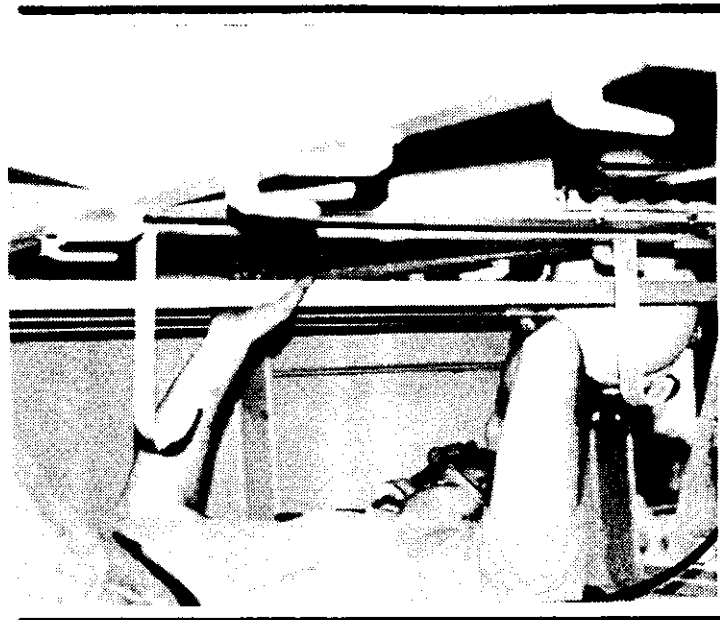


FIG. 27

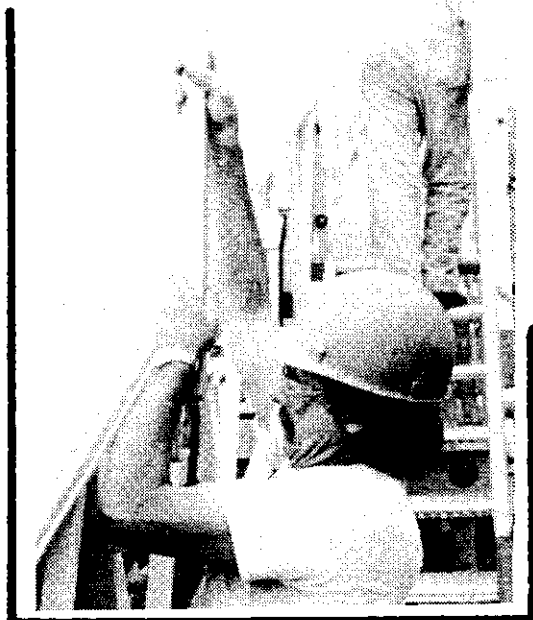


FIG. 28

REMOVE STARTING GATE DIVIDERS FROM
THE BACK OF LOADING PLATFORM (Fig.29)
AND INSTALL AT TOP OF SLIDE.
PIN IN PLACE.



FIG. 29



FIG. 30

REMOVE RIDGE AND EAVE BARS FOR THE
CANOPY, FROM BACK OF FOLDING PLATFORM. Fig.31
INSTALL THEM ON TOP OF LOADING PLATFORM.
(JUST BELOW THE SIGN). PIN IN PLACE.
INSTALL FABRIC AWNING COVER. (STORED IN BAG BOX)



FIG. 31

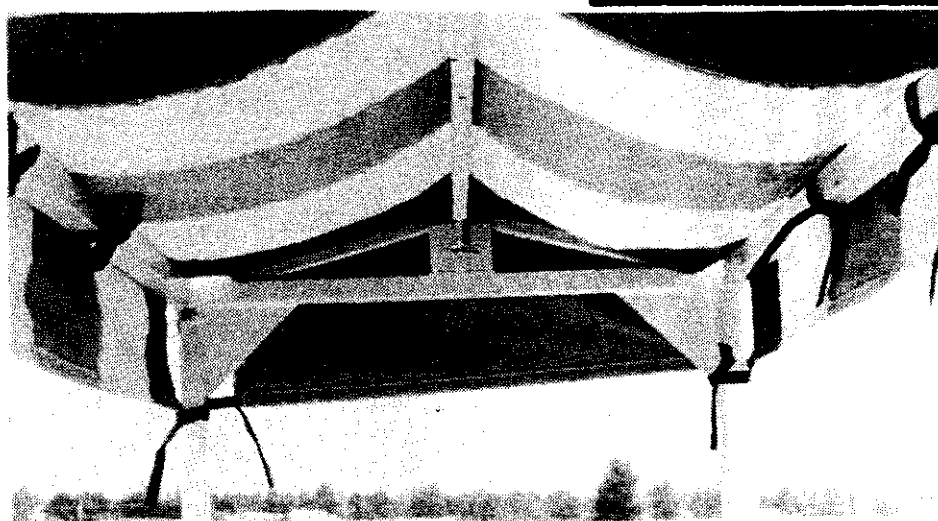


FIG. 32

THEN OPEN HINGED SAFETY
FENCE AND SECURE IN POSITION.

Fig.33



FIG. 33

INSTALL FENCE ACCORDING TO DIAGRAM.

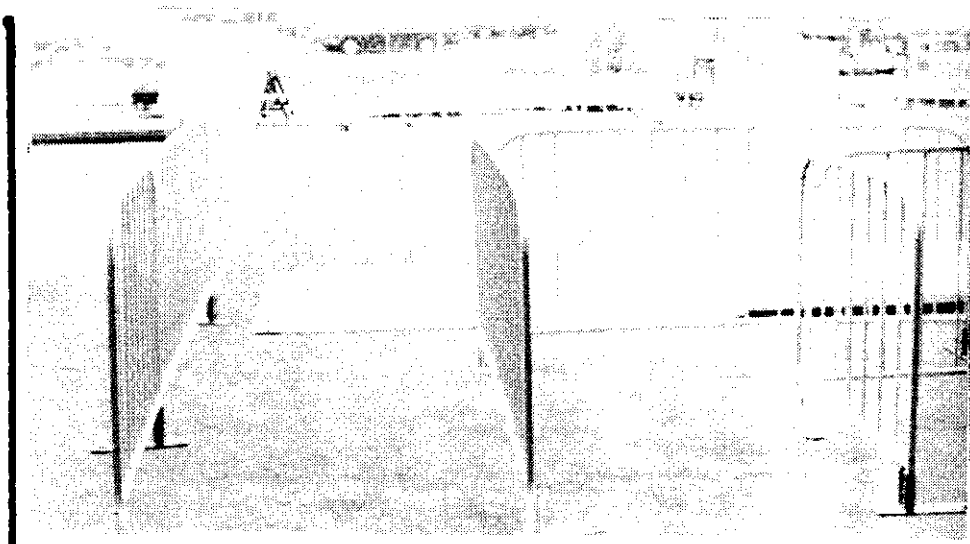


FIG. 34A

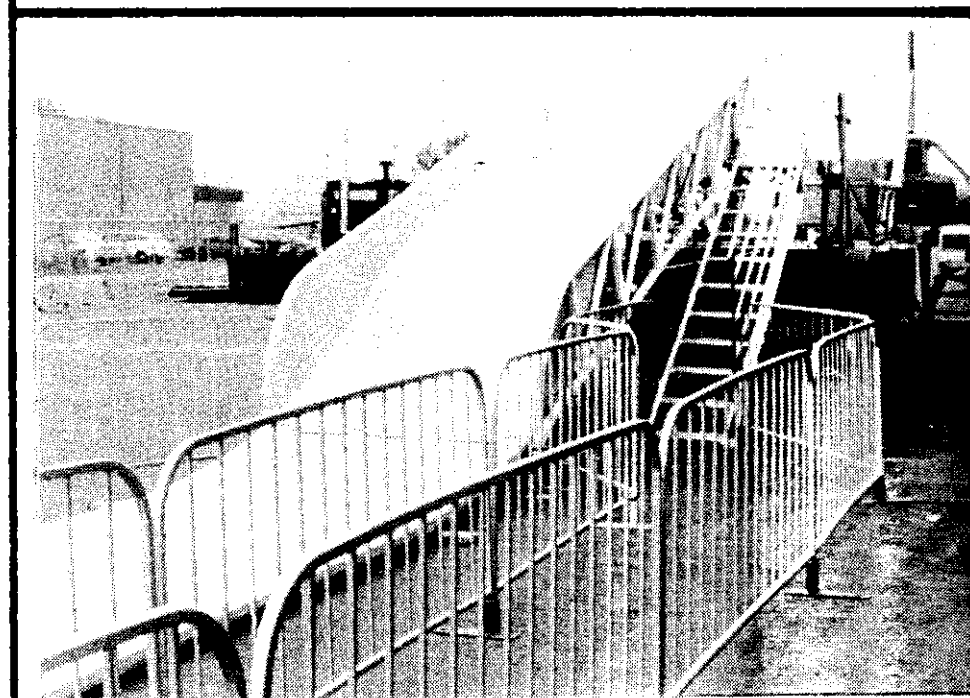


FIG. 34B

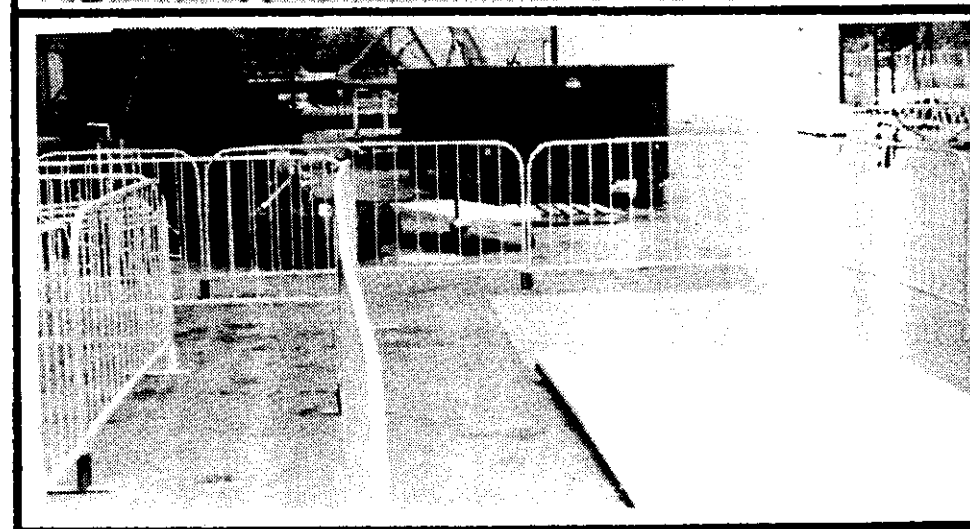


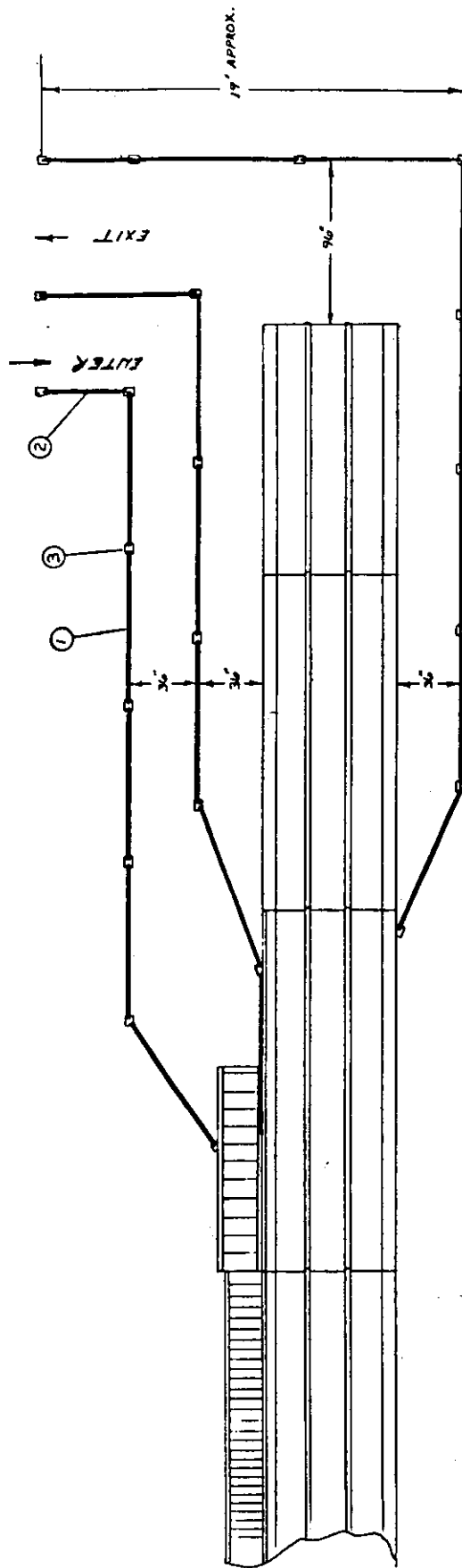
FIG. 34C

Remove burlap bags from bag box. Each rider must ride on a bag in an upright position with their feet in the pocket provided. Rider must hold on to each side of the bag. One rider per land. Do not allow anyone to slide down on his/her stomach, back or backwards.

There should be (2) two operators for the ride, one at the top to assist in loading and one at the bottom to assist exiting, bag recovery and ticket collection.

DO NOT WAX THE SLIDE! When necessary to clean fiberglass, add silicone spray sparingly.

CAUTION: Handrail next to steps must be folded in the DOWN position before slide is lowered. Failure to lower handrail will cause handrail to contact loading platform and could cause damage to the loading platform.



PROJECT NO.	DATE	SCALE	REVISION	DATE	BY
100-1000	8-3-90	1/4" = 1'-0"			
SLIDE FENCE LAYOUT					
NEXT ASSEMBLY					

REV.	DATE	DESCRIPTION	BY
A	8-3-90	FENCE LAYOUT CHANGED FOR SAFETY	

GENERAL MAINTENANCE

A. LUBRICATION SPECIFICATIONS

1. Recommended oil for hydraulic system.
 - a. Chevron—E.P. Hydraulic #32
 - b. Mobil—D.T.E. #24
 - c. Texaco—Rando oil H.C. #150
 - d. Union—A.W. or A.W. #150
 - e. Arco—A.W.-S #150
2. Recommended grease for all Zerk fittings.
 - a. Chevron—Multi-Motive Grease #1
 - b. Mobil—M.P.
 - c. Texaco—Marfax#1
 - d. Union—M.P. Automotive
 - e. Arco—Multi-Motor

B. SLIDE CARE

1. CAUTION: *DO NOT* use wax or polish to make the Slide faster.
2. Wash occasionally with a very mild soap.
 - a. Heel marks can be removed with any good lacquer thinner.
 - b. Note: Do not use any type of abrasive.
3. Occasionally use a spray-on silicone on the sliding surface.

C. BASIC CARE FOR THE HYDRAULIC SYSTEM

1. Check for external leaks.
 - a. Hoses and fittings should be checked regularly for leaks.
 - b. Watch for cracks or wear and replace hoses and fittings when needed.
2. Check the oil reservoir weekly.
 - a. Fluid supply should always be at the specified level.
 - b. When adding oil, be sure to use the correct type.

CAUTION: Running the system with an inadequate oil supply can cause damage to the parts.

D. PLASTIC BUBBLE LIGHTS

Check the inside light bulbs and the inside sockets. The plastic bubble can be opened by removing the bottom screw on the silver ring.

MAINTENANCE CHECK LIST

COMPONENTS

FREQUENCY

Hydraulic oil	Weekly
Hydraulic lift cyclinder	Weekly for leaks
Hydraulic oil tank	Annually
Pins and snap keys	Daily
Steps and Handrails	Daily for condition and keys and pins
Trailer tire	Weekly
Landing gears	Weekly
Main Lead-in wires	Weekly
Electric motor	Monthly
Plugs, Electric boxes and wire	Weekly
Circuit breakers	Monthly

TROUBLESHOOTING GUIDE—ELECTRICAL SYSTEM

CAUTION: Turn off main power source before working on the electrical system.

PUMP MOTOR WILL NOT ROTATE

1. Electric motor burned out.
Check and replace.
2. Check main switch box for 230 volts, single phase.
3. Burned out heater (#44) in stop and start switch box.
4. Check main breaker switch in switch box:
 - a. burned out breaker
 - b. loose wire
 - c. breaker switch turned on
5. Check 20 amp breaker in switch box:
 - a. burned out breaker
 - b. loose wire
 - c. breaker switch on
6. Check connections in generator or main power source.
7. Check for low voltage to the electric motor that would provide insufficient horsepower to turn the pump.
8. Check for defective capacitor in motor.

B. LIGHTS WILL NOT LIGHT

1. Check light bulbs and replace if burned out.
2. Check 20 amp breaker in switch box:
 - a. burned out breaker
 - b. loose wire
 - c. breaker switch on
3. Check for loose wires in receptacle box. (Boxes are mounted on the side of the slide frame.)
4. Check for cut or broken wires.
5. Check if lights are plugged into receptacle box.
6. Check for loose wires in plugs and cords inside the bubble lights.
7. If lights do not flash inside the bubbles, replace flashers.

C. SLIDE HEATER NOT WORKING

1. Check 30 amp breaker in switch box and replace if burned out.
2. Check if the sections are plugged into mating plugs.
3. Check for loose wires in plugs on ends of cords.
4. Check for loose wiring in receptacle boxes.

D. SIGN WILL NOT LIGHT

1. See section B-1, 2, 3, 4.
2. Check for burned out ballast.
3. If lights do not chase, check for loose wiring in flasher timer and replace if inoperative.

TROUBLESHOOTING GUIDE-HYDRAULIC SYSTEM

A. UPPER SLIDE PLATFORM WILL NOT RAISE

1. Incorrect pump rotation.
Check arrow on hydraulic pump.
2. Hydraulic control valve inoperative.
Check relief valve or replace valve.
3. Oil level low in tank.
4. Upper slide section traveling pins not removed.
5. Check for defective pump.
6. Key in motor or pump coupler half could be sheared.
7. Collapsed or restricted hose to cylinder.

B. EXCESSIVE NOISE

1. Collapsed or restricted inlet hose.
2. Wrong oil weight. (See Lubrication Specifications)
3. Water in oil.
Drain oil and replace it.
4. Air in oil.
Check for leaks in suction line.

C. OVERHEATING

1. Relief valve not working properly.
2. Pump unit excessively worn.
Replace pump unit.

D. SLIDE RAM WILL NOT COME DOWN

- | | |
|----------------------------------|--|
| 1. Inoperative control valve. | 4. Collapsed or restricted hose to tank. |
| 2. Flow control shut off. Reset. | 5. Bent cylinder. |
| 3. Slide braces still in place. | |

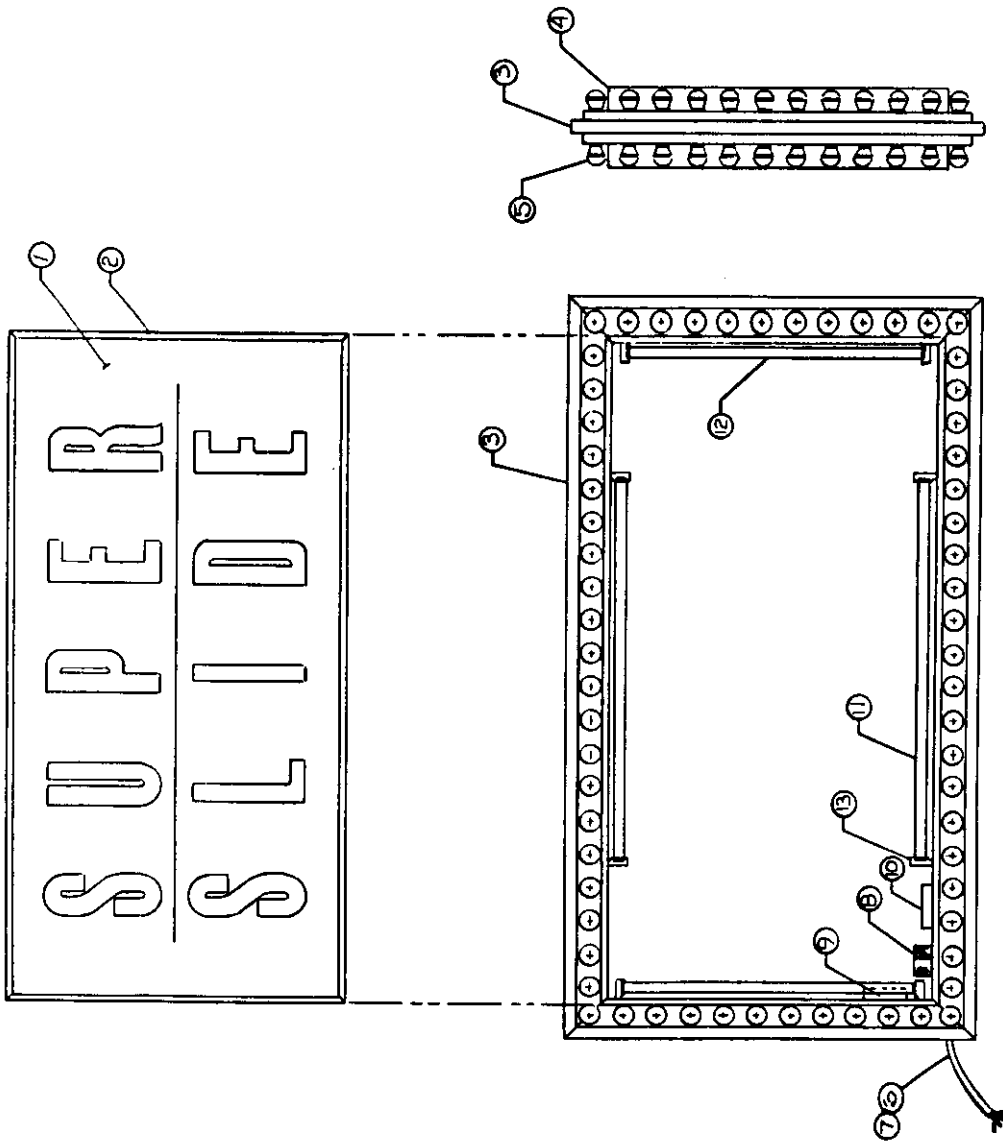
E. CYLINDER RAM LEAKING

- | | |
|-------------------------|----------------------------------|
| 1. Tighten packing nut. | 3. If ram is scored, replace it. |
| 2. Replace packing. | |

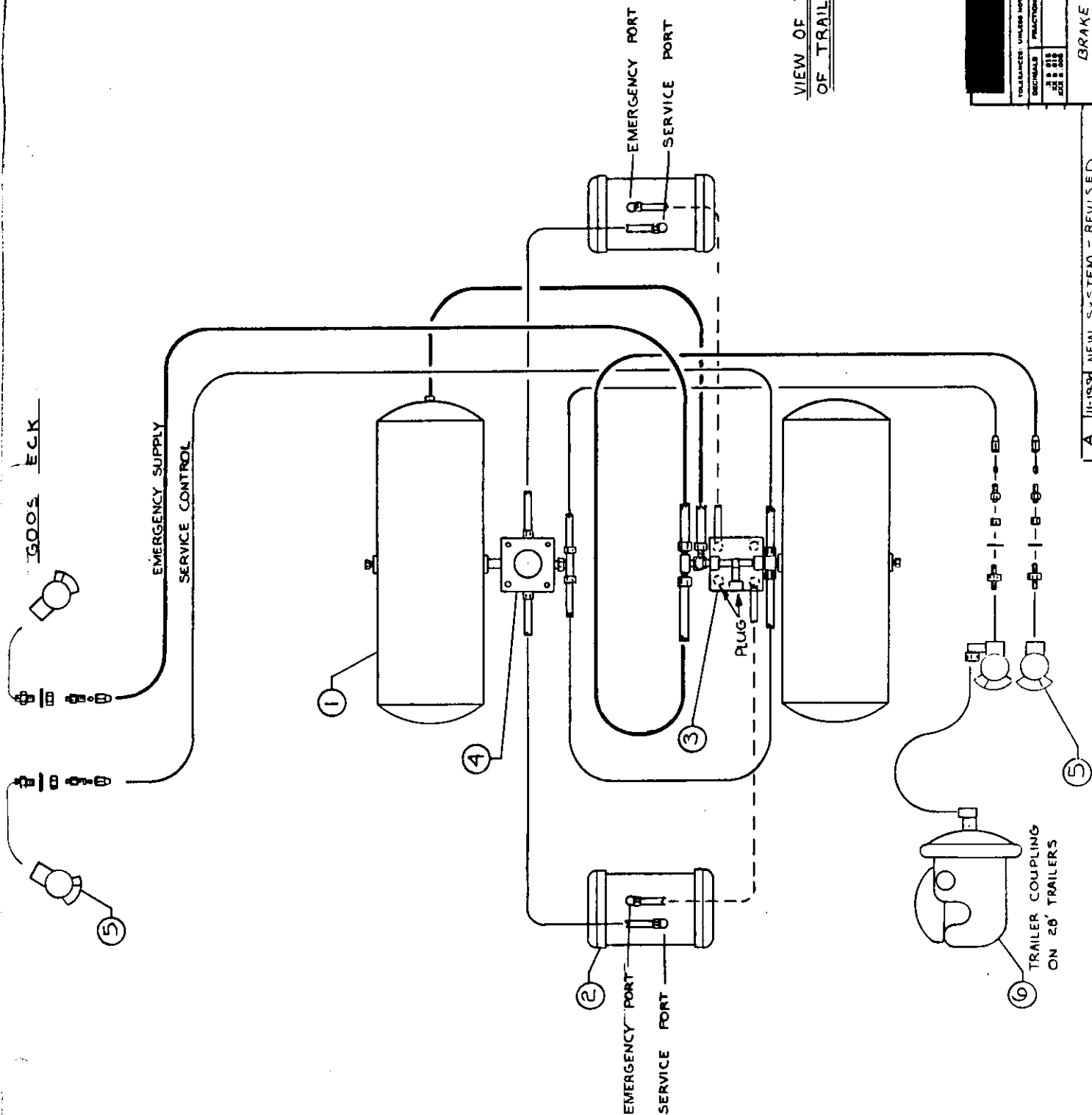
PARTS LIST

INFORMATION REQUIRED FOR SERVICE PARTS ORDERS

1. Ride serial number
2. Dartron Industries, Inc. part number (see following list)
3. Description of part
4. Quantity desired
5. Shipping address and mode of shipping desired.



TITLE BLOCK: SLIDE SIGN		DATE: 8-13-90	SCALE: 1" = 1'-0"
DESIGNED BY: SMT	PROJECT: SL-801	DATE: 8-13-90	SCALE: 1" = 1'-0"
DRAWN BY: SMT		PROJECT: SL-801	DATE: 8-13-90
CHECKED BY: SMT		PROJECT: SL-801	DATE: 8-13-90
APPROVED BY: SMT		PROJECT: SL-801	DATE: 8-13-90
SLIDE SIGN ASSEMBLY (MANUAL DRWG)			
REV. 1		DATE: 8-13-90	DESCRIPTION: SLIDE SIGN ASSEMBLY
REV. 2		DATE: 8-13-90	DESCRIPTION: SLIDE SIGN ASSEMBLY
REV. 3		DATE: 8-13-90	DESCRIPTION: SLIDE SIGN ASSEMBLY
REV. 4		DATE: 8-13-90	DESCRIPTION: SLIDE SIGN ASSEMBLY
REV. 5		DATE: 8-13-90	DESCRIPTION: SLIDE SIGN ASSEMBLY
REV. 6		DATE: 8-13-90	DESCRIPTION: SLIDE SIGN ASSEMBLY
REV. 7		DATE: 8-13-90	DESCRIPTION: SLIDE SIGN ASSEMBLY
REV. 8		DATE: 8-13-90	DESCRIPTION: SLIDE SIGN ASSEMBLY
REV. 9		DATE: 8-13-90	DESCRIPTION: SLIDE SIGN ASSEMBLY
REV. 10		DATE: 8-13-90	DESCRIPTION: SLIDE SIGN ASSEMBLY
REV. 11		DATE: 8-13-90	DESCRIPTION: SLIDE SIGN ASSEMBLY
REV. 12		DATE: 8-13-90	DESCRIPTION: SLIDE SIGN ASSEMBLY
REV. 13		DATE: 8-13-90	DESCRIPTION: SLIDE SIGN ASSEMBLY
REV. 14		DATE: 8-13-90	DESCRIPTION: SLIDE SIGN ASSEMBLY
REV. 15		DATE: 8-13-90	DESCRIPTION: SLIDE SIGN ASSEMBLY
REV. 16		DATE: 8-13-90	DESCRIPTION: SLIDE SIGN ASSEMBLY
REV. 17		DATE: 8-13-90	DESCRIPTION: SLIDE SIGN ASSEMBLY
REV. 18		DATE: 8-13-90	DESCRIPTION: SLIDE SIGN ASSEMBLY
REV. 19		DATE: 8-13-90	DESCRIPTION: SLIDE SIGN ASSEMBLY
REV. 20		DATE: 8-13-90	DESCRIPTION: SLIDE SIGN ASSEMBLY

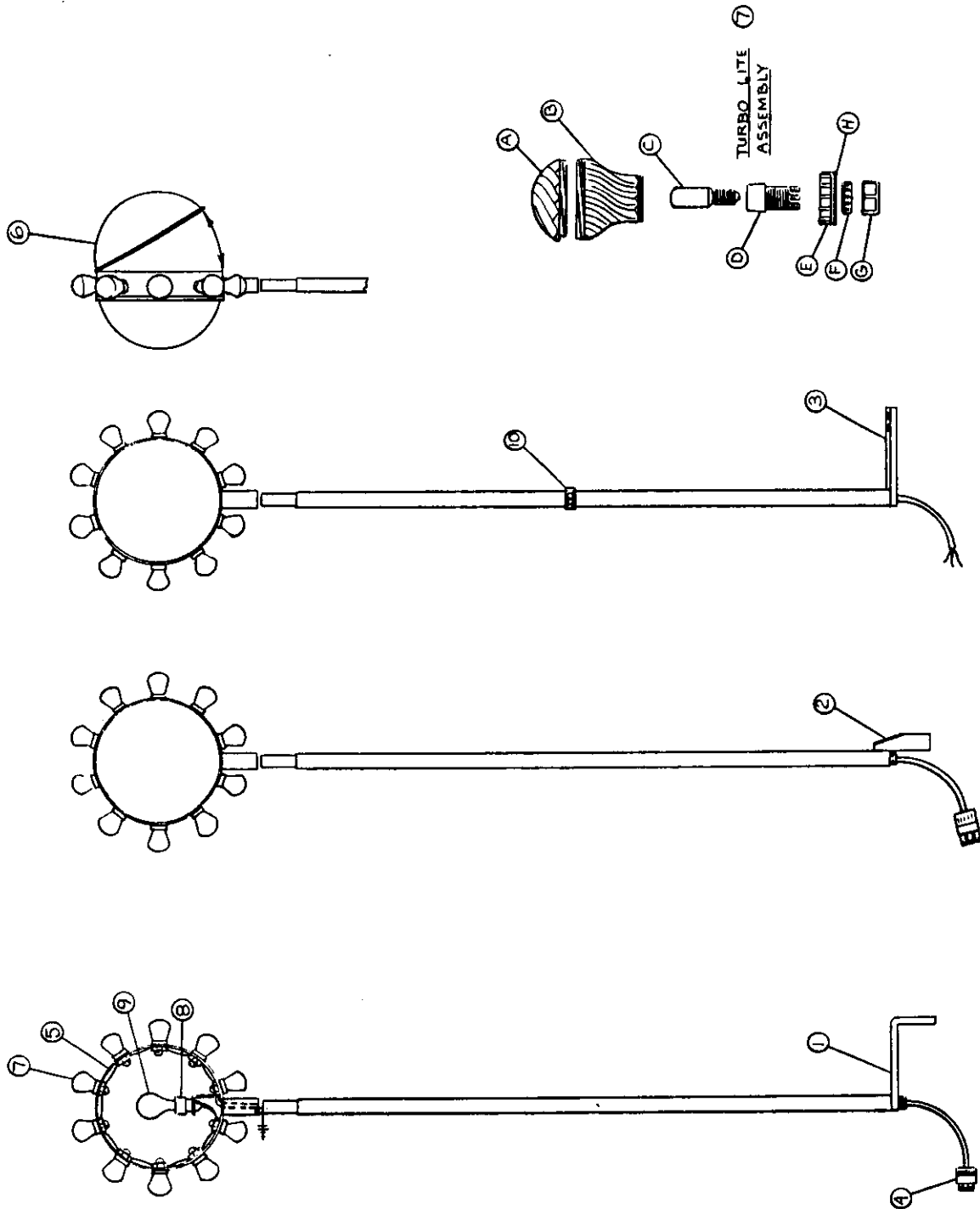


VOLUNTARILY UNLESS NOTED		DRAWN BY: SWAJ	
REVISIONS	DATE	DATE	SCALE
1	11-19-90	11-19-90	NONE
BRAKE SYSTEM - SINGLE AXLE WITHOUT ANTI-SKEW		REVISION A	
PART NUMBER		STO-329	

A 11-19-90 NEW SYSTEM - REVISED

DESCRIPTION

REVISED



DESIGNED BY	DATE	SCALE	REVISIONS
SWJ	8-14-90	1 1/2" = 1'-0"	
REVISIONS	DATE	BY	DESCRIPTION
1	8-14-90	SWJ	1.0
2	8-14-90	SWJ	2.0
3	8-14-90	SWJ	3.0
4	8-14-90	SWJ	4.0
5	8-14-90	SWJ	5.0
6	8-14-90	SWJ	6.0
7	8-14-90	SWJ	7.0
8	8-14-90	SWJ	8.0
9	8-14-90	SWJ	9.0
10	8-14-90	SWJ	10.0
11	8-14-90	SWJ	11.0
12	8-14-90	SWJ	12.0
13	8-14-90	SWJ	13.0
14	8-14-90	SWJ	14.0
15	8-14-90	SWJ	15.0
16	8-14-90	SWJ	16.0
17	8-14-90	SWJ	17.0
18	8-14-90	SWJ	18.0
19	8-14-90	SWJ	19.0
20	8-14-90	SWJ	20.0
21	8-14-90	SWJ	21.0
22	8-14-90	SWJ	22.0
23	8-14-90	SWJ	23.0
24	8-14-90	SWJ	24.0
25	8-14-90	SWJ	25.0
26	8-14-90	SWJ	26.0
27	8-14-90	SWJ	27.0
28	8-14-90	SWJ	28.0
29	8-14-90	SWJ	29.0
30	8-14-90	SWJ	30.0
31	8-14-90	SWJ	31.0
32	8-14-90	SWJ	32.0
33	8-14-90	SWJ	33.0
34	8-14-90	SWJ	34.0
35	8-14-90	SWJ	35.0
36	8-14-90	SWJ	36.0
37	8-14-90	SWJ	37.0
38	8-14-90	SWJ	38.0
39	8-14-90	SWJ	39.0
40	8-14-90	SWJ	40.0
41	8-14-90	SWJ	41.0
42	8-14-90	SWJ	42.0
43	8-14-90	SWJ	43.0
44	8-14-90	SWJ	44.0
45	8-14-90	SWJ	45.0
46	8-14-90	SWJ	46.0
47	8-14-90	SWJ	47.0
48	8-14-90	SWJ	48.0
49	8-14-90	SWJ	49.0
50	8-14-90	SWJ	50.0
51	8-14-90	SWJ	51.0
52	8-14-90	SWJ	52.0
53	8-14-90	SWJ	53.0
54	8-14-90	SWJ	54.0
55	8-14-90	SWJ	55.0
56	8-14-90	SWJ	56.0
57	8-14-90	SWJ	57.0
58	8-14-90	SWJ	58.0
59	8-14-90	SWJ	59.0
60	8-14-90	SWJ	60.0
61	8-14-90	SWJ	61.0
62	8-14-90	SWJ	62.0
63	8-14-90	SWJ	63.0
64	8-14-90	SWJ	64.0
65	8-14-90	SWJ	65.0
66	8-14-90	SWJ	66.0
67	8-14-90	SWJ	67.0
68	8-14-90	SWJ	68.0
69	8-14-90	SWJ	69.0
70	8-14-90	SWJ	70.0
71	8-14-90	SWJ	71.0
72	8-14-90	SWJ	72.0
73	8-14-90	SWJ	73.0
74	8-14-90	SWJ	74.0
75	8-14-90	SWJ	75.0
76	8-14-90	SWJ	76.0
77	8-14-90	SWJ	77.0
78	8-14-90	SWJ	78.0
79	8-14-90	SWJ	79.0
80	8-14-90	SWJ	80.0
81	8-14-90	SWJ	81.0
82	8-14-90	SWJ	82.0
83	8-14-90	SWJ	83.0
84	8-14-90	SWJ	84.0
85	8-14-90	SWJ	85.0
86	8-14-90	SWJ	86.0
87	8-14-90	SWJ	87.0
88	8-14-90	SWJ	88.0
89	8-14-90	SWJ	89.0
90	8-14-90	SWJ	90.0
91	8-14-90	SWJ	91.0
92	8-14-90	SWJ	92.0
93	8-14-90	SWJ	93.0
94	8-14-90	SWJ	94.0
95	8-14-90	SWJ	95.0
96	8-14-90	SWJ	96.0
97	8-14-90	SWJ	97.0
98	8-14-90	SWJ	98.0
99	8-14-90	SWJ	99.0
100	8-14-90	SWJ	100.0

PORTABLE SLIDE (REV. "C")

Page 1 of 6

Dwg.No. SL-505

Part Key	Part Number	QTY	Size	Rev	Description	Remarks
1	1 SL 700				MAIN FRAME	
2	4 SL 701				FRAME SUPPORT (Possum Belly)	
3	8 SL 702-6				PIN (Possum Belly)	
4	28 STD 102-3				SNAP KEY	
5	6 SL 703				DOOR (Possum Belly)	
6						
7						
8						
9	2 SL28 702				LOADING BEAM	
10						
11						
12						
13						
14						
15	13 STD 102-2				SNAP KEY	
16	2 SL 708-1				SLIDE FRAME SUPPORT	
17	2 SL 708-8				TURNBUCKLE	
18	12 SL 702-5				PIN	
19	36 STD 102-4				SNAP KEY	

MATERIAL BILLPage 2 of 6Dwg. Title PORTABLE SLIDE (REV. "C")Dwg.No. SL-505

Key	QTY	PART NUMBER	DESCRIPTION	REMARKS
20	4 STD	106	TIRE-TUBE TYPE - 10 PLY 9.00x20	
21				
22				
23	1 SL	741	AXLE AND SUSPENSION SYSTEM	
A	1 STD	1178	SUSPENSION COMMON HARDWARE	
B	1 STD	829	BRAKING SYSTEM	
			(LANDING GEAR AND OUTRIGGERS)	
24				
25				
26				
27				
A				
28				
29				
30	1 STD	337-53R	OUTRIGGER (RIGHT)	
A	1 STD	337-53L	OUTRIGGER (LEFT)	
31				
32				
33	2 STD	337-71	TURNBUCKLE	
34	4 SL	702-5	PIN	
35				
36	2 STD	108	TWO SPEED LANDING GEAR	FRONT
37	2 STD	109	SINGLE SPEED LANDING GEAR	REAR

MATERIAL BILL

Page 3 of 6

Dwg. Title PORTABLE SLIDE (REV. "C")

Dwg. No. SL-505

Key	Part No.	Part Number	Rev	Description	Remarks
38	1	SL 796		SLIDE PLATFORM	
39	2	SL 711-8		PLATFORM SUPPORT BRACE	
40					
41					
42					
43	1	SL 714		PLATFORM LOADING HANDRAIL	
44					
45					
A					
46					
47		STD 102-5		SNAP KEY	
48					
49	1	SL 718		CANOPY	
50					

MATERIAL BILL

Page 4 of 6

Dwg. Title **PORTABLE SLIDE (REV. "C")**

Dwg. No. SL-505

Key	Q'ty	Part Number	Unit	Description	Remarks
51	1	SL 796		CROSS SUPPORT BAR W/PINS	
A	1	SL 796		CROSS SUPPORT BAR	
52					
53					
54					
55					
56					
57					
58	1	SL 722		SLIDE FRAME	
59	1	SL 723-1		FIBERGLASS SLIDE SECTION 1 - 9 FT. (UPPER)	
60	1	SL 723-2		FIBERGLASS SLIDE SECTION 2 - 18 FT.	
61	1	SL 723-3		FIBERGLASS SLIDE SECTION 3 - 18 FT.	
62	1	SL 724		SLIDE FRAME REMOVABLE SECTION	
63	1	SL 723-4		FIBERGLASS SLIDE SECTION 4 - 18 FT.	
64	1	SL 725		LOWER CURVED SECTION	
65	1	SL 723-5		FIBERGLASS SLIDE SECTION 5 - 16 FT.	
66					
67					
68	1	SL 726		TAIL SECTION	
69	1	SL 723-6		FIBERGLASS SLIDE SECTION 6 - 12 FT.	

MATERIAL BILL

Page 5 of 6

Dwg. Title PORTABLE SLIDE (REV. "C")

Dwg.No. SL-505

Key	Part Number	Description	Remarks
		(FENCING, STEPS AND MISCELLANEOUS)	
70 1	STD 129	LONG OUTSIDE FENCE SECTION	
71 2	STD 130	SHORT OUTSIDE FENCE SECTION (GATE ENTRANCE)	
72	STD 131	FENCE BASE	
73 1	SL 730	SLIDE BAG BOX	
75 1	SL 732-20L	STEP - LEFT (ALSO USED FOR STEPLADDER)	
A 1	SL 732-20R	STEP - RIGHT (ALSO USED FOR STEPLADDER)	
76 2	SL 702-2	PIN	
77			
78 1	SL 733	HANDRAIL	
79 2	H 734-1	SUPPORT LEG	
80			
81 2	SL 732-21	LEG (ALSO USED FOR STEPLADDER)	
82 4	SL 732-14	LEG SUPPORT BRACE	
83 9	SL 702-8	LEG SUPPORT BRACE PIN	
84			
85 2	SL 734-2	SUPPORT LEG	
86			
87			
88			
89			

MATERIAL BILLDwg. Title PORTABLE SLIDE (REV. "C")Page 6 of 6Dwg.No. SL-505

Key	QTY	PART NUMBER	REV	DESCRIPTION	REMARKS
90	50	SL 787		SLIDE BAG	
91	1	SL 788		SAFETY MAT	
92					
93	20	SL 765		WING NUT	
94					
95					
96					
97					
98	2	STD		LANDING GEAR CRANK HANDLE.	
99					
100					
101					
102					
103					
104					
105				TRAILER LIGHTS	
106					
107					
108					
109					
110					