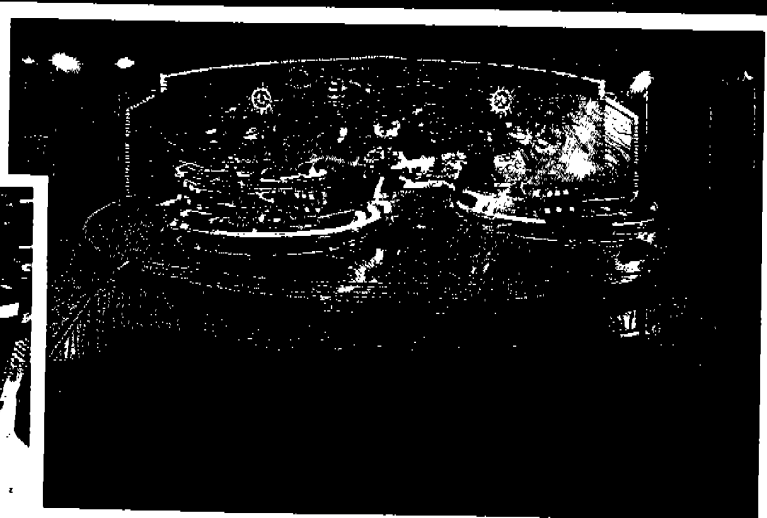
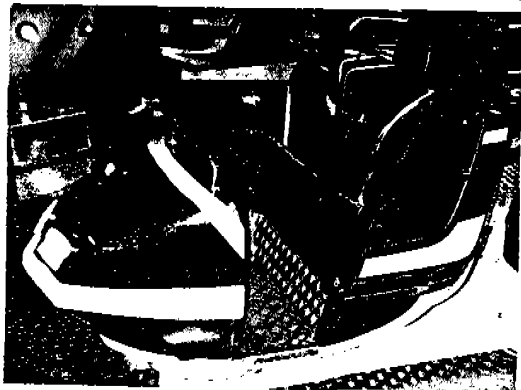
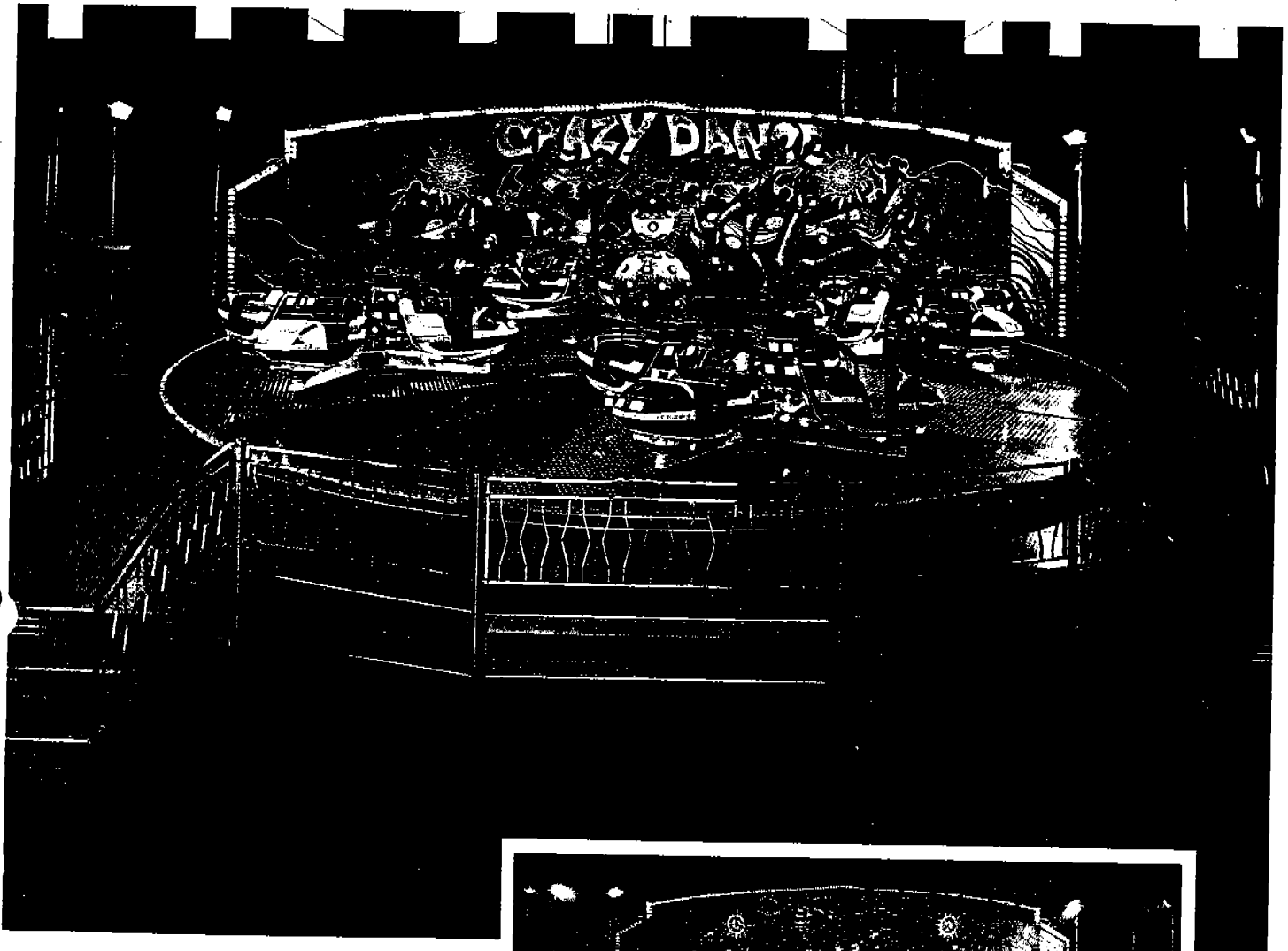


Exsaco Corporat

"Supplying New and Innovative Equipment to

P.O. Drawer 328

MFG: FABBRI, s.r.l.
NAME: CRAZY DANCE
TYPE: NON-KIDDIE



Equipped with **TURBOLITE**



Worldwide Supplier to the Amusement Industry



Exsaco Corporation

"CRAZY DANCE" SPECIFICATIONS

Capacity

Number of Cars	16
Max. Number Passengers/Car	2
Max. Total Number Passengers	32
Loading	All Cars Simultaneously
Capacity	900 Per Hour

Performance

Direction of Travel	Clockwise/Counterclockwise
Ride Speed	12 RPM Platform 20 RPM Satellites
Operation	Manual

Motor and Drive

Motor Type	Direct Current
Horse Power	50 HP Center 12 HP Satellites
Drive	Electronically Controlled DC Motor

Lighting

Scenery	400 Turbolites
Vehicles & Center	12 VDC Quartz
Platform	8-1500 W Quartz

Power Requirements

Total	90 kw
Motor	72 kw
Lighting	18 kw
Voltage	220V 60 Cycle
Amerage	250 Approximately

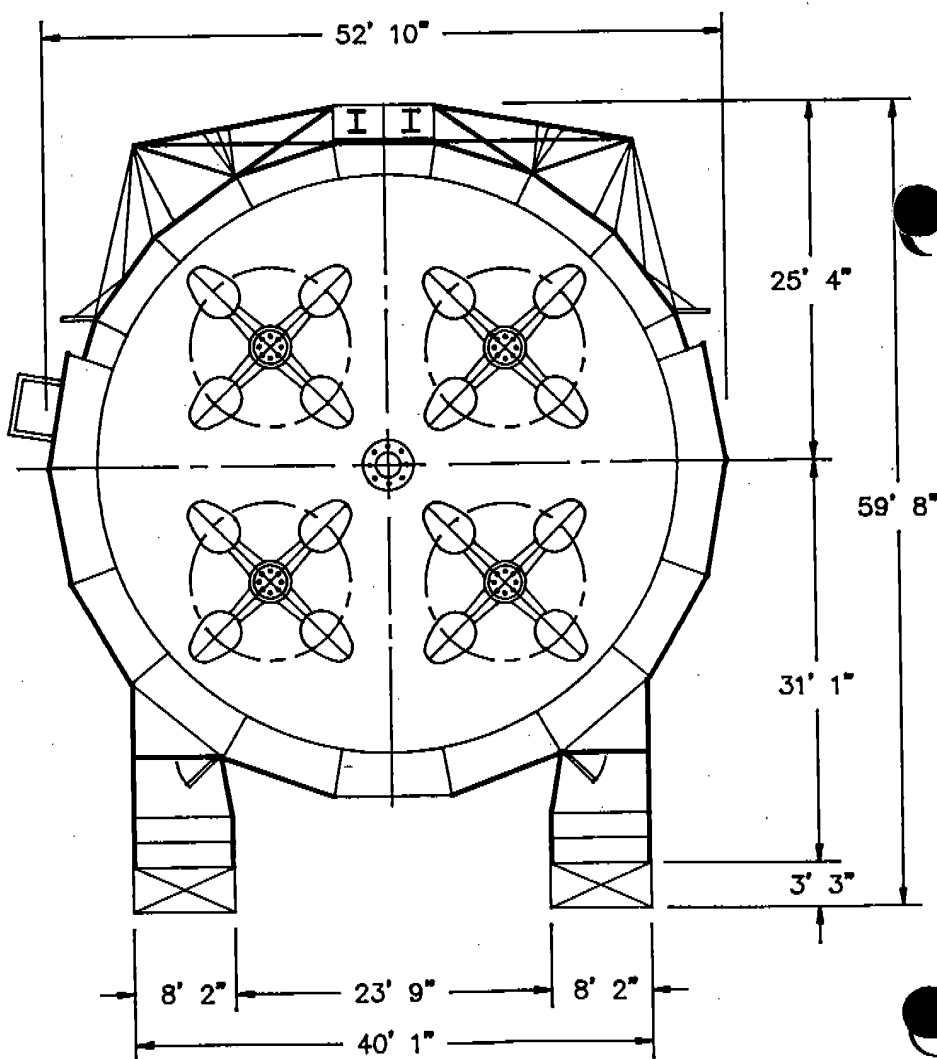
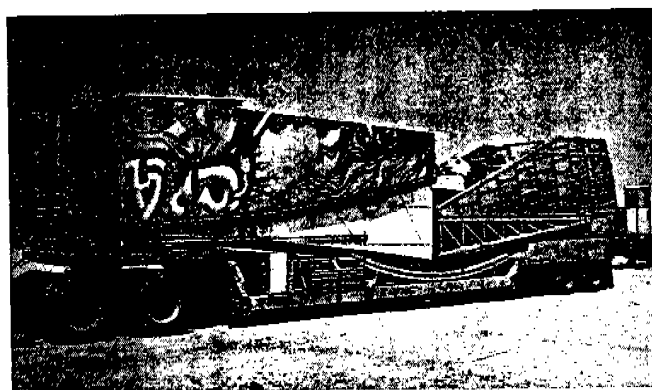
Trailer

Height	13'2"
Width	8'6"
Length	48'
Total weight (approximately)	67,000 lbs.
Rear axle weight	34,000 lbs.
Kingpin weight	33,000 lbs.
Tire size	8.25.15

Operating Dimensions

Width (No Clearance)	52'10"
Depth (No Clearance)	59'8"
Height (No Clearance)	23'4"

This ride is illuminated with Turbolite™, a durable and cost effective solution to incandescent lighting. For more information contact Exsaco Corporation, P.O. Drawer 328, One North Santa Fe Street, Alvarado, TX 76009. FAX (817) 783-3358, Telex 730300.



MANUFACTURED BY **Fabbri**

These specifications subject to change without notice.



MANUFACTURERS OF AMUSEMENT RIDES

45032 BERGANTINO (Rovigo) Italy
Via Giovecca, 74 - Tel. 0425 / 87420 - 87142

M/710794 - C.C.I.A.A. RO N. 90591 - TRIB. RO REG. SOC. N. 4028
C. F. e P. IVA 00724000294

TELEX 434839 SPARCO I - TELEFAX 0425-878113

CRAZY DANCE OPERATION AND FUNCTION

The Crazy Dance amusement ride is made of a large rotating disc shaped platform driven by an electronically controlled variable speed DC motor. Motion is achieved by a ring and pinion gear system driven through a right angle gear box. Located in four (4) independent positions midway and equally distributed in four (4) quarters of the main platform are satellite turntables. Each satellite has four (4) equally spaced short sweeps, which at the end are attached one, two (2) passenger vehicle fixed on an offset spindle allowing the vehicle 360° rotation. These satellites are driven in the same way as the larger turntable. The ride functions as follows: the speed of the platform and that of the satellites is controlled completely by the operator through a potentiometer operating the DC power supply. As the speed of the platform is increased, the operator can rotate the satellites in the opposite direction. There is an electric lock out to prevent both the platform and satellite rotating in the same direction. The top operating speed is 12 rpm platform, 20 rpm satellite. The vehicle will spin and move in and out of platform creating stall and speed runs during the ride.

I. CONTROL PANEL

- A. Emergency Button - This button will automatically stop power to DC motors and bring the ride to a quick controlled stop.
- B. Brake Switch - This switch sets breaker on each vehicle and platform.
- C. Forward-Reverse Switch - This switch changes the direction of rotation of both platform and satellites. (Note: this ride has an electrical lock out to prevent the platform and satellite from rotating in the same direction.)
- D. Platform Speed Control - This dial controls/regulates the speed in both forward and reverse directions.
- E. Satellite Speed Control - This dial controls regulates the speed in both forward and reverse directions.
- F. Smoke Machine - This switch activates the smoke machine to expel smoke. Smoke is expelled as long as switch is on.
- G. Strobe, Pattern Light - This switch turns on either strobe light or pattern light which ever the ride is equipped with.
- H. Platform Quartz - These two (2) switches control the platform and walkway quartz lights used for loading and unloading.
- I. Scenery Lights - This switch turns on scenery lights and sign, if equipped.

5. Monitor Ride during operation. If any passengers are not riding in a safe manner, stop ride immediately and warn passengers. If problem persists, ask passengers to leave ride.
6. When ride is over, bring ride to a complete stop, apply brakes, for platform and individual vehicles. Do not allow passengers to exit until brake is set and vehicles have stopped moving. Assist passengers in unloading and allow new passengers to enter ride.

D. Safety and Security Systems

1. Passenger Restraint - Each vehicle is equipped with a lap bar. This lap bar is designed to lift up and over passengers to provide easy access and exit of vehicle. The lap bar is secured with a plunger and spring latch that automatically latches when bar is closed. The lap bar is released by a manual lever located on the lap bar.
2. Safety Padding - The vehicle is equipped with a head pad for each seat along with side bar padding.
3. Emergency or Power Failure Procedure - In the case of an emergency and the ride has to be stopped midway during operation, immediately press the red emergency button. This will bring the ride to a quick controlled stop. Evacuate all riders as soon as possible and investigate the emergency.

In the case of a power failure, the ride will come to a gradual stop. When completely stopped, inform passengers that each vehicle will have to be unloaded individually with the assistance of an operator. This is due to the lack of operation of vehicle and platform brakes. When ride has stopped, hold vehicle secure and assist passengers out of vehicle and escort them off the platform. **This should be done from the top or back of ride first.** This will keep the table rotation down to a minimum. After all passengers are evacuated, shut down all circuit breakers to the ride. When power is returned and it has been checked to ensure proper connection and voltage can then be returned to operation.

NON-DESTRUCTIVE TESTING AND SAFETY MODIFICATIONS
POLICY FOR FARFABBRI, S.R.L.

All FarFabbri manufactured amusement rides are designed to the highest degree of safety and quality. Indepth engineering and design analysis has been incorporated into all equipment produced. FarFabbri, s.r.l., therefore, requires no scheduled testing by non-destructive means for the engineered life of the components, unless listed below and issued to customer in the form of a service or safety bulletin.

It should also be understood that this policy is based on the operator/owner exercising proper maintenance and care procedures of all components according to the manufacturers' specifications.

In the event that a fault or potential safety problem is discovered through our own testing or field experience requiring an annual test or modification, information concerning these tests or modifications will be made available immediately to the owner of the equipment.

Below are listed all current safety service bulletins or equipment modification bulletins.

<u>BULLETIN NUMBER</u>	<u>RIDE</u>	<u>CONCERNING</u>	<u>EFFECTIVE DATE</u>
F010	Crazy Dance	Spindle Nuts	May, 1988

FarFabbri, s.r.l.



FARFABRI

S.R.L.

MANUFACTURERS OF AMUSEMENT RIDES

45032 BERGANTINO (Rovigo) Italy
Via Giovecca, 74 - Tel. 0425 / 87420 - 87142
M710724 - CCIAA RO N. 30591 - TRIB. RO REG. SOC. N. 4028
C.F. e P. IVA 09724000294
TELEX 434839 SPARCO I - TELEFAX 0425-878113

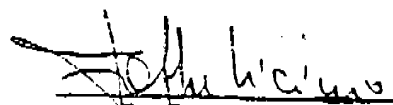
SERVICE BULLETIN

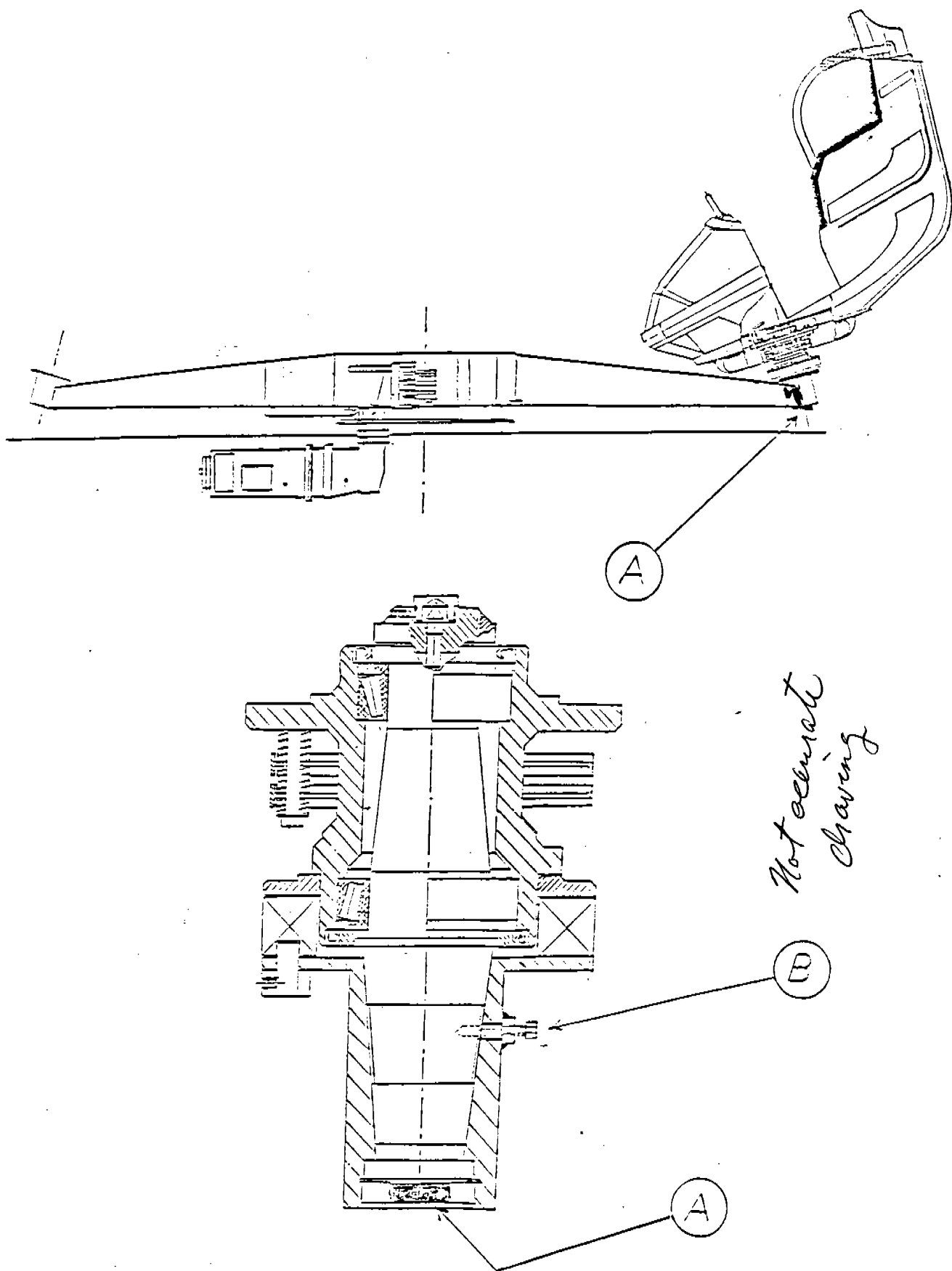
RIDE: CRAZY DANCE DATE: DECEMBER 10, 1990
SUBJECT: VEHICLE SPINDLE BOLTS BULLETIN NUMBER: FC001

It has been determined through investigation that the bolts used to lock the vehicle tapered spindle into its socket on the end of the satellite sweep can loosen over a period of time. The following modification, change in components and maintenance change are now required by the manufacturer, FarFabri, s.r.l.

1. Existing bolts x lock washers (24 mm x 80 mm x grade 8.8) are to be replaced with 24 mm x 80 mm x grade 10.9 and torqued in place to 700 nm (515 ft. lbs) (refer to Figure A).
2. Install tapered spindle lock bolts (refer to Figure B).
3. Change maintenance procedure to include checking the torque of the bolts on a monthly basis.
4. Replace bolts on an annual basis.

Kits are available for lock bolt and replacement bolts free of charge and can be ordered through Exsaco Corporation, One North Santa Fe Street, Alvarado, Texas 76009, 817-783-2265.


FarFabri, s.r.l.





FARFABBRI S.R.L.

MANUFACTURERS OF AMUSEMENT RIDES

45032 BERGANTINO (Rovigo) Italy
Via Giovecca, 74 - Tel. 0425 / 87420 - 87142

M/710794 - C.C.I.A.A. RO N. 90591 - TRIB. RO REG. SOC. N. 4028

C. F. + P. IVA 0072400 029 4

TELEX 434839 SPARCO I - TELEFAX 0425-878113

SERVICE BULLETIN

RIDE: CRAZY DANCE

BULLETIN NUMBER: F010

SUBJECT: VEHICLE AXLE NUTS

SERIAL NUMBERS: ALL

It has come to the attention of FarFabbri, s.r.l. that there have been instances where vehicle axle nuts has become loose during operation. To prevent this from happening, FarFabbri, s.r.l. recommends the following:

1. Inspect all nuts on car axles every spot or once per week. See accompanying drawing - Point A.
2. Tighten all nuts to 540 N/mt. (400 ft. lbs.).
3. If the situation arises where the nuts are becoming loose more frequently, please contact the manufacturer.

5002 BERGANTINO (Rovigo) Italy
Via Jvecc3, 74 - Tel. 0425 / 87420 - 87142
//10794 CEEA A 20 N. 30591 TRIB. RO REG. SOC. N. 4028
C. e P. IVA 00724000294
TELEX 434803 SPARCO I - TELEFAX 0425-873113

SERVICE BULLETIN

August 28, 1990

RIDE: Crazy Dance

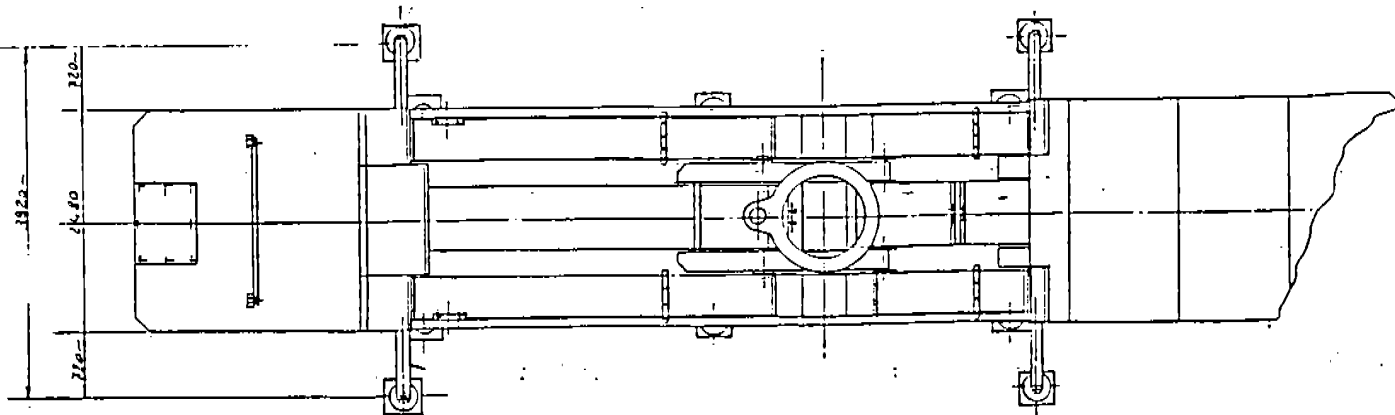
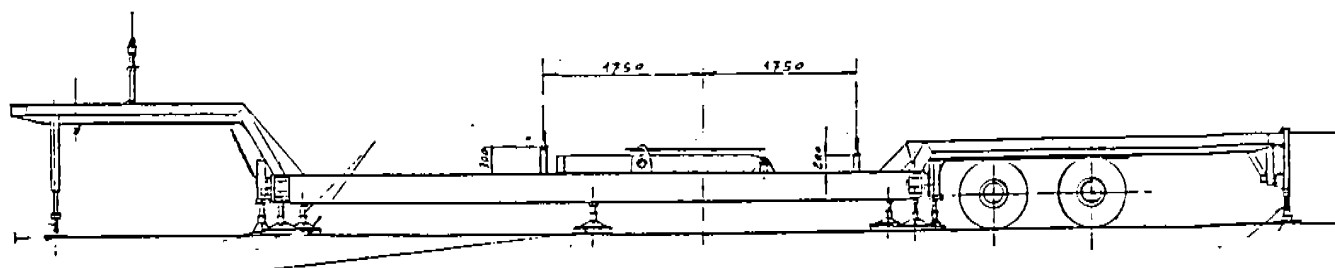
BULLETIN NUMBER: F012 See F010

SUBJECT: Vehicle Axle Nuts

SERIAL NUMBER: All

It has come to the attention of FarFabbri, s.r.l. that there have been instances where vehicle axle nuts have become loose during operation. To prevent this from happening, FarFabbri, s.r.l. recommends the following:

1. Inspect all nuts on car axles every spot or once per week. See accompanying drawing - point A.
2. Tighten all nuts to 700 N/mt. (515 foot pounds).
3. If the situation arises where the nuts are becoming loose more frequently, please contact the manufacturer.



RIDE NAME: CRAZY DANCE

Manufacturer:

FarFabbri, s.r.l.
Via Giovecca, 74
45032 Bergantino (Rovigo)
Italy

U.S. Representative:

Exsaco Corporation
One North Santa Fe Street
P.O. Drawer 328
Alvarado, Texas 76009 USA

Date of Inception and Completion of First Unit: 1986
Number of Rides Operating in USA: 3
Number of Rides Operating Worldwide: 13

OPERATING SPECIFICATIONS **DIMENSIONS (APPROXIMATELY)**

Static: (No Clearance)

Height 23'4" (7.1m)
Width 52'10" (16.1m)
Depth 59'8" (18.19m)

Dynamic:

Height 23'4" (7.1m)
Width 52'10" (16.1m)
Depth 59'8" (18.19m)

Total Weight Static: 62,322 Pounds (28,270 kg) approximately
Ride Speed: 12 RPM Center 20 RPM Vehicles
Passenger Capacity: 32 Adults or 32 Children
Number of Vehicles: 16
Estimated Capacity/Hour: 900

OPERATING RESTRICTIONS

Passenger Height Restriction: 48"
Passenger Age Restriction Unless Accompanied by Adult: 7 Years
Recommended Ride Duration: 1.5 to 2 Minutes
Passenger Load Balancing Requirements: Each satellite and platform
Maximum Wind Speed for Operation: N/A
Maximum/Minimum Temperature for Operation: Not recommended under 32° F unless gearbox is warmed

ELECTRICAL REQUIREMENTS

Voltage: 235 maximum 215 minimum
Type: 3 phase, 60 cycle, N.Grnd.
Maximum Power: 80 kw 225 amps



FARFABRI S.R.L.

MANUFACTURERS OF AMUSEMENT RIDES

45032 BERGANTINO (Rovigo) Italy
Via Giovecca, 74 - Tel. 0425 / 87420 - 87142

M/710794 - C.C.I.A.A. PD N. 20591 - TRIB. RO REG. SOC. N. 4028

C. F. A. P. IVA 00724000294

TELEX 434839 SPARCO I - TELEFAX 0425-873113

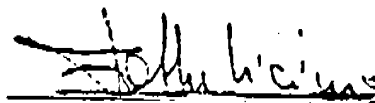
SERVICE BULLETIN

RIDE: CRAZY DANCE DATE: DECEMBER 10, 1990
SUBJECT: DETACHABLE VEHICLE BULLETIN NUMBER: FC002
SWEEP HOOKS

may part.

It has been determined by FarFabri, s.r.l. of the necessity to inspect and test by approved non-destructive testing procedures the sweep hooks and welding located in the inside end of the detachable vehicle sweeps (refer to Point A). This inspection must be done on an annual basis. If cracks are detected, consult the factory for proper repair procedures.

Annual testing of this hook weldment can be waved if a new secondary bolting weldment is installed. (refer to Point B). Kits are available through Exsaco Corporation, One North Santa Fe Street, Alvarado, Texas 76009.


FarFabri, s.r.l.

C R A Z Y

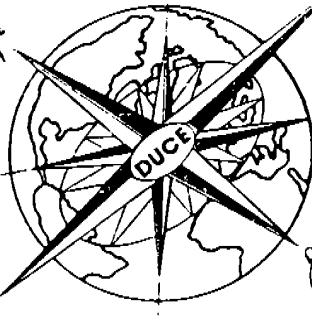
D A N C E

A M U S E M E N T

R I D E

O P E R A T I O N

M A N U A L



Exsaco Corporation

P.O. Drawer 328 • One North Santa Fe Street • Alvarado, Texas 76009
Telephone: (817) 783-2265 • Telex: 730300



FARFABBRI S.R.L.

Pag. 1

MANUFACTURERS OF AMUSEMENT ES

45032 BERGANTINO (Rovigo) Italy
Via Giovecca, 74 - Tel. 0425 / 87420 - 87142

M/710794 - C.C.L.A.A. RO N. 90591 - TRIB. RO REG. SOC. N. 4028
C.F. e P. IVA 0072400 029 4

TELEX 434839 SPARCO I - TELEFAX 0425-878113

BERGANTINO

NS. RIF.:

VS. RIF.:

OGGETTO:

SPEC COMPANY

Spettabile ditta

.....

.....

.....

(AMUSEMENT RIDE) Giostra " CRAZY DANCE "

(OUR MODEL) Nostro modello 13.000.

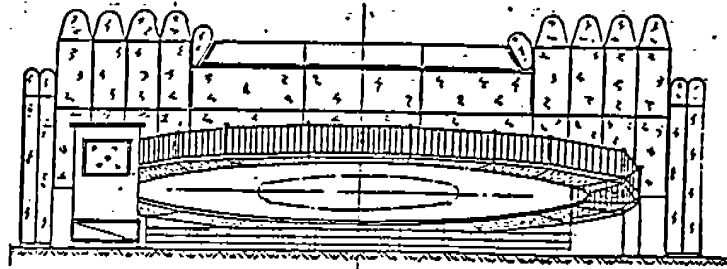
N° (YEAR) ANNO

Bergantino

FAR FABBRI s.r.l.
Costruzione Spettacoli Viaggianti
Via Giovecca, 74 - Tel. 0425 / 87142
45032 BERGANTINO (RO)
C.Fisc. e P. IVA: 0072400 029 4

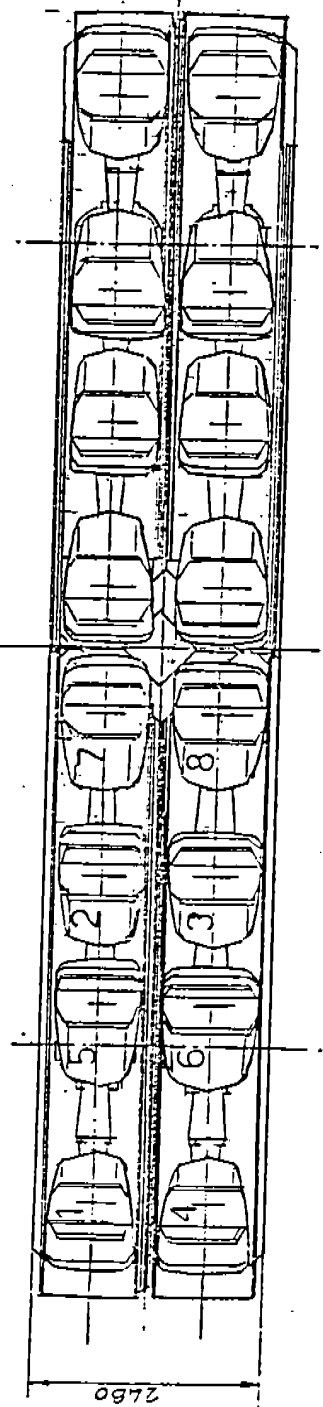
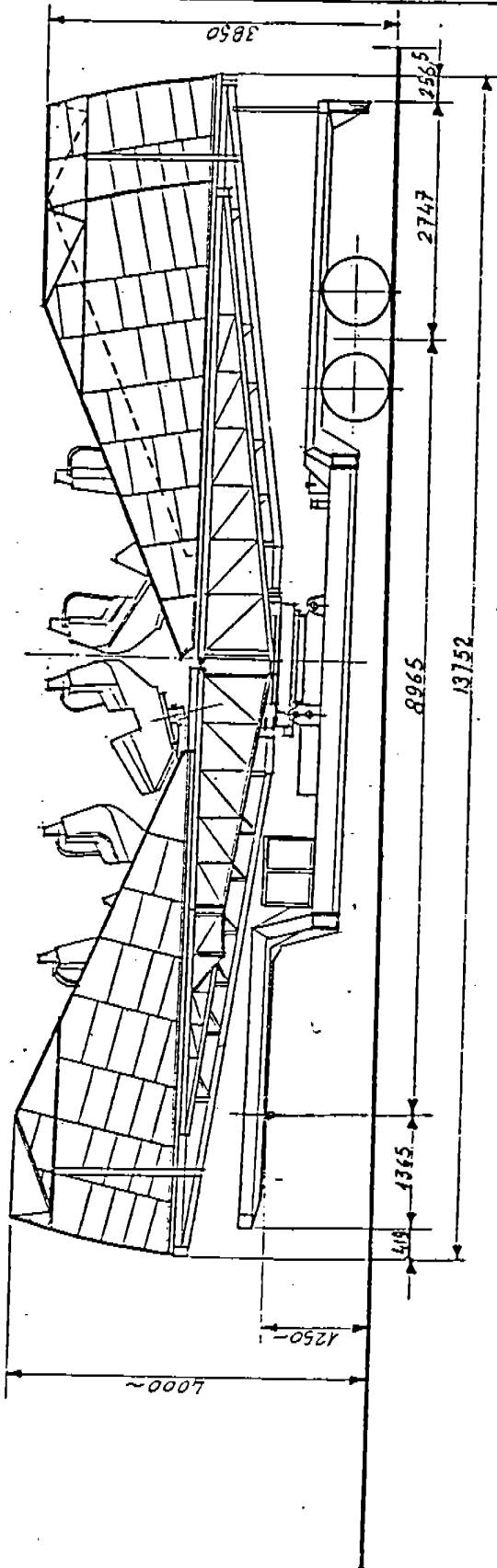
Data _____

Dis. _____

*FAR FABBRI srl**Via Giovecca n° 74**45032 BERGANTINO (RO) ITALIA**Telefono: 0425 87142*

This document is an integral part of the supply of the amusement ride. It consists of two (2) copies - one (1) is given to the customer and one (1) stays in our office at the disposal of the organization who has competence and title. The customer is responsible for his own copy, so he must keep it in a safe place and have a complete understanding of the contents of this document.

FAR Direz. tecnica	P. 001 GIOSTRA "CRAZY DANCE" ASSETTO IN TRASPORTO		13.001.00-S.R.
Data 1987	TRASPORTO	CONFIGURATION	Dis. <i>Lincoln</i>



1-2-3-4- Vetture fisse
 5-6-7- Vetture mobili

fixed vehicles

mobile vehicles

BASE

It consists of a truck where the amusement ride is installed and it is the place where the hydraulic, pneumatic, and electric equipment, installations are laid. It's structure is designed so that it can hold with a large security all the static and dynamic stress of the ride in movement. It is placed on the ground not only with the wheels of the truck but also with the hydraulic levelling jack, with appropriate outriggers with screw jacks.

Main Technical Data

Construction material
Front and Back Neck
Crossbar for legs
Legs
Rotating Center Frame

FE 37 Beam 300B
Beam HEA 200
FE 37 Tube R. 300x200x10
Tubular
FE 37 Tube Q 200 x 10

1. Truck Frame
2. Back Train
3. Hydraulic Jacks
4. Screw Jacks
5. Underpinning Legs
6. Frame for Rotating Center

Dis. 13.101.00 SR
Dis. 13.103.00
ST. 83-45x260
ST. 82 / ST. 75
Dis. 6.105.00
Dis. 13.201.00

PLATE

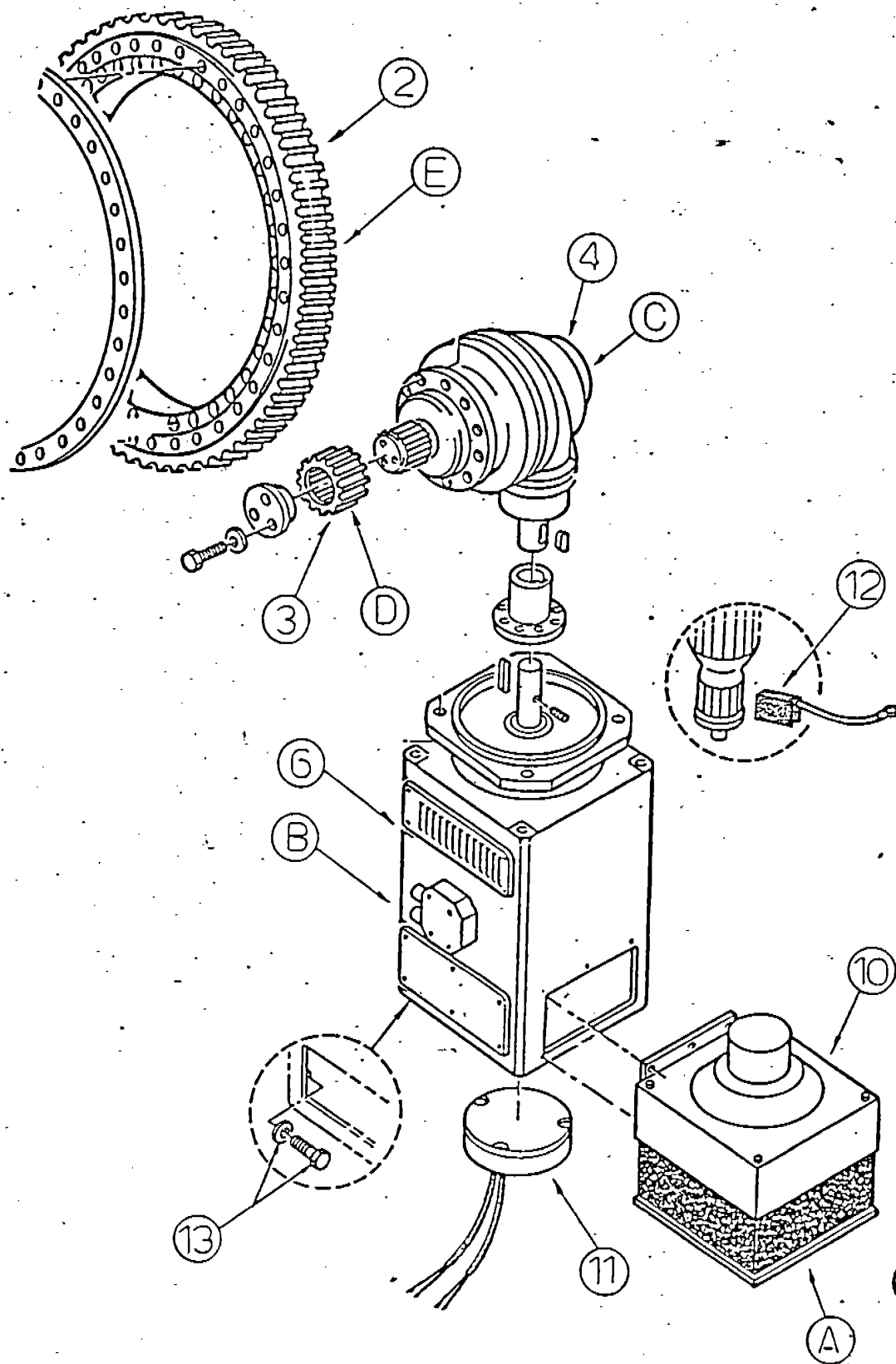
It consists of a circular framework. On the plate, you can distinguish four (4) main arms whose function is both for support and movement, and other secondary ones whose main function is to hold the platform. The plate is built with consideration of the folding of the ride during transport. On the main four (4) arms are located the bearing discs for the mechanical connection with the satellites. The base of the plate is a rotating center.

Main Technical Data

Main Arm	Tube Q. 80 x 4
Fixed Intermediate Arms	Tube Q. 80 x 4
Flexible Intermediate Arms	Tube Q. 80 x 4
Long Intermediate Flexible Shelf	Tube Q. 40 x 2
Short Intermediate Flexible Shelf	Tube Q. 40 x 2
1. Main Arm	Dis. 13.311.00
2. Fixed Intermediate Arms	Dis. 13.312.00
3. Long Flexible Intermediate Shelf	Dis. 13.314.00
4. Short Flexible Intermediate Shelf	Dis. 13.315.00
5. Flexible Intermediate Shelf	Dis. 13.313.00
6. Frame for Rotating Center	Dis. 13.201.00

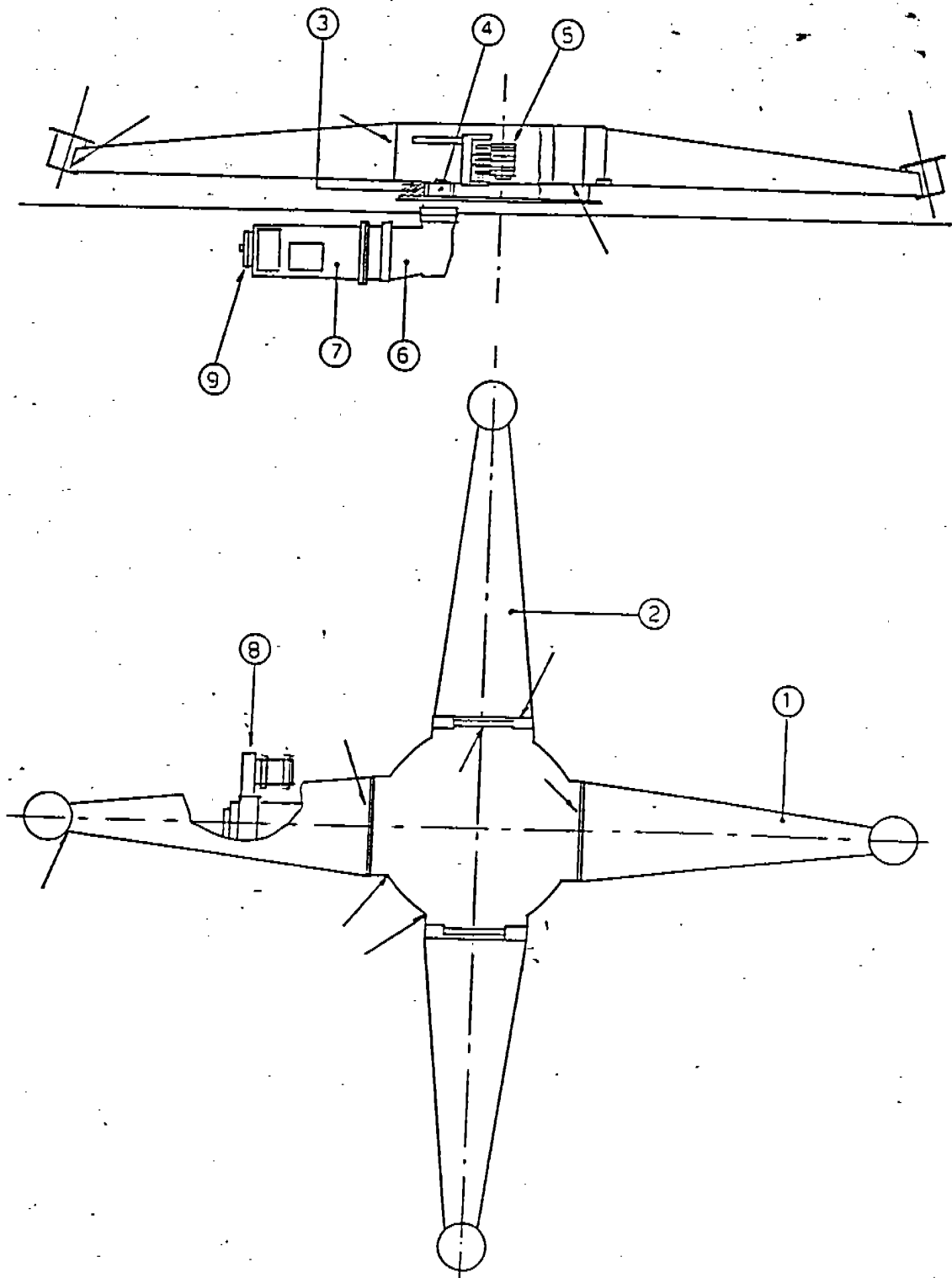
Data

Dis.



Data _____

Dis. _____



SATELLITE

It consists of a strong steel plate structure which has a space for the vehicle hubs at its end. Two of its four (4) ends are welded at the center of the satellite which has a circular shape. The other two (2) must be detached when you close the plate. At the base of the satellites there is a bearing disc which consents a rotating motion. The motion is made through a ring and pinion gear. At the pinion is fixed the motor reducer at which is connected an electric DC motor through a bell housing.

MAIN TECHNICAL DATA

Fixed Arm
Mobile Arm
Frame

Fe 37 Plate/Sheet 4mm
Fe 37 Plate/Sheet 4mm
Fe 37 Plate/Sheet 15/8/6mm

1. Fixed Arm
2. Mobile Arm
3. Bearing Disc
4. Pinion
5. Collector
6. Reducer
7. Motor
8. Fan
9. Electric Magnet Brake
10. Motor Brakes
11. After the first fifty (50) hours of operation, check and torque the bolts. Then, this control has to be made every 500 hours.

Check periodically the torque of all the bearing discs clamping bolts. Check every month the collectors of electric distribution and the wear of the brakes.

VEHICLE HUBS

It consists of a flange and a hub, two (2) bearings are placed between them. The above part is connected to the vehicle while the upper part is connected to the satellite. There is arranged a brake which blocks the car when the ride is not in motion.

MAIN TECHNICAL DATA

Hub Tree	38 NCM 8 0/ = 90 mm
Hub	Fe 42 different thickness
1. Rig Nut	295
2. Oil Seal Ring	Dis. 13.414.00
3. Oil Seal Gasket	636 110x80x10
4. Bearing	356
5. Hub	Dis 13.412.00
6. Insulator - Sleeve	Dis 13.418.02-03
7. Commentator	Dis. 13.417.00
8. Brake Flange	Dis. 13.415.00
9. Electric Magnet Brake	542
10. Oil Seal Gasket	636
11. Oil Seal Ring	Dis 13.413.00 B
12. Bearing	356
13. Hub Tree	Dis 13.411.00 B
14. Washer	Dis 13.413.00 B
15. Rubber Washer	207
16. Peg for Brake	Dis 13.419.00 B
17. OR 124 Ring	
18. 1/2" Cap	
19. B 10 x 1 Grease Fitting	

Periodically, lubricate the hub of the vehicle.

VEHICLE

It consists of a combination of steel and fiberglass. It carries people who want to enjoy a ride on the amusement ride. It is provided with lights which both help to decorate the car itself and to create effects of lights.

MAIN TECHNICAL DATA

Main Frame

Fe 37 Steel Section U NP 65x42mm

- | | |
|--|-----------------|
| 1. Rear Lights | 723 TIR 1L Ar |
| 2. Head Lights | 721 Jugo |
| 3. Clearance Lights -
Plastic Marker Lights | 724 TRPZ |
| 4. Terminal | 736 2,5 / 736 6 |
| 5. Light Bulb | 704 H3 12/55 |
| 6. Bayonet Base Bulb | 704 24/10 |
| 7. Bayonet Base Bulb | 704 24/5 |

Direz. tecnica	MANUTENZIONE MAINTENANCE			Pag. 22
Data				Dis.

MANUTENZIONE

Per il buon funzionamento e per il mantenimento della piena efficienza operativa, si consiglia:

MAINTENANCE

For the good running condition and full working efficiency of the equipment, it is advisable to carry out the following procedure:

FILTRO ASPIRAZIONE A

Ogni settimana smontare il filtro e pulirlo con aria compressa.

SUCTION FILTER A

Every week disassemble the filter and clean it with compressed air

MOTORE ELETTRICO B

Ogni sei mesi controllare lo stato di usura della spazzola e collettore motore. Controllare il serraggio dei dadi della morsettiera e fare una pulizia generale esterna del motore in modo particolare alle feritoie dell'uscita aria di raffreddamento.

ELECTRIC MOTOR B

Every six months check the wear of the motor brushes and collector, the terminal box nuts screwing up and make an external general cleaning of motor, in particular the air cooling vent-holes.

RIDUTTORE C

Per la lubrificazione del riduttore vedere la specifica in allegato.

REDUCER C

For reducer lubrication see enclosed specification.

PIGNONE D

Controllare mensilmente lo stato di usura dei denti. Qualora si verificasse un gioco eccessivo tra i denti pignone e ralla, sarà opportuno procedere alla sostituzione del pignone.

PINION D

Check every month the teeth wear. By detecting an over clearance between pinion and bearing disc teeth, it will be necessary to replace the pinion.

CUSCINETTO DI BASE (RALLA) E

Controllare mensilmente lo stato di usura dei denti. Mettere grasso tra i denti utilizzando un prodotto come da specifica grassi in allegato. La lubrificazione deve essere effettuata ogni 100 ore.

BEARING DISC E

Check every month the teeth wear. Put grease between teeth using a product as from enclosed greases specification. Lubrication must be done every 100 hours.

INGRASSATORI CUSCINETTO DI BASE

Lubrificare ogni 100 ore di lavoro con grasso come da specifica grassi in allegato.

BEARING DISC GREASER

Lubricate every 100 hours running with grease as from enclosed greases specification.

VITI FISSAGGIO CUSCINETTI DI BASE

Dopo 50 ore di lavoro controllare la coppia di serraggio delle viti (37 da N.m). Successivamente questo controllo dovrà essere effettuato ogni 500 ore.

BEARING DIS. CLAMPING SCREWS

After 50 hours running check the screws torque (37 da N.m). Then this control has to be made every 500 hours.

VITI FISSAGGIO RIDUTTORE

Dopo 50 ore di lavoro controllare la coppia di serraggio delle viti (19 da N.m). Successivamente questo controllo dovrà essere effettuato ogni 500 ore.

REDUCER CLAMPING SCREWS

After 50 hours running check the screws torque (19 da N.m). Then this control has to be made every 500 hours.

Data

Dis.

GULF	GULF CROWN Grease No. 2	da - 30° a + 120°C	ARAL	ARAL HL 2	da - 35° a + 130°C
	GULF LUBCOTE No. 2	da - 20° a + 60°C		ARAL Shell FZ 12 ARAL LFZ	da - 20° a + 80°C da - 20° a + 200°C
MOBIL	MOBILUX 2	da - 35° a + 130°C	BP	BP ENERGREASE LS 2	da - 30° a + 120°C
	MOBILTAC 81	da - 30° a + 120°C		BP ENERGOL WRL	da - 20° a + 80°C
IP	IP Alvania R2	da - 30° a + 130°C	CASTROL	CASTROL SPHEEROL AP 2	da - 20° a + 130°C
	IP Cardium Fluid D IP Fluid 12	da - 20° a + 60°C		CASTROL SPHEEROL APT 2	
		da - 20° a + 60°C		CASTROL GRIPPA 33 S	da - 20° a + 80°C
TEXACO	Multifak 2	da - 20° a + 120°C	CHEVRON	CHEVRON Dura-lith Grease 2	da - 25° a + 125°C
	Crater 2 X Fluid	da - 20° a + 120°C		CHEVRON Pinion Grease MS	da - 20° a + 125°C
VALVOLINE	VALVOLINE LB-2	da - 20° a + 120°C	ESSO	BEACON 2	da - 30° a + 130°C
	VALVOLINE Dipper stick	da - 20° a + 220°C		SURETT Fluid 30	da - 20° a + 60°C

M. The motors of the plate and those of the satellites are controlled by electronic cards. Their calibration is made in a way that the speed is not faster than the following values:

Plate speed 12 R/minute
Satellite speed 20 R/minute

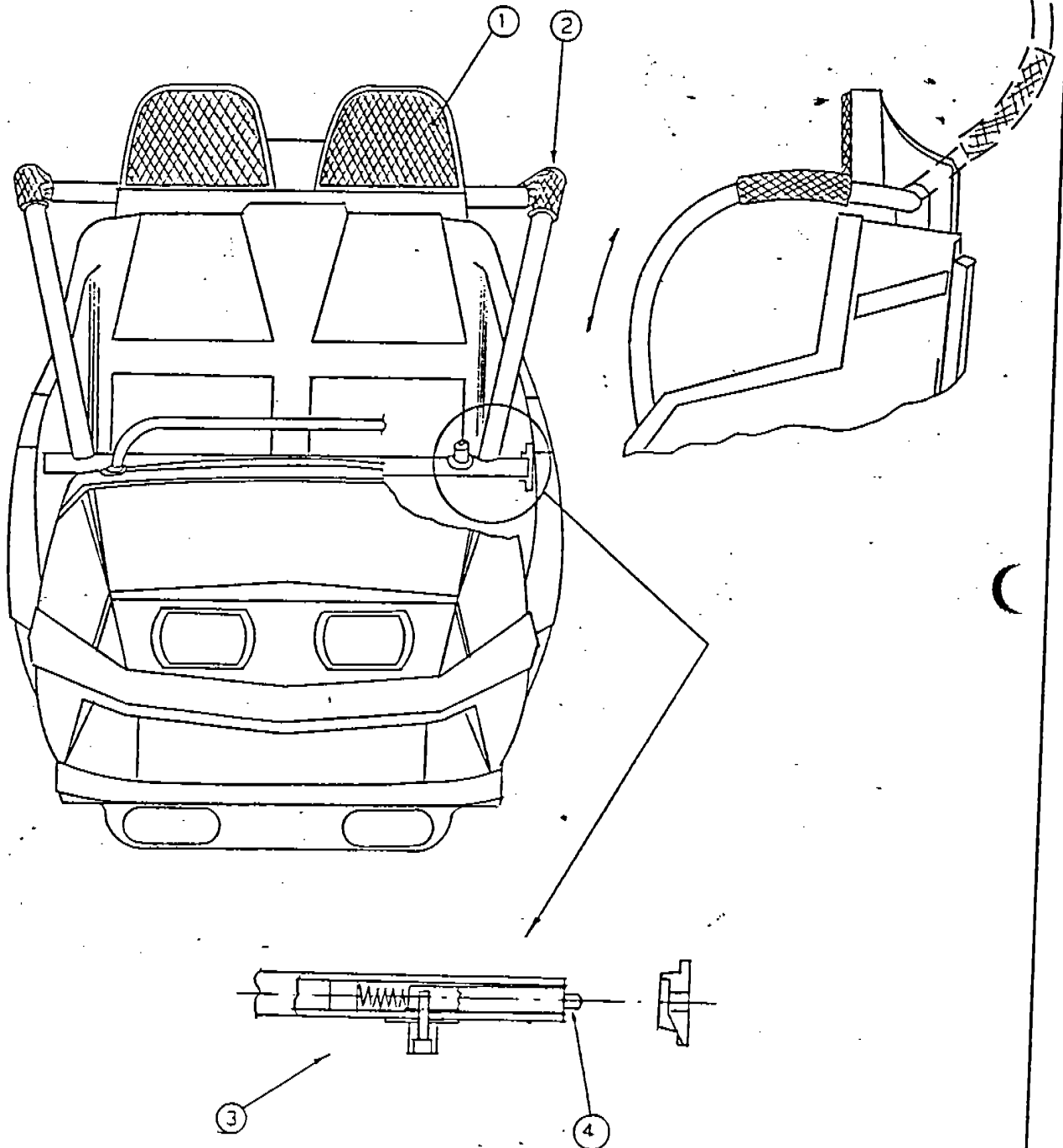
The operator must check daily that the above mentioned calibrations keep always the established values.

So never run the plate and the satellites in the same rotating direction.

- L. The trailers of the equipment may be subject to suddenly efforts or snatches/tears by crossing a step at the entrance of a square, for instance. So, the customer must check periodically the main welding of the trailer for the safest security.

Data _____

Dis. _____



ANNUAL INSPECTION

This ride is provided with static calculations which are in our possession in case of inspections or verifications. The ride is, where it is sold, provided with a certification of the first inspection which is part of this present documentation.

The rest of Public Safety of Italy at the Article 80 provides that all amusement rides must be inspected once a year by qualified technicians and that the wheels are inspected by I.S.P.E.C.L. (A.U.C.C.).

1. If there are initial defects of construction or possible defects coming up in the future or during next inspection, the technical inspector must immediately inform the company of construction, who after analyzing the problem, will choose whether repairing or modifying the ride by his own competent personnel or will indicate the inspector of a local factory. After all the repairs or modifications, the ride must be inspected again by the same inspector who found the defects or leaks, and the same inspector then will send under his responsibility, a report of the modifications or repairs to the company of construction. A copy of the report will be an integral part of this documentation.
2. The rides which run abroad, out of the Italian territory, whether they belong to Italian customers or foreign owners, they must be inspected before running and then every year by a local technician who will follow the instructions in paragraph 1.

Modifications or repairs must follow the rules indicated above in paragraph 1.

It is very common among some ride owners to look for friendly technician inspectors who sign the inspection without seeing or inspecting the ride. We ask our client to avoid such solutions because in case of serious accidents, they are deeply involved with the technician in questioning. The various technician reaches the place where the ride is to be inspected and controls the static calculations, checks all the welds, the materials, the securities, etc. and only after a good control he will sign the inspection paper.

OUR COMPANY IS NOT RESPONSIBLE FOR POSSIBLE ACCIDENTS IF THE RIDE HAS NOT BEEN INSPECTED IN THE LAST YEAR.

The trailer is considered an integral part of the ride, so it must be inspected over a year together with the ride itself.



MANUFACTURERS OF AMUSEMENT RIDES

45032 BERGANTINO (Rovigo) Italy
Via Giovecca, 74 - Tel. 0425 / 87420 - 87142

M/710794 - C.C.I.A.A. RO N. 70381 - TRIB. RO REG. SOC. N. 4028
C.F. e P. IVA 00724000294

TELEX 434839 SPARCO I - TELEFAX 0425-878113

SERVICE BULLETIN

RIDE: CRAZY DANCE DATE: DECEMBER 10, 1990
SUBJECT: VEHICLE SPINDLE BOLTS BULLETIN NUMBER: FC001

It has been determined through investigation that the bolts used to lock the vehicle tapered spindle into its socket on the end of the satellite sweep can loosen over a period of time. The following modification, change in components and maintenance change are now required by the manufacturer, FarFabbri, s.r.l.

1. Existing bolts x lock washers (24 mm x 80 mm x grade 8.8) are to be replaced with 24 mm x 80 mm x grade 10.9 and torqued in place to 700 nm (515 ft. lbs) (refer to Figure A).
2. Install tapered spindle lock bolts (refer to Figure B).
3. Change maintenance procedure to include checking the torque of the bolts on a monthly basis.
4. Replace bolts on an annual basis.

Kits are available for lock bolt and replacement bolts free of charge and can be ordered through Exsaco Corporation, One North Santa Fe Street, Alvarado, Texas 76009, 817-783-2265.

A handwritten signature in black ink, appearing to read 'FarFabbri', is written over a horizontal line. Below the line, the text 'FarFabbri, s.r.l.' is printed.

FarFabbri, s.r.l.



FARFABBRI S.R.L.

MANUFACTURERS OF AMUSEMENT RIDES

45032 BERGANTINO (Rovigo) Italy
Via Giovecca, 74 - Tel. 0425 / 87420 - 87142
W710794 - C.C.I.A.A. RO (I. 00591) - TRIB. RO REG. SOC. N. 4028
C. F. e P. IVA 00724000294
TELEX 434839 SPARCO I - TELEFAX 0425-878113

SERVICE BULLETIN

RIDE: CRAZY DANCE DATE: DECEMBER 10, 1990
SUBJECT: DETACHABLE VEHICLE BULLETIN NUMBER: FC002
SWEEP HOOKS

It has been determined by FarFabbri, s.r.l. of the necessity to inspect and test by approved non-destructive testing procedures the sweep hooks and welding located in the inside end of the detachable vehicle sweeps (refer to Point A). This inspection must be done on an annual basis. If cracks are detected, consult the factory for proper repair procedures.

Annual testing of this hook weldment can be waved if a new secondary bolting weldment is installed. (refer to Point B). Kits are available through Exsaco Corporation, One North Santa Fe Street, Alvarado, Texas 76009.

FarFabbri, s.r.l.



MANUFACTURERS OF AMUSEMENT RIDES

45032 BERGANTINO (Rovigo) Italy
Via Giovecca, 74 - Tel. 0425 / 87420 - 87142
M/710794 - C.G.I.A.A. RO N. 30591 - TRIB. RO REG. SOC. N. 4028
C.F. e P. IVA 0072400 029 4
TELEX 434839 SPARCO I - TELEFAX 0425-878113

SERVICE BULLETIN

RIDE: CRAZY DANCE

DATE: March 17, 1993

SUBJECT: Spindle Bolts

BULLETIN NUMBER: FC003

This bulletin replaces and nullifies bulletin F010 and FC001.

Background Information

A typographical error has been brought to the attention of FarFabbri, s.r.l. regarding Service Bulletin F010. Service Bulletin F010 only pertains to those rides with serial numbers 009 and lower, and not all rides. The reason is, those rides are equipped with a 22mm spindle bolt. Rides with Serial number 010 or higher are equipped with a 24mm spindle bolt. (Figure A shows the location of this bolt.)

Bulletin Requirements

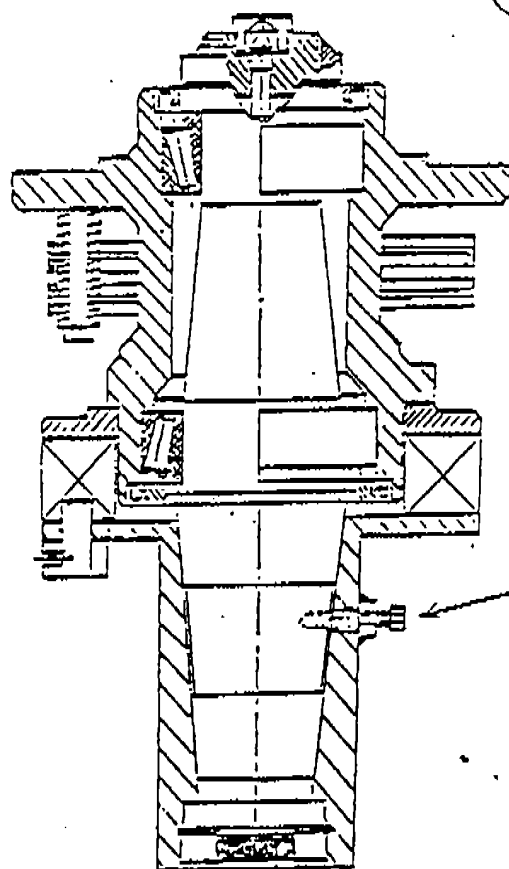
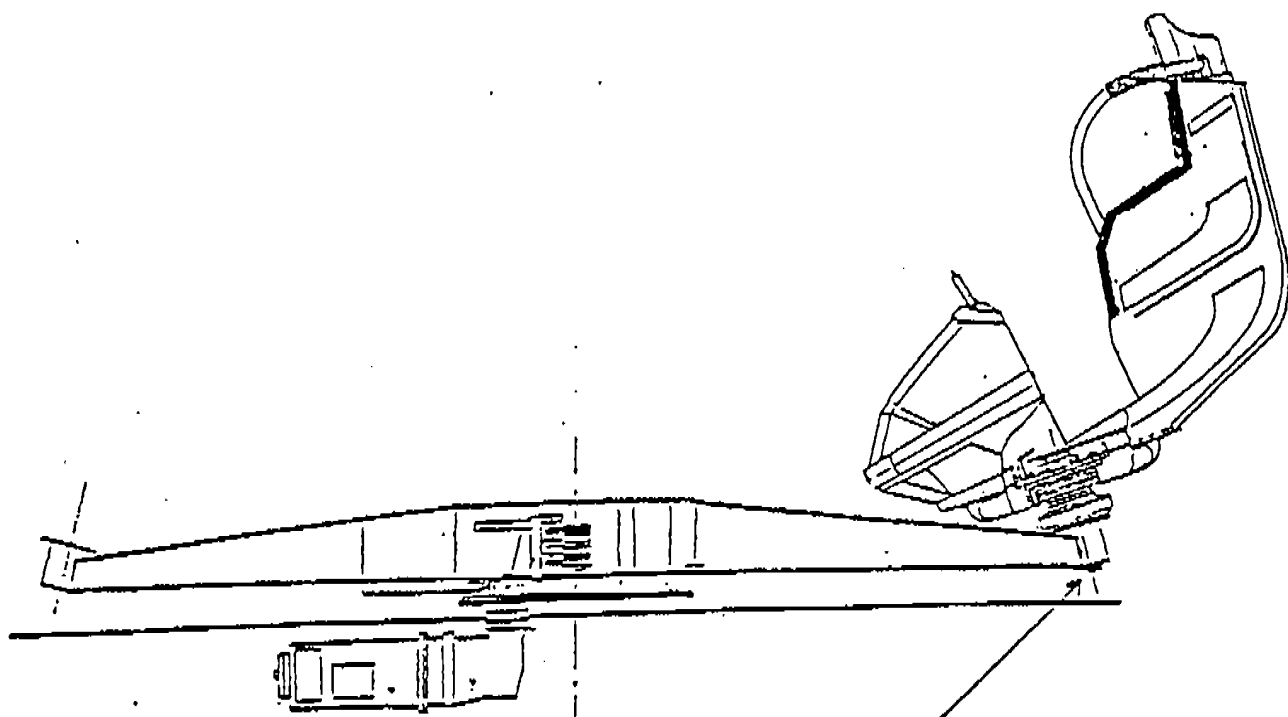
1. FarFabbri, s.r.l. requires that all spindle bolts be replaced on an annual basis.
2. Use only grade 10.9 bolts.
3. Your monthly maintenance procedure should include checking the torque of these bolts. Refer to the following chart for recommended torque values pertaining to your equipment.
4. All rides should have a factory installed spindle safety bolt (Figure B). If you do not, contact Exsaco Corporation immediately at 1-800-545-0667 or 817-783-2265.

<u>Bolt Size</u>	<u>Untreated</u>	<u>Zinc Plated</u>
22 x 80 mm	430 ft. lb.	400 ft. lb.
24 x 80 mm	550 ft. lb.	515 ft. lb.

If you should have any questions, or require further information regarding this Service Bulletin, please contact Exsaco Corporation, One North Santa Fe St., Alvarado, Texas 76009, at 1-800-545-0667.

FAR FABBRI s.r.l.
Costruzioni Spettacoli Viaggianti
Via Giovecca, 74 - Tel. 0425 / 87142
45032 BERGANTINO (RO)
C.F. e P. IVA 0072400 029 4


FarFabbri, s.r.l.





MANUFACTURERS OF AMUSEMENT RIDES

45032 BERGANTINO (Rovigo) Italy
Via Giovecca, 74 - Tel. 0425 / 87420 - 87142

M/710794 - C.C.I.A.A. RO N. 90591 - TRIB. RO REG. SOC. N. 4028

C. F. e P. IVA 00724000294

TELEX 434839 SPARCO I - TELEFAX 0425-878113

SERVICE BULLETIN

RIDE: CRAZY DANCE

DATE: April 9, 1993

SUBJECT: Car Spindle Case Weld

BULLETIN NUMBER: FC004

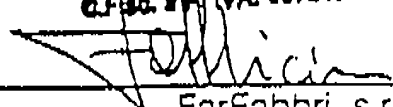
SERIAL NUMBERS: 17 AND LOWER

An incident occurred where the car spindle case separated from the sweep. This incident was directly related to an insufficient weld application. Through further inspections of the remaining rides, it was determined to be an isolated case. Refer to Drawing A for the location of possible cracks.

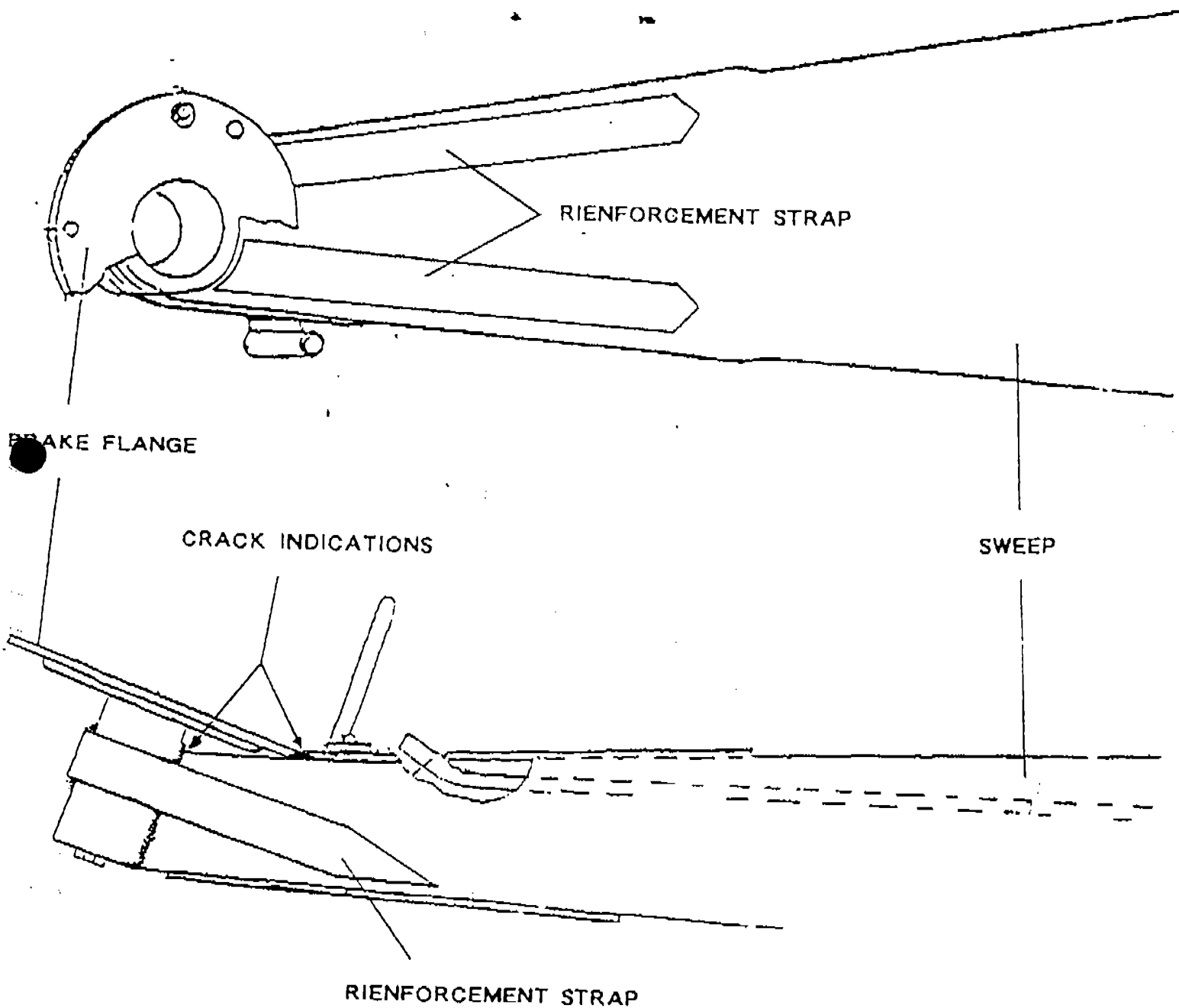
We are currently preparing a reinforcement kit to be welded on the sweep in place of the old strap. A factory representative will notify you when the kit is ready and will come to your location to install this kit.

In the meantime, you are required to visually inspect the suspect area each day before opening the ride to the public. If any cracks are detected, contact Exsaco Corporation at 1-800-545-0667 or 817-783-2265 immediately.

FAR FABBRI S.r.l.
Costruzione Spettacoli Viaggianti
Via Giovecca, 74 - Tel. 0425 / 87142
45032 BERGANTINO (RO)
C.F. e P. IVA 00724000294


FarFabbri, s.r.l.

DRAWING A





MANUFACTURERS OF AMUSEMENT RIDES

45032 BERGANTINO (Rovigo) Italy
Via Giovecca, 74 - Tel. 0425 / 87420 - 87142
M/710794 - C.C.I.A.A. RO N. 30551 - TRIB. RO REG. SOC. N. 4028
C. F. e P. IVA 0072400 029 4
TELEX 434839 SPARCO I - TELEFAX 0425-878113

MAINTENANCE PROCEDURE UPDATE

RIDE: Crazy Dance
SUBJECT: Car/Hub Bolts

SERIAL NUMBERS: ALL
DATE: April 9, 1993

Background Information

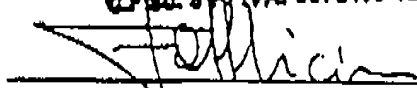
An incident occurred where the car/hub bolts vibrated loose even though lock washers were in place. This allowed the car flange to move and deform the threads in the hub. Eventually, all the bolts stripped out and the car landed on the platform. Luckily, no one was injured.

Maintenance Procedure Update (Refer to Drawing)

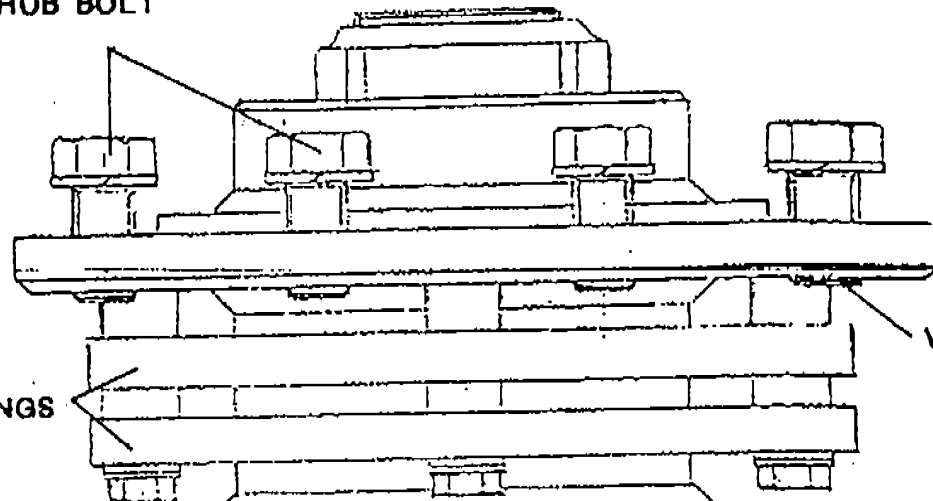
Rather than inspecting those bolts annually, FarFabbri, s.r.l. requires a weekly visual inspection and a monthly torque check. Refer to the following chart for torque requirements on those bolts.

<u>Bolt Size</u>	<u>Status</u>	<u>Torque</u>
16mm x 30, grade 8.8	Original Bolt	150 ft. lbs.
18mm x 30, grade 8.8	Replacement Bolt	190 ft. lbs.

FAR FABBRI s.r.l.
Costruzione Spettacoli Viaggianti
Via Giovecca, 74 - Tel. 0425 / 87142
45032 BERGANTINO (RO)
C.F. e P. IVA: 0072400 029 4


FarFabbri, s.r.l.

CAR/HUB BOLT



VISUALLY INSPECT

COMMUTATOR RINGS

ELECTRIC BRAKE

