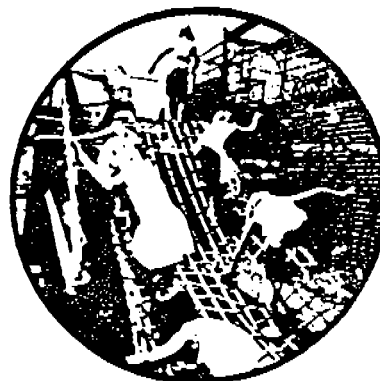
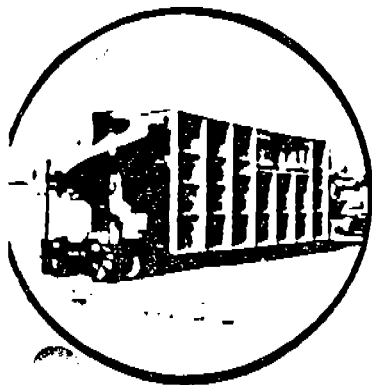


Don't just let the
LET THEM PLAY
an all New, Portable, Trailer Mounted, Creativ

MFG: KID POWER SYSTEMS
NAME: JUNGLE OF FUN
TYPE: ATTRACTION



KID POWER SYSTEMS

Features 10 Different & Individual Play Elements



KID POWER SYSTEMS

P.O. BOX 02317
PORTLAND, OREGON 97202
(503) 241-7623

January 10, 1983

JUNGLE OF FUN
Portable Play Area
(10 play elements)

CONCEIVED, DESIGNED, AND BUILT
by
Patrick Boyle
of
KID POWER SYSTEMS

-1983-

Portable and Permanent "Creative" Play Areas Available
DIVISION OF CKP INC.

'Jungle of Fun'

Set-up Procedure

Requires minimum of 2 people

- 1) After spotting trailer, level unit in both directions. Landing gear are located both under the 5th wheel and rear of trailer behind the back axle.
- 2) With hydraulic jack, lift at center of trailer, one side at a time. Raise a minimum of 1½" and stack blocks to support weight of trailer. There are pads provided in the center of the trailer for lift points.
- 3) Connect power. Unit requires 220 volt AC, single phase approx. 30 amps. Unit has a 100' power lead and is located behind the 5th wheel.
- 4) NOTE: Drivers side of trailer has a 32' floor.
Passenger side of trailer has a 28' floor.

LOWER 28' FLOOR FIRST!

- A) Make sure winch cable hook is attached to chain on floor. This connection takes place in the ball crawl area.
- B) Climb to top of trailer and pre-set 3 of the floors' 5 legs using double snapper pins. (set end legs and middle legs). This is done in case the winch cable fails the floor will not drop all the way to the ground. With hammer, remove key, drive out the two 5/8" pins holding floor to trailer frame.
- C) Re-locate to drum switch for the winch. It is located above the exit door to the ball crawl. Let out the cable a few inches at a time, manually pushing the floor simultaneously for the first few feet. This step will require 2 people-one pushing the floor, one operating the winch.
- D) Lower floor all the way to the ground. Level the floor across the width. (lengthways will be level because trailer is level) Unhook winch cable from floor chain. Apply tension to cable and rewind it onto drum.
- E) Hook winch cable to 32' floor chain. Return to top of trailer. Set 3 floor legs and remove 5/8" floor pins.

LOWER 32' FLOOR

- F) Repeat lowering procedure. This procedure will require 2 people. One to operate the winch controls and one to push the floor out from atop the trailer. Detach winch cable from floor chains. Rewind onto drum.

' JUNGLE OF FUN '
Portable Play Area

This unit features the following 10 elements. (In order of appearance).

- 1) BOUNCE AROUND
Inflatable tunnel/tube
Requires constant power (110-V)
- 2) ROPE CLIMB
Dacron Rope on a 6" grid
welded joints/42" high side/safety nets
- 3) TIPSYPY-TUNNEL
5 polypropylene tubes/cradled in sheetmetal hung by a
4 point suspension, supported by a 1/2" dia. cable.
- 4) ROPE TUNNEL
35" dia. by 18' polyester rope on 5" grid.
Unit supports itself as it is stretched between a
steel frame.
- 5) TUBE-SLIDE
1-shape 27" dia. tube featuring a right angle, quarter
turn at the bottom. Materials consist of a combination
of stainless steel and fiberglass.
- 6) BALLS FOR ALL
Chamber approximately 7' wide, 17' long and 20" deep.
Balls are 3" dia. polypropylene green and yellow. Area
req. approx. 6,250 balls.
- 7) PUNCHING BAGS
Total of 6 red/yellow foam filled/vinyl covered cylinders
hung from swivel connectors.
- 8) BUMPY-BRIDGE
kiln dried redwood 2" x 6" planks strung with 3/8
cable. (adjustable)
- 9) NET CLIMB
Dacron rope on a 6" grid
welded joints/42" high, side/safety nets
- 10) SPIRAL SLIDE
fiberglass construction/stainless steel bedway slide

JUNGLE OF FUN

Light bulb- Fastner- and Tool Requirements

Fastners:

- 31 ea. Snapper pins 3/8 dia. 2½" long
- 5 ea. 7/16"x2 NC Bolts. Nuts/washers (spiral slide)
- 3 ea. 3/8"x 5" bolts with key
- 6 ea. 3/8"x 2½" bolts with key
- 10 ea. mouse keys
- 4 ea. ½-20 wing nuts

Tools:

- 5/8" deep socket (½" drive)
- 11/16" box end wrench
- ½" drive ratchet
- hammer (claw)
- pliers
- 10" crescent wrench
- 5 ton hydraulic jack/ handle
- level

Light Bulbs:

- 190 ea. 11 watt (clear)
- 6 ea. 6 ft. flourescent bulbs
- 1 ea. 8 ft. flourescent bulb
- 4 ea. 150 watt flood lights
- 7 ea. 500 watt quartz bulbs

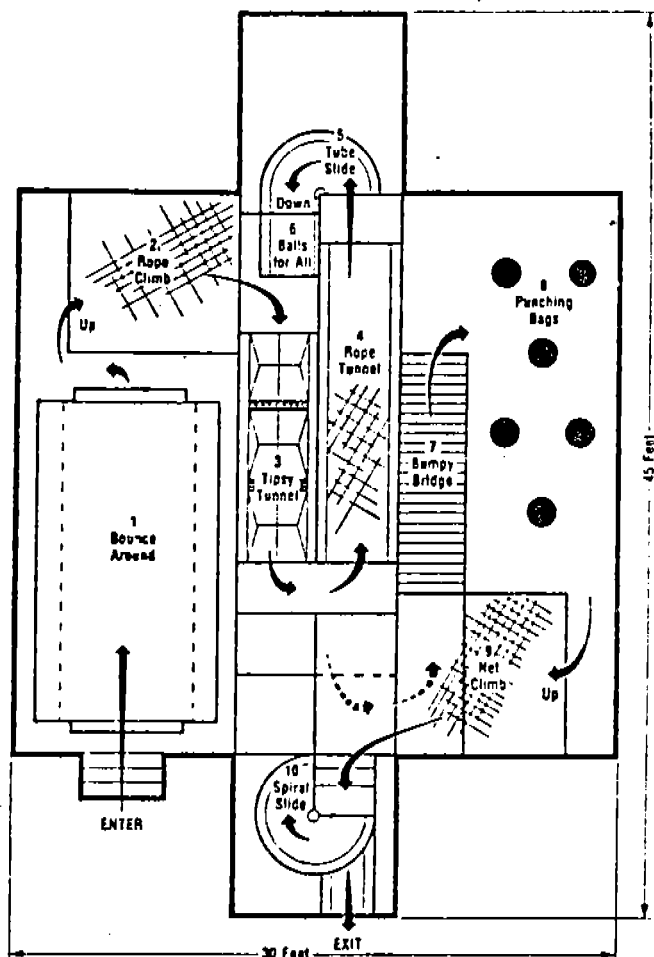
If you are looking for a new piece of equipment to bring a new image to your midway, KID POWER SYSTEMS has it with their all new, trailer mounted portable play area. An already popular, successful concept once only available to park operations can now be easily operated on your midway. Hands-on participation is the key to new profits on your show. The kids go from one exciting play element to the next. The action never stops as the kids bounce, flip, climb, crawl, wiggle, slide, jump, fall, toss, burrow, punch, swing, run and play. Turn that wild kid powered energy into huge new profits!

The play area features ten different individual play elements. These include: 1) Bounce-Around, 2) Rope Climb, 3) Topsy-Tunnel, 4) Rope Tunnel, 5) Tube-Slide, 6) Balls for All, 7) Bumpy-Bridge, 8) Punching Bags, 9) Net Climb, and 10) Spiral Slide.

Kids love it. They go through it again and again. Parents love it. They can see their kids at all times and know that their children are having the time of their lives. In fact, the parents cheer their kids on. This gives the children a sense of achievement, building their self-confidence. Parents send their kids back through many more times making the play area a real repeater. It's no wonder the trailer mounted play area can easily pay for itself in only one season.

The unit has consistently been number one in kiddie land week after week. Over 60,000 kids have gone through the play area since its recent introduction. There have been no accidents, injuries or complaints. Many safety features are designed right into the unit. All play surfaces are completely carpeted, all posts are padded and all critical edges are rubber lined. A maintenance mans' delight. No machinery, no hydraulics, and no moving parts means no breakdowns and low overhead. The unit has been thoroughly tested by factory personnel both on the midway and down the road. The play elements are constructed from the finest, most durable materials available and an all steel structure insures a long service life.

The portable 'creative' play area by KID POWER SYSTEMS is your answer to increased profits.



General Specifications

Ground Space Required: 30' front, 45' depth

Electrical Requirement: 220 volts,
single phase/30 amps

Trailer:
45' long,
weight — 18,500 lbs.
(full air brake set-up)

Capacity:
Can easily handle
750 per hour

Set-up Time: 2 men/2 hours

Fold-up Time: 2 men/90 min.

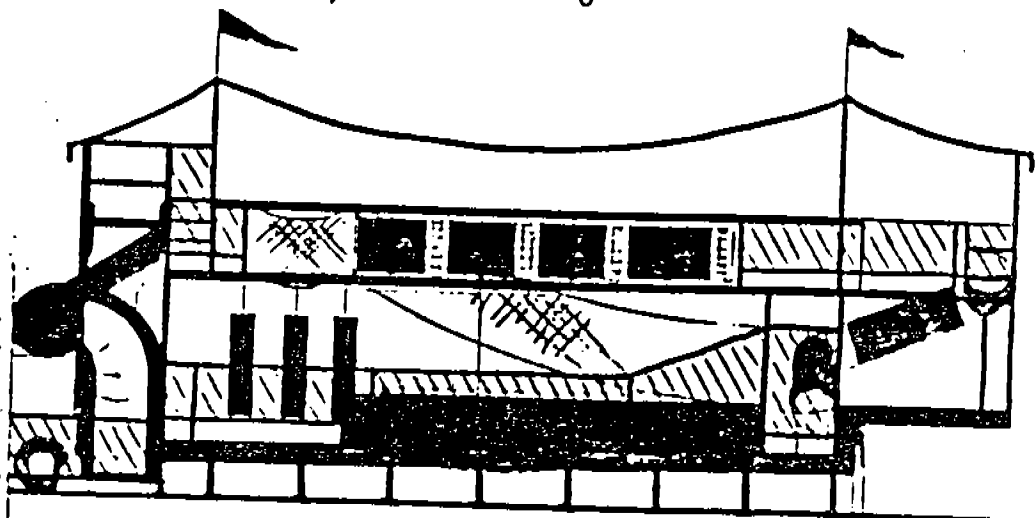
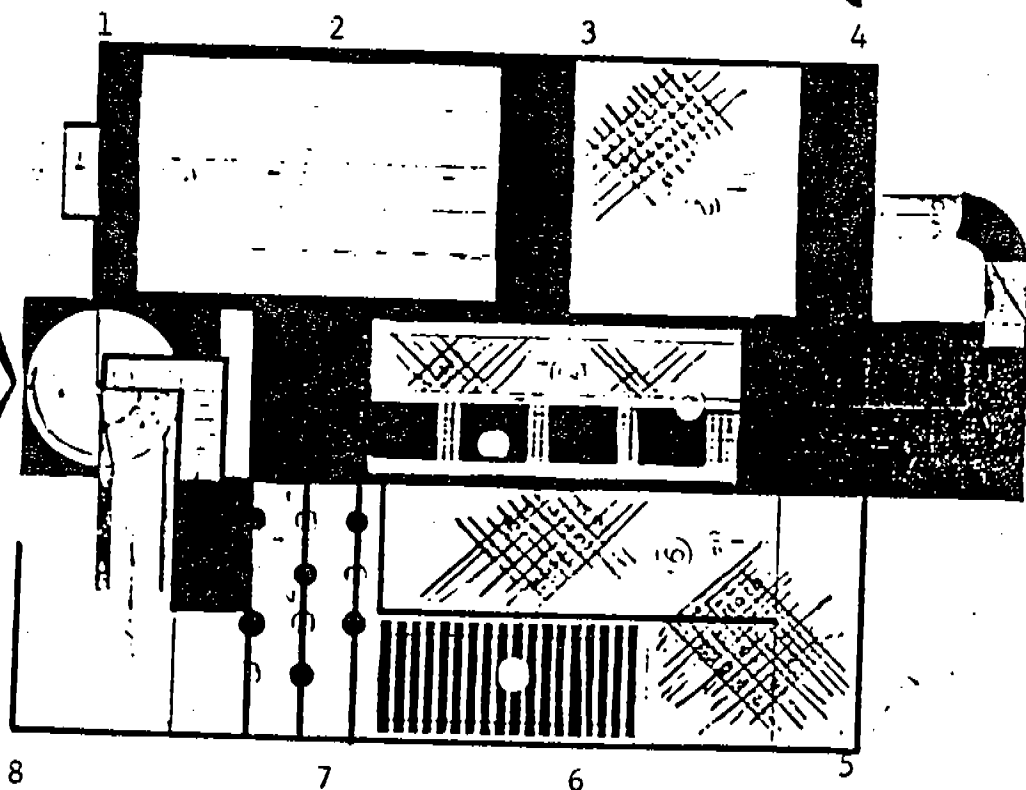
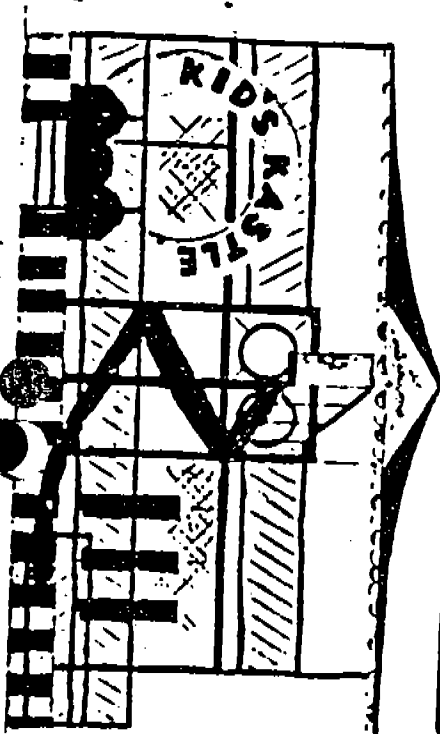
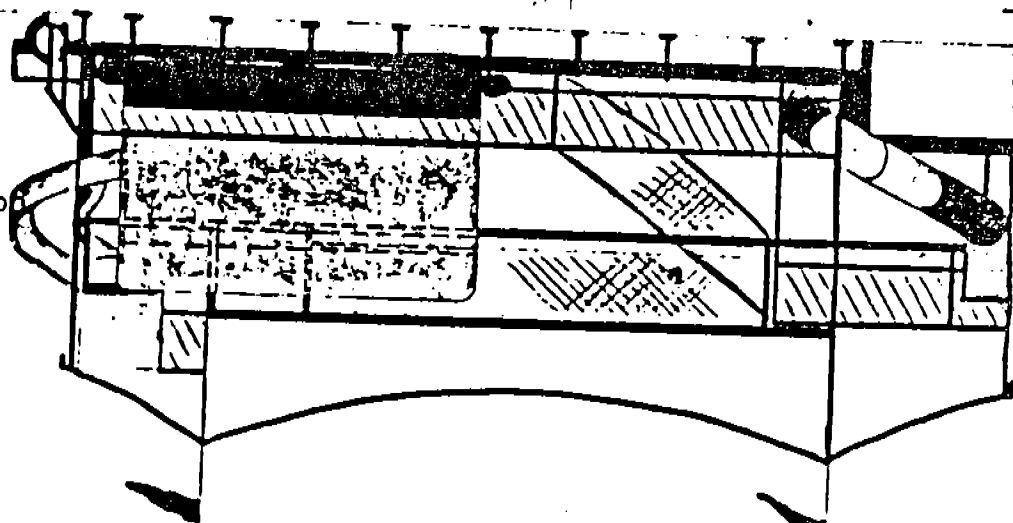
Options:
Choice of theme,
colors, sound system
and bally tape
(smaller models
available)



KID POWER SYSTEMS - A Division of CKP Inc.

P.O. Box 02317 Portland, Oregon 97202 (503) 241-7623

DIAGRAM 1A
tent pole location



KID'S KASLE

- 20) Install the 2 lift chains.

NOTE:

The chain with small hooks is for the 28' floor
The chain with large hooks is for the 32' floor

- 21) Remove height sign from front of play area
- 22) Fold and tie the pillow bounce into place.
- 23) Fold down and pin to two front fence.
- 24) Unclip and fold in side nets of the rope climb.
- 25) Lower the rope climb and hook the 3/4" rod clip to the outer support leg (at floor level) of the stationary part of the rope climb platform.
- 26) Unpin and fold down all fence on the rope climb platform.
- 27) Remove outer fence under the rope climb platform.
- 28) Pull pins and lower the rope climb platform-WATCH FINGERS!
- 29) Lift out the fence between the 2 tunnels and pin it into the fence directly above the nose of the trailer. Unpin and swing out and repin the fence by the rope tunnel exit.
- 30) Remove front step handrails. Place them in the rack provided by the ball crawl exit. Remove the front steps and pin into tab over rear of trailer beneath the spiral slide.
- 31) Hook the appropriate lift chain to the 32' floor.
- 32) CAUTION: THE 32' FLOOR MUST BE RAISED FIRST!!!
- A) Raising the floor requires 2 people. Be sure that the gate by the pillow bounce is closed.
- B) One person controls the winch while the other person stands on the second level by the tunnel entrance. When the rope climb stationary platform is close to the trailer, go slow and manually guide this section in easily. If it becomes caught, stop immediately, back up the winch cable a little and begin again until the the structure comes in properly.
- C) When the floor has reached a relatively vertical position and is self stationary, release the winch hook from the chain, rehook it straight out from the winch drum and pull the floor the rest of the way in.
- D) Pin the floor in place with the 2 required 5/8" pins. These pins must be keyed.
- E) Release the winch cable, let the cable out and hook it to the chain which is attached to the 28' floor.
- 33) Raise 28' floor. Pin and key into place.
- 34) Unbolt the lower spiral slide section and place over the 5th wheel. Tie it down.
- 35) Raise the rear landing gear.
- 36)

'JUNGLE of FUN'

Tear down/ fold up procedure

- 1) Deflate pillow bounce. Untie ropes on outer edge.
- 2) Remove, fold up ride top.
- 3) Put tent poles in rack over 5th wheel. The 3 poles that have 500 watt fixtures go on the top rack and the remaining poles go in the lower rack in either order.
- 4) Remove handrails from stairs to the spiral slide. Place on porch in front of the tunnels.
- 5) Remove stairs to the spiral slide platform. Place on deck of the porch for the tunnels.
- 6) Unpin, unbolt and telescope downward the 2x2 tent pole into the spiral slide center pipe.
- 7) Unpin and fold down the fence on the spiral slide platform.
- 8) Flatten balls in the ball crawl.
- 9) Unclip and lower side nets of the ball crawl. One net completely covers the balls, the other net just lays down.
- 10) Place the punching bags in the ball crawl, laying down on top of the balls.
- 11) Unattach the cable that once supported the punching bags.
- 12) Unpin and lower the fence that is directly below the net climb.
- 13) Unclip and fold in the side nets to the net climb. Remove and place into rack the 11' net climb support brace. It is racked over the 5th wheel.
- 14) Lower the net climb to the floor and hook the 3/4" rod clip to the outer support leg of the net climb platform at floor level.
- 15) Remove pipe and pipe support from lower end of the net climb.
- 16) Fold down the fence by the bumpy-bridge . It folds down right on top of the net climb itself.
- 17) Unpin, fold down and repin the exterior fence by entrance to the net climb.
- 18) Unpin and remove 'U' bracket from exterior fence and place it over the back end of the trailer.
- 19) Lower and pin fence section on top of the net climb platform.
- 20) Install the 2 lift chains.

NOTE:

The chain with small hooks is for the 28' floor
The chain with the large hooks is for the 32' floor

JUNGLE OF FUN

OPERATIONAL PROCEDURE

Two (2) play attendants:

The #1 play attendant will accept the duties as the ticket taker. They will be stationed in front of the Bounce=Around. This attendant will also have the responsibility of ensuring that all of the kids play safely in the pillow bounce and then make it safely to the top of the Rope Climb platform. Do not allow the kids to jump from the pillow bounce to the Rope Climb. They will also be responsible for the kids on the platform of the spiral slide and to those kids that need to pass through the employee gate to just play in the balls. At times this play attendant may have to climb to the top of the spiral slide platform to coax a youngster to slide down.

The #2 play attendant will station themselves in the back right hand corner of the play area near the end of the Bumpy-Bridge. From this position almost the entire play area can be reviewed easily and quickly. This play attendant will also be responsible for the kids' safety at all times. Do not allow the kids to throw the balls, dive into the balls or hang inadvertently on the nets which surround the ball crawl. Any and all loose balls must be picked up and returned to the ball crawl immediately. All play participants must be kept from backing up and moving in the wrong direction. It is not safe and it will decrease the capacity. The use of a whistle at times might be useful to get the kids' attention if it becomes necessary. Do not allow the climb down the nets as it is not safe and do not let the kids step from the spiral slide platform back to porch in front of the two tunnels.

The third play attendant scenario::

The use of a third play attendant may become necessary when the play area is rather busy. This person should be stationed at the entrance to the ball crawl. Under these circumstances it will be necessary to allow only 8 to 10 kids in the ball crawl at one time. These kids should be encouraged to pass through the balls as quickly as possible only to make room for more kids. Those kids waiting to enter the ball crawl will queue up at the bottom of the of the Tube Slide.

- C) Now unroll the ride top across the width of the play area. Locate the collars around each center pole respectively and hook the pulleys to the steel hooks on the ride top.
- D) Lace the top together working from each center pole outwards.
- E) Near the Tube Slide entrance, telescope out the two support posts from the corners of the fence. After they are pinned and secured hook the top to them accordingly and tie off.
- F) Now hook the top to the support post located in the far corner of the fence on the Rope Climb platform. This post also telescopes out of fence. Tie off.
- G) Unrack and spread out the tent poles from the rack over the 5th wheel. Each pole is numbered. The numbers are welded onto each pole, 1 through 8. The poles are placed by their number starting at the front left corner of the play area by the entrance.
- H) Hook correct tent pole through the 'eye' in the top, raise and insert into the appropriate tube in the fence. Pin and tie off. This procedure is repeated 8 times. Plug in lights to the outlets corresponding below. See diagram 1A.
- I) Raise tent top at both center poles using the pulleys. Pull it up as far as it will go. Tie off. Pin the 500 watt light fixture to each center pole. Plug them in below.
- J) Raise the tent pole out from the center of the center pipe of the spiral slide. Pin and bolt it to the fence of the spiral slide platform. Slip the top over this pole and tie off.
- K) Install the diagonal pipe brace to the aluminum tent pole that is by the tunnel entrance.
- 11) Install the fence between the two tunnels and pivot the fence closed by the rope tunnel exit. Pin.
- 12) Install the lower spiral slide section. It is stored over the 5th wheel.
 - A) Carry to front of the ride, set in close and insert the leg assembly. Line section up accurately and bolt together 4 places. This requires 4- 7/16" N.C. bolts. Tighten bolts. Check to make sure that slide section is properly blocked and leveled.
 - B) put landing platform into place at bottom of spiral slide.

9) Complete 32' floor-

- A) Raise Rop Climb platform. This step requires 2 people. This piece has a double fold in it. It is located by the Tube Slide and the Ball Crawl entrance. Fold upwards and pin with 2 - 7/16" pins to the stationary platform in the far back corner of the floor.
- B) Climb up on this platform and raise all fence and pin. Add small piece to fence assembly. It is located and racked near the entrance to the Tube Slide.
- C) Raise and hook Rope Climb to the platform erected in the previous step. Once again, make sure that the ends of the rope end up on the outside of the angle clips.
- D) Install 5/16" cable from outer fence upwards to the end fence on top of the rope climb platform. Tighten turnbuckle. Turnbuckle must be located at the bottom fence.
- E) Attach and clip on safety side nets. Both sides.
- F) Install and pin outer fence below rope climb platform. This requires 4 pin points.
- G) Install the fence piece which blocks off the Rope Climb underneath area from the Tube Slide exit and the Ball Crawl entrance.
- H) Untie the pillow bounce and spread it out. When it is inflated, tie it off on the outer side. Inside tie-downs should always remain tied.
- I) Set front steps. The steps are located under the spiral slide over the trailer axle. Pin, hold level and unscrew both attached legs until the steps are level and firm.
- J) Install handrails to the entrance steps. The handrails are located in the rack in front of the ball crawl entrance. Underside of each rail is marked R or L respectively.
- K) Pivot up front fences and pin to stair handrails using the 2 snapper pins that were used to hang the stair handrails in their rack.
- L) Bolt on height sign to the right front fence.

10) Erect ride top.

- A) Erect the 2 aluminum poles. Plain end pole stands in the tube by the tunnel entrance. The square ended pole stands and pins into slot by the tunnel exits. Attach the 2 pulleys to each center pole at this time.
- B) Unroll top lengthwise of the trailer. Be sure to get the front part of the top towards the front of the play area. There is definitely a front and a back to this element.

- K) Bolt on the 3 net climb support brackets. They bolt onto the face of the net climb platform. These brackets require 6- 3/8" wing nuts N.C.
- L) Unclip side nets from net climb, raise and hook entire net climb. Make sure that the outer edges of the rope, are placed outside of the 2 outer brackets used in step K.
- M) Raise and pin cross fence that is directly under the net climb. It pins to the fenced raised by the bumpy bridge raised in step H.
- N) Install 'U' frame. It is located over the back end of the trailer and it is inserted into the fence in the punching bag area. Once in, pivot out the short brace and pin to the net climb top platform.
- O) Install net climb cross support. It can be found over the 5th wheel in its' own rack. This step will require 2 people. Support brace is approx. 11' long, is 1x3 rectangular tubing and is pre stressed to span the width of the floor. Installation requires one pin or large nail.
Hand in from outside of the unit, slip it in under net climb. Raise and hook. One end hangs on to the trailer frame above the ball crawl; the outside end pins to the 'U' bracket installed in step U.
- P) From cross support, raise and pin vertical leg. This leg will support safety side nets of net climb.
- Q) Install 5/16th safety net cable to fence at bottom of net climb on left hand side (turnbuckle at this end) and hook into fence on top of net climb platform. Be sure to place cable in vertical support raised in step P. Tighten turnbuckle.
- R) Raise and hook safety side nets.
- S) Raise and hook cable for punching bags. It is permanently attached to corner of ball crawl and it secures to 'U' bracket installed in step U. Tighten turnbuckle.
- T) Install punching bags. Alternate colors. 3 of them hang from cable added in the previous step; other 3 hang from cross brace added in step O. Tighten hardware with pliers.
- U) Raise and pin turnbuckle that is- pinned to the trailer frame. It pins to the net climb platform. Tighten turnbuckle.
- V) Tighten turnbuckle on cable added in step F.

- G) Level floor, set all floor legs.
- H) Attach and hang bally cloths' around entire unit. This requires 4 separate pieces; 1 for each floor, 1 for the 5th wheel and 1 for the back end of the trailer.
- 5) Remove all four winch bracket support pipes. Release tension at the 2 turnbuckles on 2 of the supports. Pull keys and pins, remove pipes. Return pins and keys to pipes and place pipes under play area on the ground.
- 6) Remove punching bags from the ball crawl. Place them temporarily on the outer edge of the 28' floor.
- 7) Raise and hook side nets on both sides of the ball crawl using the 's' hooks, hook to the 7/16" rod. Make sure corners of nets are hooked into corners of frame.

EITHER SIDE CAN BE COMPLETED AT THIS TIME

- 8) Complete 28' floor.
 - A) Climb to the top of the spiral slide. Unpin and fold up and pin fence around slide top platform.
 - B) Unpin and pivot up fences on top of net climb landing.
 - C) Set stairs from net climb landing to slide platform. This will require 2 people. The stair is located nearby on top of tunnel landing next to slide. Lift stairs over the handrail and set into place. If the pins on the stairs do not line up with the matching holes, adjust main floor accordingly with hydraulic jack.
 - D) Set in handrails to stairs. They are located where the stairs were stowed.
 - E) Add diagonal brace from net climb landing to the 2x2 sign post on the back end of the unit. This acts as a stiffener and counteracts the force of those climbing up the net.
 - F) Add 5/16" cable to corner of handrail of net climb platform to the same 2x2 corner post. Do not tighten turnbuckle until unit is completely erected.
 - G) Unpin, fold up and pin fence located by entrance to net climb.
 - H) Fold up fence that is laying down near the bumpy bridge and is laying down on top of the net climb.
 - I) Bolt down pipe support for the bottom part of the net climb. This requires 4 ½" wing nuts. This occurs at floor level and in the middle of the net climb entrance.
 - J) Insert 1½" pipe underneath net climb and resting in it's support bracket installed in the previous step. Hook pipe on both ends in the appropriate key slot. This will support the fence raised in step H.

FABRIC 1

FABRIC 2

FABRIC 3

YARDS OR QUANTITY 100 yds75 yds800 ydsTYPE OF MATERIAL 13-10P Chrome13-10P ChromeMechrote 9x9COLOR F. GreenYellowDark GreenCONTROL NUMBER 2315-E2320-ELot #2DATE PROCESSED 6/13/836/9/836/14/83CUSTOMER ORDER NUMBER 15906/16120SEE JOB NUMBER 9462SEE INVOICE NUMBER

MANUFACTURED COMPONENTS:

One Ride Top (per customers drawings)

LOCATION OR KNOWN USE AREAS:

Sold To: Patrick Boyle
c/o Butler Amusements
1145 N. 13th St.
San Jose, CA 95112

GENERAL NOTES:

Paint information: Touch-up or re-paint
Fuller-O'Brien

Equipment Green #313-21
School Bus Yellow #313-26

Carpet Glue Information:

HENRY - 263 All weather outdoor carpet
adhesive

JUNGLE OF FUN

Light bulb- Fastner- and Tool Requirements

Fastners:

- 31 ea. Snapper pins 3/8 dia. 2½" long
- 5 ea. 7/16"x2 NC Bolts. Nuts/washers (spiral slide)
- 3 ea. 3/8"x 5" bolts with key
- 6 ea. 3/8"x 2½" bolts with key
- 10 ea. mouse keys
- 4 ea. ½-20 wing nuts

Tools:

- 5/8" deep socket (½" drive)
- 11/16" box end wrench
- ½" drive ratchet
- hammer (claw)
- pliers
- 10" crescent wrench
- 5 ton hydraulic jack/ handle
- level

Light Bulbs:

- 190 ea. 11 watt (clear)
- 6 ea. 6 ft. flourescent bulbs
- 1 ea. 8 ft. flourescent bulb
- 4 ea. 150 watt flood lights
- 7 ea. 500 watt quartz bulbs

Maintenance cont'd.

Check all of the light bulbs and their sockets for looseness from vibration. Allow no sockets to remain empty as this could be hazardous.

Lubricate with WD-40 the threads on the two 1" dia. threaded turnbuckles which support the winch.

Clean out the ball crawl periodically. Do not allow it to acquire garbage and do not allow a quantity of broken balls to remain in the ball crawl.

Keep the punching bags clean at all times. Do not allow them to appear dirty. Clean with 409 or equal.

Vacuum the carpet periodically. Intervals depend on quantity of traffic and ground conditions.

Keep pillow bounce clean both inside and out. Use 409 and do not allow this soap to build up in the threads.

The slides can be cleaned successfully with Bon-Ami.

REMEMBER-- A CLEAN PLAY AREA IS A HAPPY PLAY AREA!!!

JUNGLE OF FUN

MAINTENANCE PROGRAM

When the play area is in operation it will be necessary to check the following items daily.

- 1) The legs which support the floors are blocked firmly not allowing the floors to sag.
- 2) Check the hardware which attach to the punching bags. They must remain tight. Use pliers. Check the 3/16" cables for fraying. Replace if necessary immediately.
- 3) The brackets which bolt to the net climb platform and hold up the Net Climb should be kept tight at all times.
- 4) The turnbuckle which connects from the 2nd level of the trailer frame to the corner of the net climb platform. It must be kept tight at all times.
- 5) The zipper on the pillow bounce should be kept only 3/4 closed at all times. This decreases the firmness of the bounce floor.
- 6) The 3/4" steel rod which support the 2 rope climbs must be kept in and down in their respective angle clips.
- 7) The 1/2" which supports the length of the Topsy-Tunnel must be kept secured to the two cross members. Do not allow this cable to wear through the two 'U' brackets. This occuring will eause the Tunnel to fall and perhaps damage the winch brake.

NOTE:

Inspect the winch cable every single time that it is used. Check for fraying and other signs of deterioration and replace the cable immediately. Do not use a winch cable which appears to be worn and therfor unsafe.

- 35) Raise the rear landing gear.
- 36) Remove the blocks out from under the middle of the trailer.
- 37) Hook up the tractor.

ADDENDUM A:

When the play area is fully erected and ready to be operated, remove the eye hook from the floor in the punching bag area. Replace when the unit is being folded up. Make sure the nut is properly tight, use lock washer.