

TO THE OWNER AND OPERATOR

MFG: MAJESTIC
NAME: MUSIC EXPRESS
Type: NON-KIDDIE

This manual contains information concerning the operation maintenance and safety of your new MAJESTIC MUSIK EXPRESS building. It should be carefully read before attempting to operate you MUSIK EXPRESS. You will find many helpful pointers which will assist you in obtaining the performance in which it was designed for.

MAJESTIC INC.

Majestic Inc. makes note of warranty or claims arising from the use of this manual and the owner operator assumes complete responsibility for any decisions made or actions taken based on information obtained from using this booklet.

BE CAREFUL



This symbol is used throughout this manual whenever personal safety is involved. Take time to be careful for you and the safety of you patrons.

IMPROVEMENTS

Majestic Inc. is continually striving to improve its products and therefore reserves the right to make improvements when it becomes practical and feasible to do so, without incurring any obligations or responsibility to make changes or additions to Musik Expresses sold previously.

TABLE OF CONTENTS

INTRODUCTION
TABLE OF CONTENTS
WARRANTY
SAFETY PRECAUTIONS
SAFETY INFORMATION
SET-UP PROCEEDURE
TRAILER RACKING
ELECTRICAL CHAIN HOIST
TEST EQUIPMENT
HYDRAULIC FLUID
BIDIRECTIONAL DRIVE ROWAN MOTORS
RESERVOIRS
OPERATOR SERVICE CHARTS AND COMMENTS

WARRANTY

DATE OF DELIVERY _____
DATE OF MANUFACTURE _____
RIDE SERIAL NUMBER _____
MODEL NUMBER _____
NUMBER OF CARS _____
TYPES OF CARS _____
COLOR OF CANVAS _____

1. All parts manufactured by seller are held under warranty for a period of 6 months (except tires, hydraulics, electrical, battery, ect. which comes under each manufacturer's own warranty).
2. The purchaser will pay for any service charge for making service calls and/or transporting the equipment to the place where the warranty work is done.
3. This warranty does not cover depreciation or damage caused by normal wear, accident, improper maintenance, improper protection in storage or improper use. Normal maintenance and service replacement cost will be borne by the purchaser.
4. Seller shall not be liable for loss, damage or expenses directly or indirectly arising from improper use of the ride.
5. Under these conditions all such parts and materials will be invoiced to the customer upon shipment by us of required replacement parts. Full credit will be allowed on such parts subject to the following conditions:
 - A) if they are returned to us, freight PREPAID within a period of fifteen (15) days after date of invoice.
 - B) after our examination of said parts they provide to our satisfaction that such defects did exist. This is our sole obligation under the warranty

MUSIK EXPRESS SAFETY PRECAUTIONS

Prior to each day of operation of the Musik Express, the owner/operator MUST do the following:

1. Inspect under every tub all three pins and safety keys.
2. Inspect every drive wheel and running wheel. All wheels should have NO play on the shaft.
3. Inspect all connections on the aluminum drive track.
 - A) Check for nuts and bolts to be tight.
 - B) Safety keys on bolts.
4. Inspect every lap bar to see that they work properly. They must:
 - A) Latch down securely
 - B) Not raise when ride is running
 - C) All safety placards are visible
5. Center hub should be inspected for:
 - A) All sweep pins secure and safety keyed
 - B) Safety cable in place
6. Inspect all pins on outboard sweeps that secure cross steel members under tubs.
7. Exit gates and entrance gates installed and working properly.
8. Inspect all steps and ramps for proper blocking.
9. Inspect under ride for:
 - A) Individuals, workers, maintenance personnel, ect.
 - B) Loose articles, clothing, purses, ect.
 - C) Blocking is all secure.
10. Always test or run the ride each day without customers to check for proper speed. Recommended speed is 14 RPM MAX.

MAJESTIC SALES, INC. 4536 SR 7 NEW WATERFORD, OHIO 44445
PHONE 216-457-2447 FAX 216-457-7490

SAFETY INFORMATION

PLEASE TAKE TIME TO READ ALL SAFETY INFORMATION

Unsafe operating practices and improper use of this equipment on the part of the operator can result in injuries. Observe the following safety precautions.

1. Proper blocking for trailer and purlings is essential for safe operation. NOTE: when setting on soft or sandy ground always use a plywood base for blocking. 3/4 plywood base recommended for trailer is 1' x 2'. 1' x 1' plywood base recommended for purlings. Always block purling where feet are on purling.
2. Never unhook tractor from ride UNTIL all air is out of air bags.
3. When attaching or removing tractor from trailer NEVER fully extend hydraulic cylinders, always use mechanical jacks for extended periods.
4. Proper size safety keys and all pins is important.

A. Post	E. Extension Arms
B. Rafters	F. Scenery
C. Purlings	G. Ramps and Walkways
D. Racking	H. Sweep Arms
5. NEVER have customers run to or from the Musik Express Ride.
NOTE: Aluminum walkways are slippery when wet.
6. NEVER operate Musik Express without everyone having the safety bar in the down position.
7. Always operate Musik Express at a safe speed.
Recommended speed is 14 RPM MAX.
8. The Musik Express building trailer is 53'-0" long, 13'-5-1/2" in height: extreme caution is needed when negotiating corners and low overpasses.
9. A) All Majestic Musik Express rides currently being manufactured are equipped with maxi trailer brakes. It is still advisable to block trailer wheels when unit is parked.
B) Block wheel of sweeps during installation and dismantling.
10. Walking on scenery is not recommended.
11. After ride is erected a visual inspection is needed to insure all pins and safety keys are in place. (NOTE:

Ride must use all proper pins with safety key in their proper locations).

12. To insure safety, the hydraulic switch located with the hydraulic pump should be in the off position while ride is in operation.
13. Gates must be in use while ride is in operation.
14. NEVER have operator ride on back of cars while ride is in operation.
15. Extreme Caution is needed in high wind when handling scenery or canvas.
16. NEVER stand on sweeps when ride is in operation.
17. NEVER work in or around center when ride is in operation unless power has been turned off.
18. NEVER operate ride until all previous passengers have left the ride and exit gate has closed completely.
19. Safety is an ongoing process, every operator must use their own judgement for safety due to constant changes in conditions. We at Majestic are always receptive to better ways to improve the safety of our Musik Express rides.

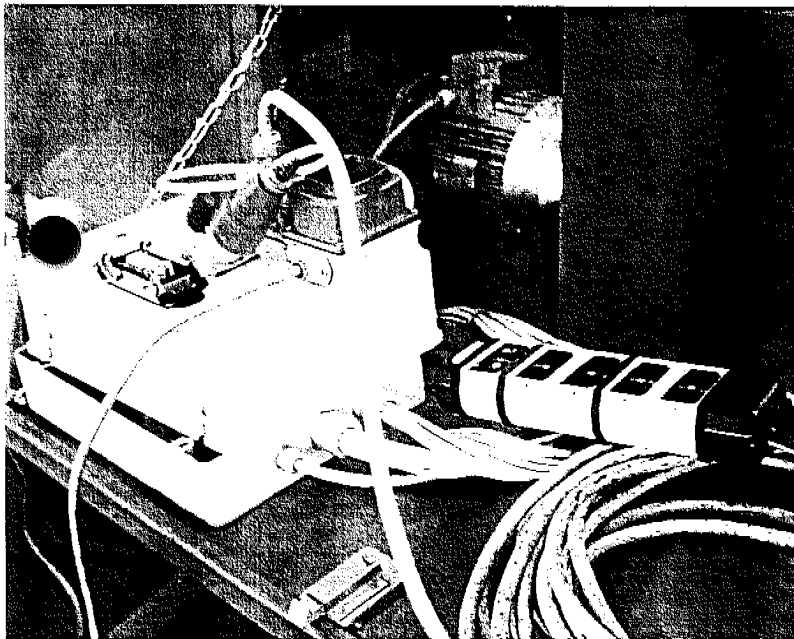
THANK-YOU

SET-UP PROCEDURE AND MAINTENANCE SCHEDULE

1. Pull ride on location and choose a site as level as possible.
2. Before removing tractor, open air valve on rear of trailer and wait until all air is exhausted from air bags.
3. Removing tractor: It is important to raise the front mechanical jacks until weight is 95% off tractor springs then remove tractor.
4. Leveling: Place a builders level on the trailers gooseneck and rear trailer frame. Using the hydraulic jacks raise trailer to 42" high measuring from ground to top of trailer deck (this dimension may vary due to levelness of ground). Level ride in an even plane.

Fig. 1

Fig. 2



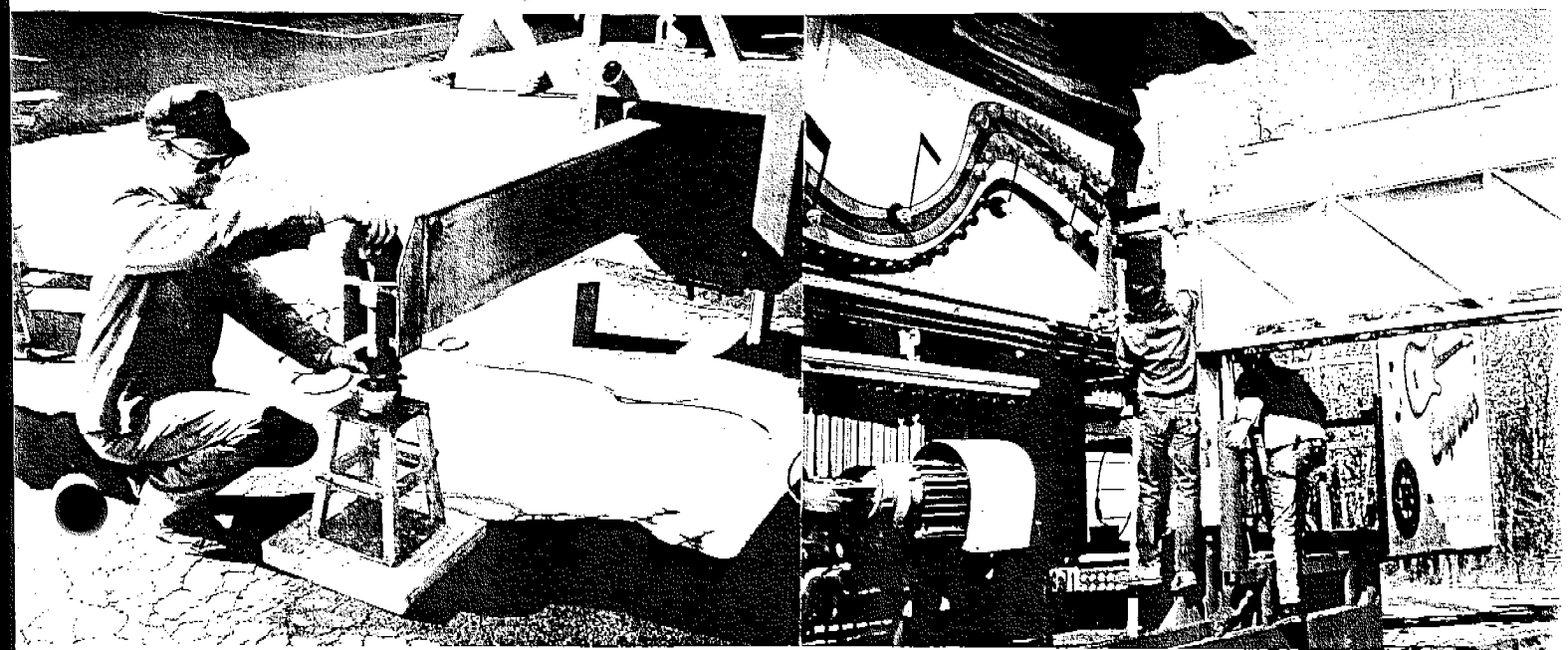
5. Manually pull out each of the four (4) mechanical stabilizer jacks. Pin and safety key each in place as shown in Fig. 2. Locate stand with blocking and screw ball joint into stand cup (there must be plenty of grease on ball end). Turn jam nut down on threads until "hand tight" against stabilizer arm as shown in Fig. 3. Using turning bar, insert into hole just above ball joint. Turn clockwise until completely tight.
6. Remove all excessive components that may be in the way of

setting up the scenery (fence, purlings, walkway supports).

7. A) Using main hydraulic cylinders, raise top of canvas section approx. two feet (2') and then raise scenery hydraulics approx. six inches (6"). This is to give clearance for setting up scenery.
- B) Remove safety pins holding scenery in place, rotate side scenery on hinge to be perpendicular with trailer. At this point place removable section in place as shown in Fig. 4. Repeat with rear of ride.

Fig. 3

Fig. 4



8. A) Using the nylon rope provided, pull front and rear scenery out and into position as shown in Fig. 5. NOTE: Operator setting up ride must use caution when pulling out front and rear scenery. Binding or high winds could cause damage.
- B) Pin sides and end scenery together as shown in Fig 5A.
- C) Pin and safety key scenery cross bracing into place. NOTE: At this point, height of scenery should be readily accessible with a ten foot (10') ladder.
9. A) Remove safety pin from scenery and gently lower until in place as shown in Fig. 6. EXTREME CAUTION SHOULD BE TAKEN IN HIGH WINDS. △
- B) Lift front of scenery and assemble stabilizing bars in place.
- C) Assemble sign bracket as shown in Fig.7. Slide sign onto extension bracket arms and pin in place.
- D) Carefully lift sign up and into place as shown in Fig. 8. Install cross bracing at all appropriate locations around scenery. Pin and safety key in place as shown in Fig. 8A.
10. Rotate star light scenery out from trailer and fasten into place. Make sure each arm of the star is fastened securely

and that all pins and safety keys are in place.

Fig. 5

Fig. 5A

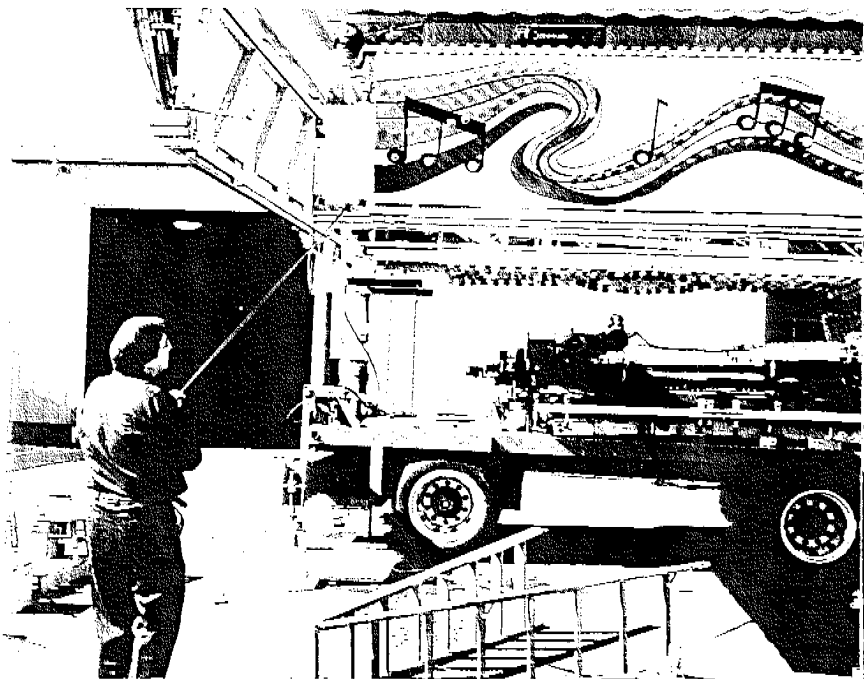


Fig. 6

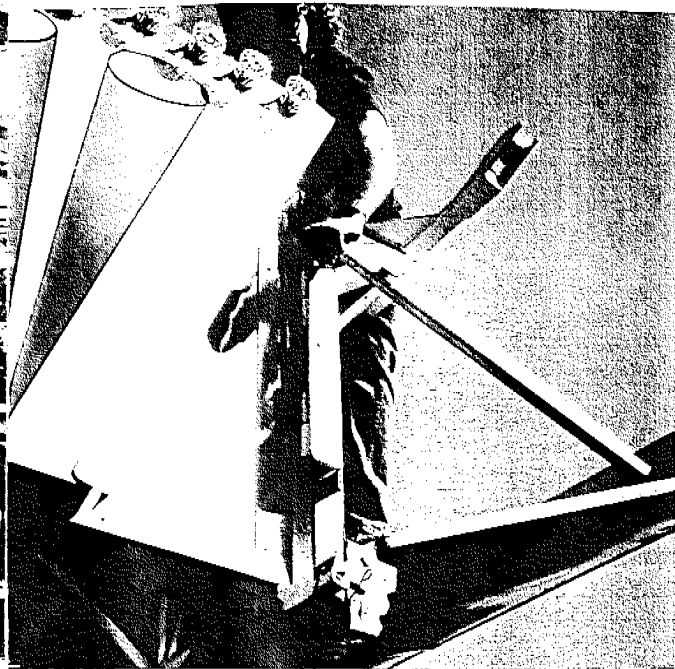
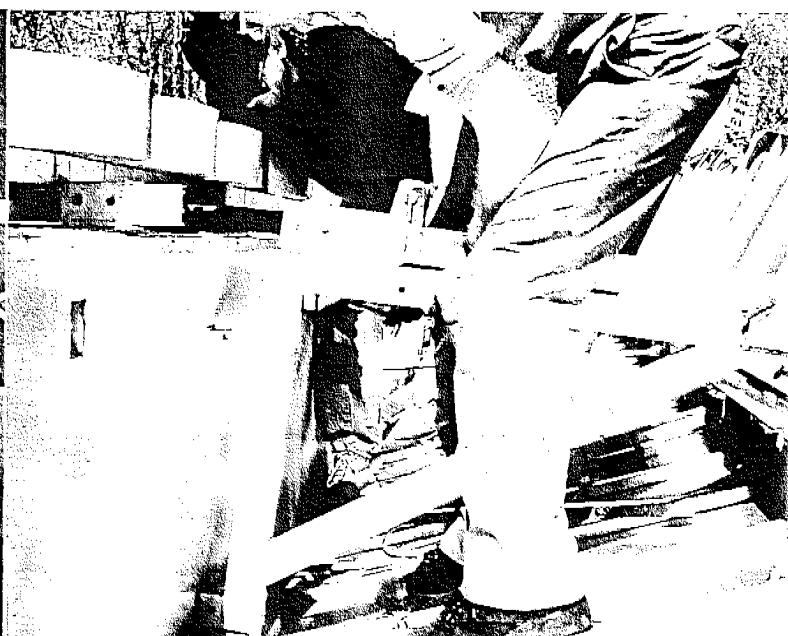
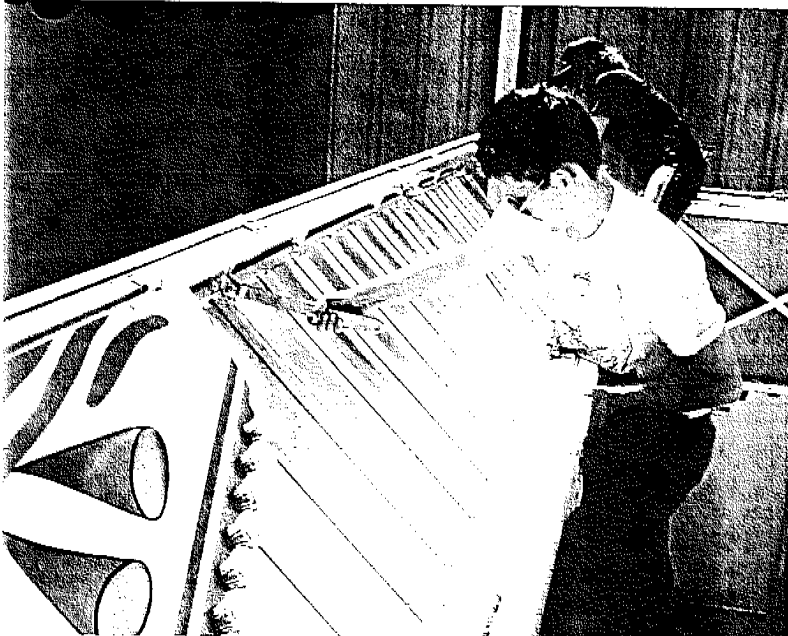


Fig. 7



11. A) Assemble front and rear purlins, use proper blocking to assure that each section of purlin is on the same plane as the trailer as shown in Fig. 10.
- B) Install each walkway support in it's proper holder then pin and safety key in place.

Fig. 8

Fig. 8A

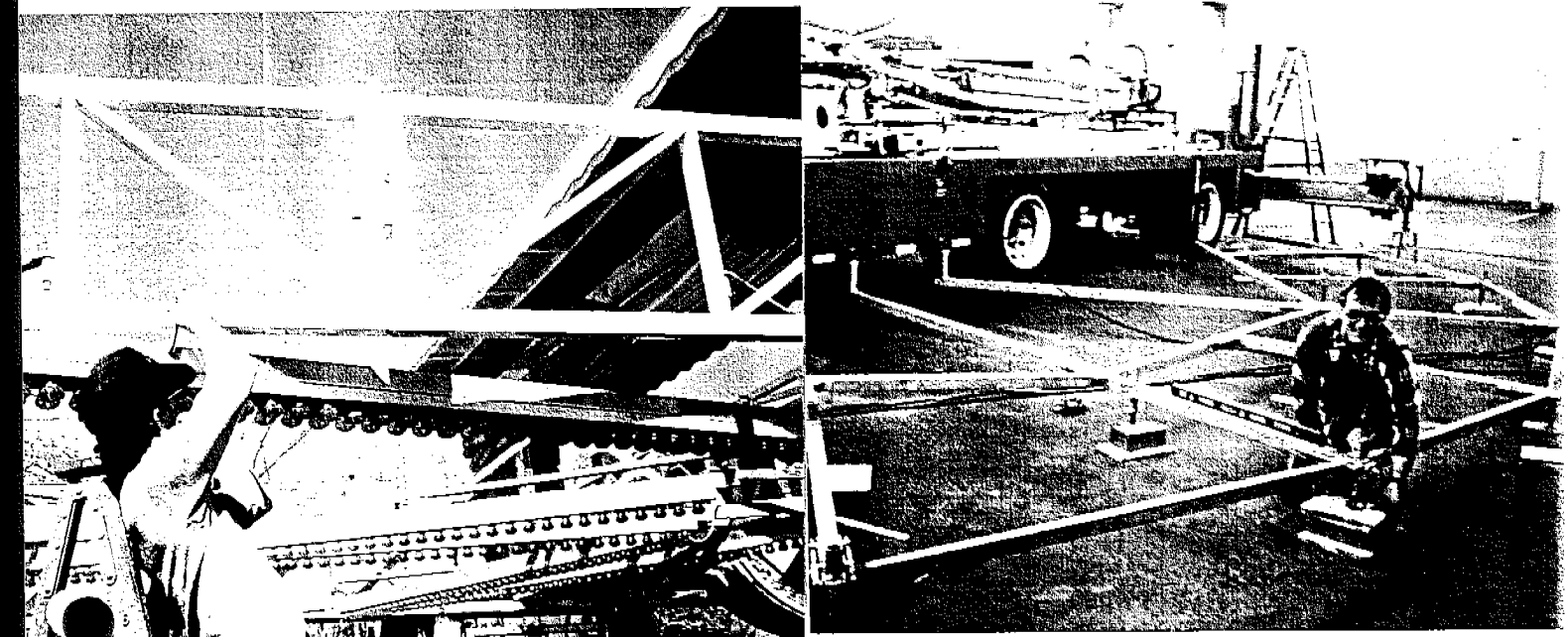


- C) Install walkway support spreaders between supports.
- D) Install cross braces between walkway supports

- 12. A) Unroll canvas guidewires and attach to brackets that are shown in Fig. 8. Raise canvas roof to maximum height then pin stabilizer bars into place as shown in Fig. 10A.
- B) Extend canvas to it's full length as shown in Fig. 11.

Fig. 9

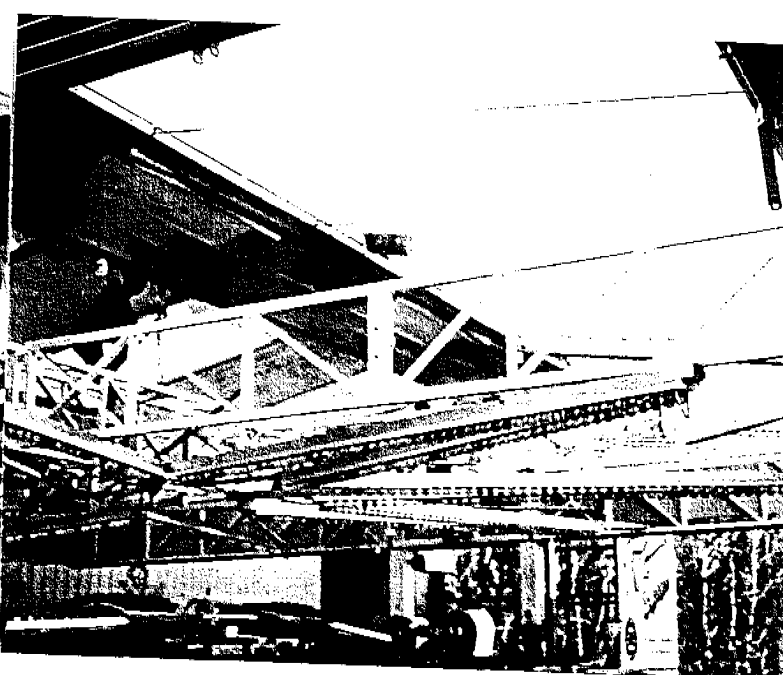
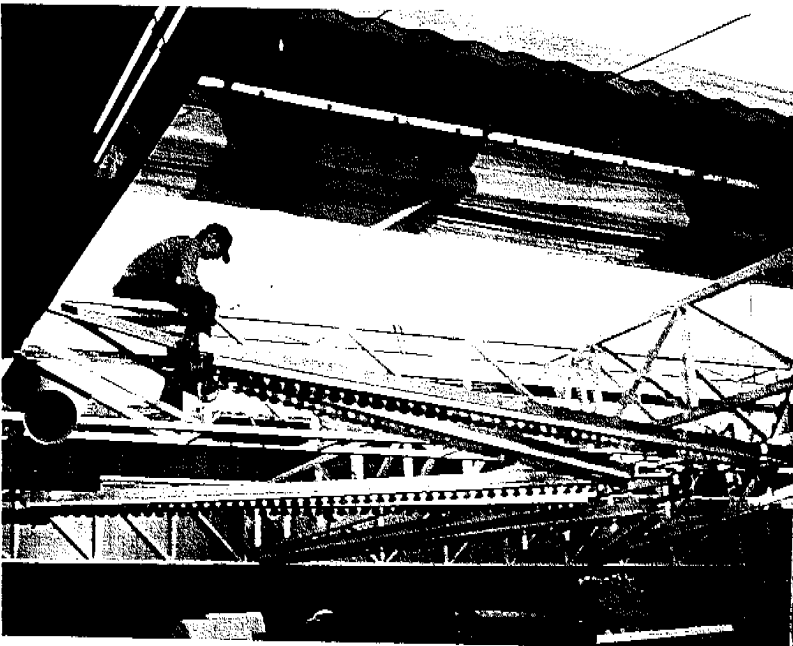
Fig. 10



13. Assemble track to walkway support. Bolt sections of track together. Each connection must use the maximum quantity of bolts possible and each bolt must use one lock washer behind the nuts.
14. Assemble the entrance and exit steps. Assure that each brace and step are firmly seated or pinned in place.
15. ASSEMBLY OF THE WALKWAY
Begin with the walkway section numbered 6/7 and proceeding counter-clockwise until complete.

Fig. 10A

Fig. 11



16. A) Using the sweeps dolly as shown in Fig. 12, roll sweep onto the track and into place.
B) Remove dolly (blocking may be needed under the sweep wheel to raise the dolly enough to remove it from the sweep).
C) Pin sweep into it's proper place as shown in Fig. 13 (if needed, oil pin lightly to make insertion easier. Never grind or file).
D) Block wheel to keep from putting undo stress on pin.
E) Upon pinning of second sweep, remove sweep spreaders from rack and position as shown in Fig. 14. Repeat steps A, B, C, and D until all sweeps and spreaders are in place.
D) Remove blocking from wheel of sweep.
17. Insert spreader, hold down pin thru holder and polyurathane sleeve. Safety key in place as shown in Fig. 15. Repeat on all areas where spreaders are attached.

Fig. 12

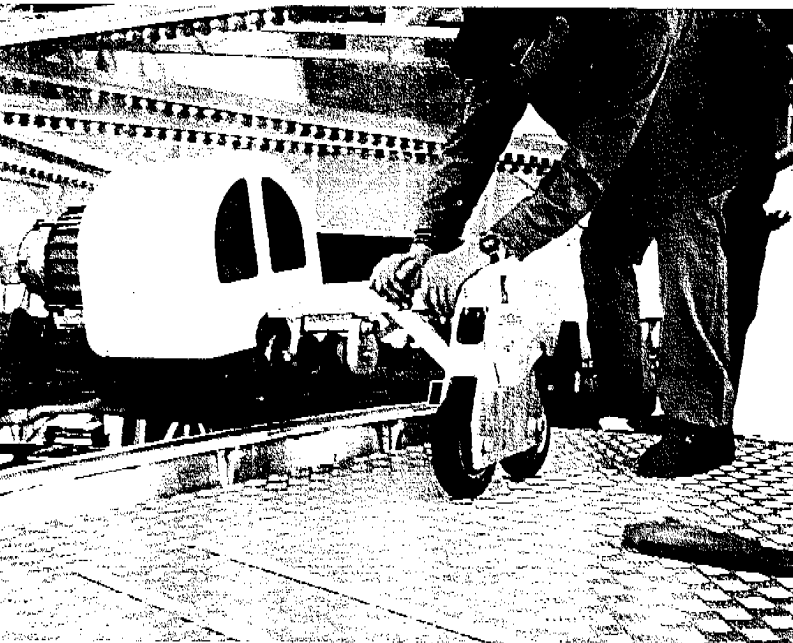


Fig. 13

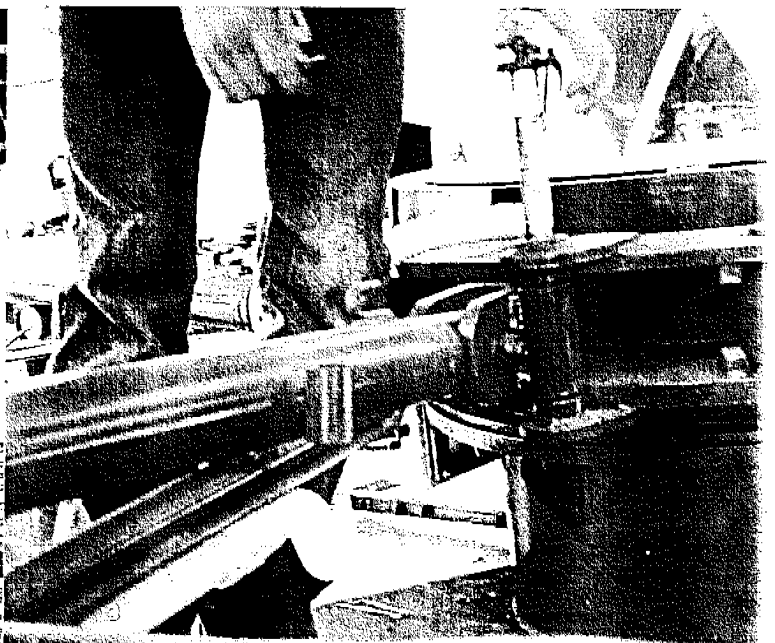


Fig. 14

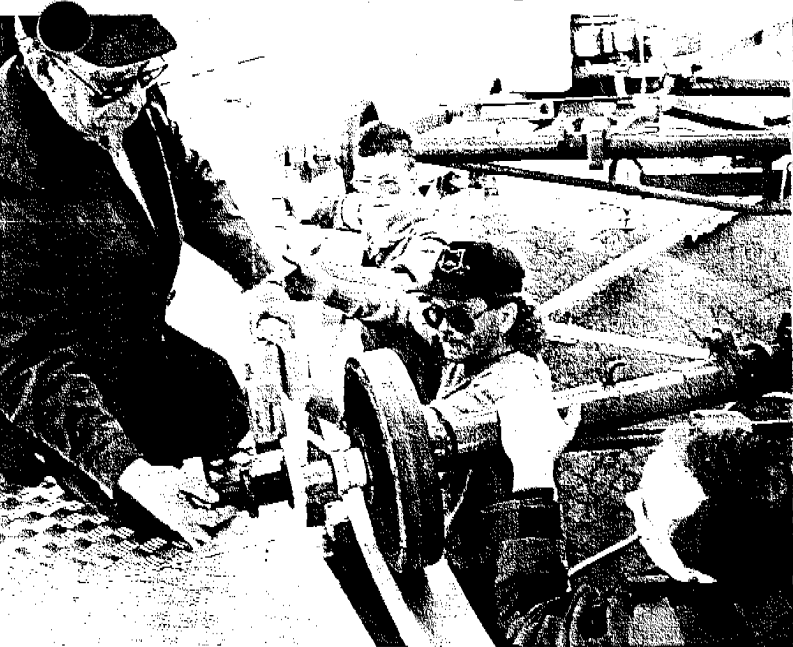
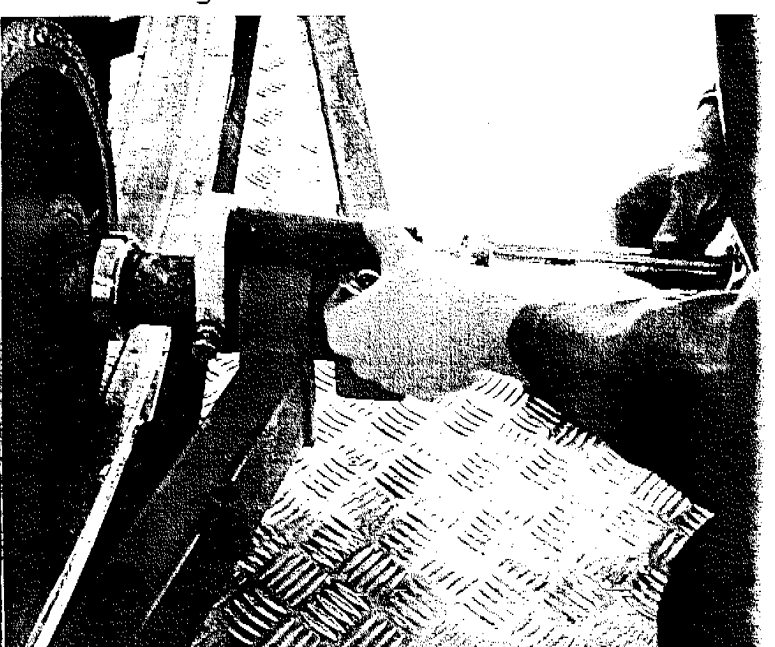


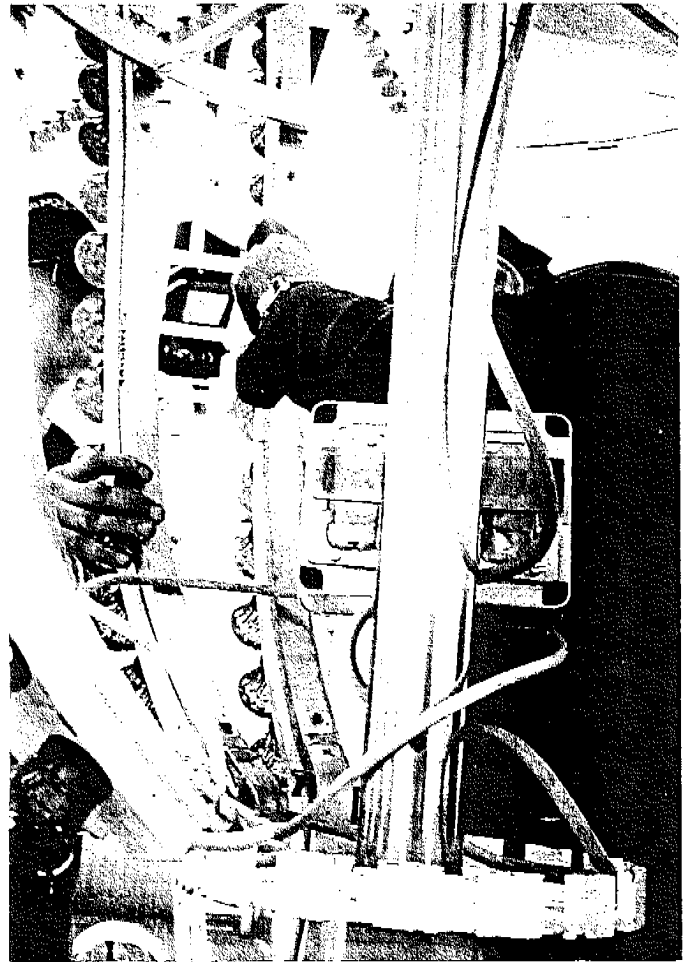
Fig. 15



18. Assemble center light fountain as shown in Fig. 16. Install light rows and connect wiring to electrical box shown. Repeat until all light rows are in place.
19. Make a visual inspection of all scenery electrical connections. If any are not connected, do so at this time.

20. A) Raise scenery structure. Raise scenery until the lower hole clearly shows on the four large guide posts.
- B) Insert the four pins that have a ground flat surface on one edge. Lower scenery until the four main posts are touching pin flats.
- C) Insert four large pins thru the post's upper holes and safety key in place.
21. A) Carefully remove cars from racks using overhead crane. (See Chain Hoist Manual)
- B) Place cars on corresponding sweep (number stamped on sweep is directly in relation to number on car).
- C) Pin and safety key in place repeat until all cars are in place.

Fig. 16



22. Assemble control house, slide back and side frames on the track and hinge pin together in place. Add roof and pin securely to side and rear frames.
23. Install fence. Start with number 6/7 and continue clockwise around back side of ride. Pin and safety key each piece in place as you proceed from front of ride, including entrance and exit, begin with number 20 then pin and safety key each fence section. Attach all canvas skirting in their proper places.
24. Visually inspect after erection of ride. This must be done to ensure that following are completed:
- A) Proper blocking is used
 - B) All pins and safety keys are in place
 - C) All bolts/nut fasteners are secure
 - D) Ride stabilizer arms described in section #5 are securely in place (ground settling)
 - E) Structural integrity of the entire building is within

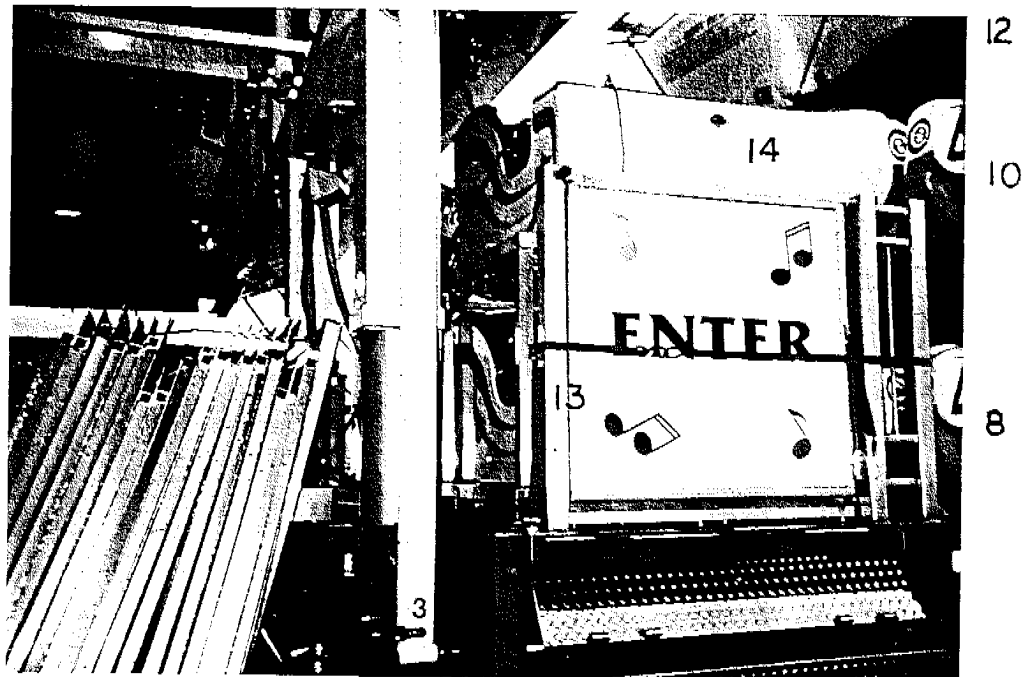
regulations set forth by ASTM Standards on Amusement
Rides and Devices as sponsored by ASTM committee F-24 on
Amusement Rides and Devices. Fourth Edition 1992
P.C.N. 03-624092-47

TRAILER RACKING FOR MUSIK EXPRESS

1st Rack all Tubs as shown in photo. Before racking last 2 cars you must install the steel X Bracing for support and strength.



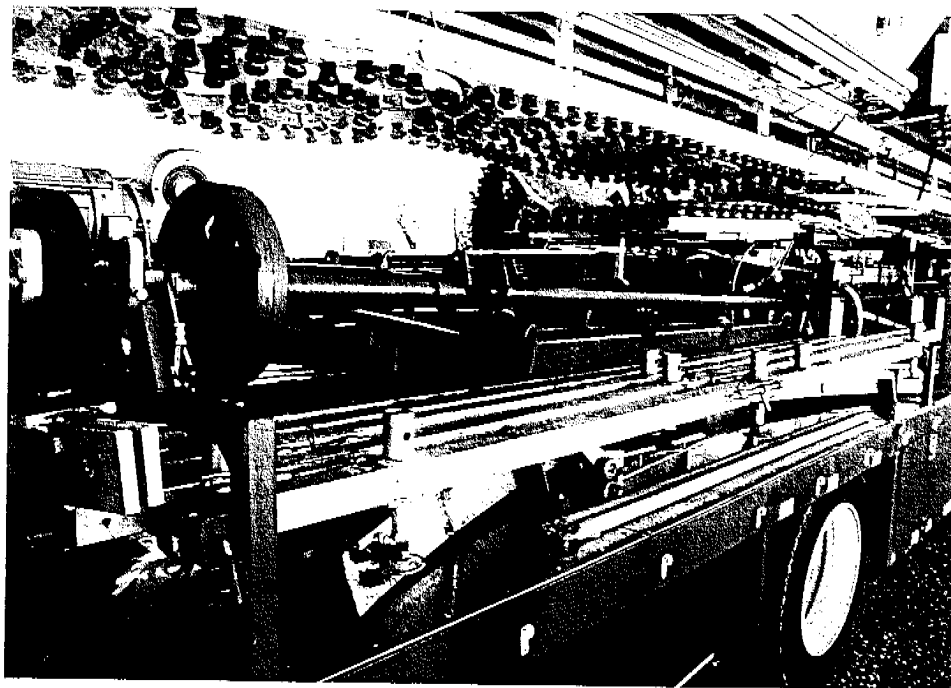
After all cars are racked, remove crane rail. You can not lower roof with crane rail in position.



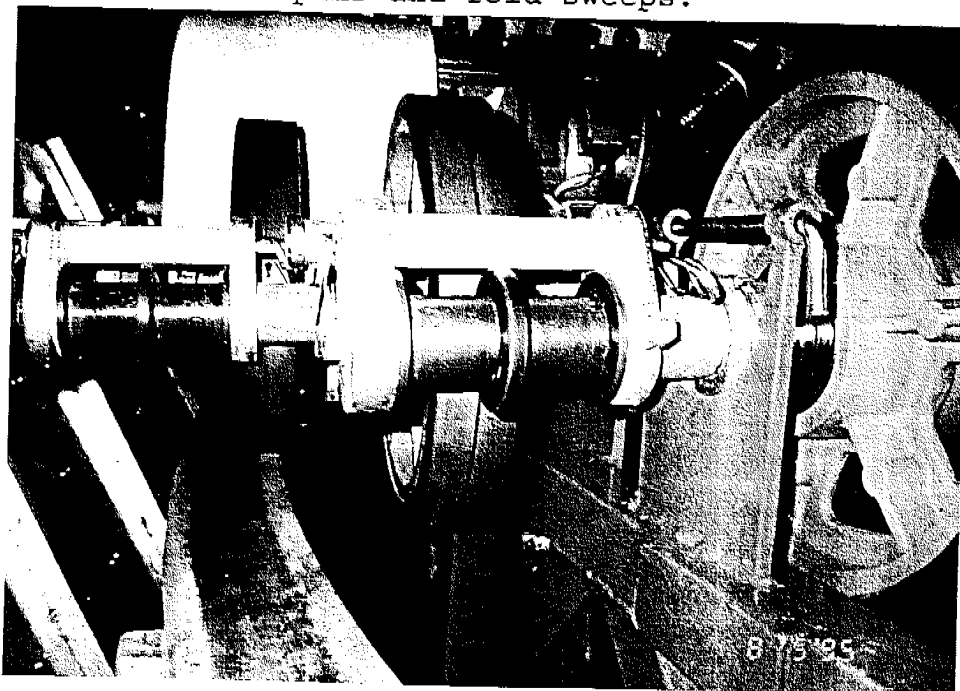
MAJESTIC SALES, INC. 4536 SR 7 NEW WATERFORD, OH 44445
Phone 216-457-2447 Fax 216-457-7490

TRAILER RACKING FOR MUSIK EXPRESS

2nd After all cars are racked, position sweep number 7 toward gooseneck pin and secure, number 14 Sweep toward axle end.



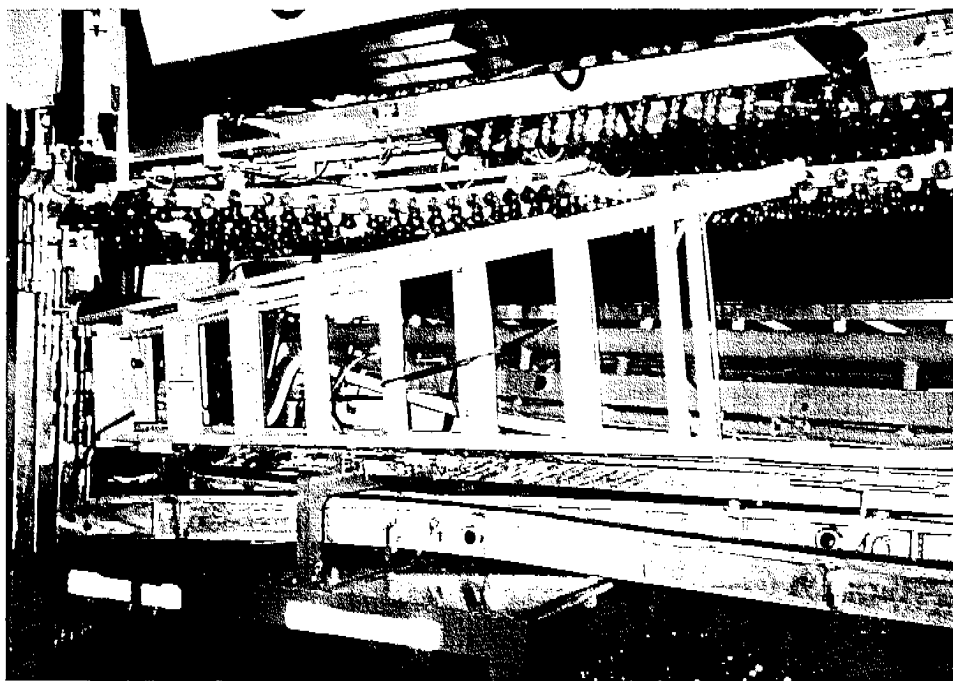
3rd Install all 4 U brackets for sweep supports remove sweep spreader. Pull pins and fold sweeps.



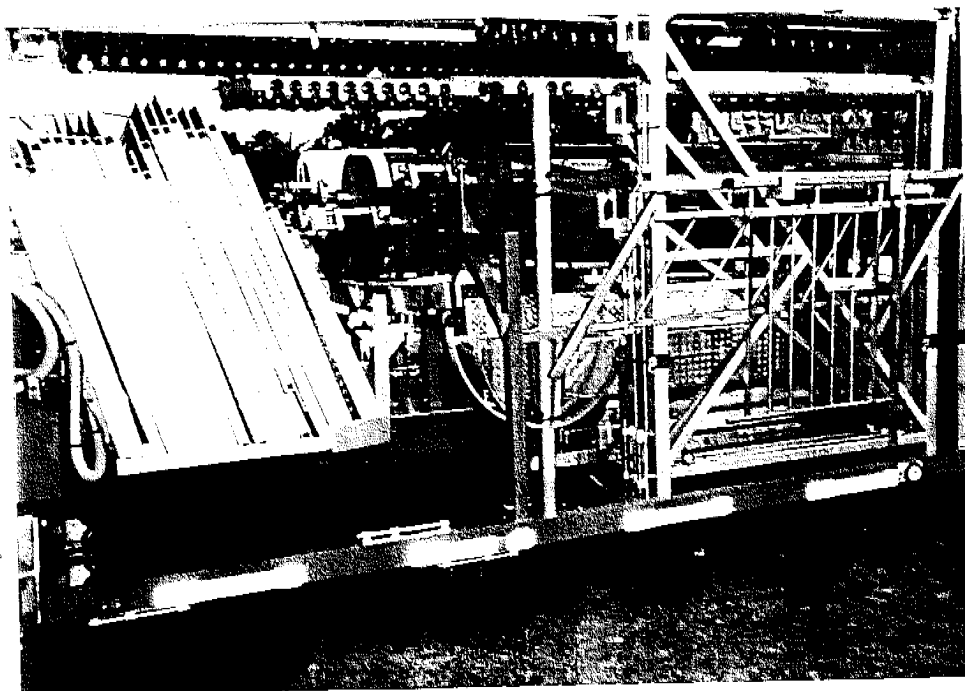
MAJESTIC SALES, INC. 4536 SR 7 NEW WATERFORD, OH 44445
Phone 216-457-2447 Fax 216-457-7490

TRAILER RACKING FOR MUSIK EXPRESS

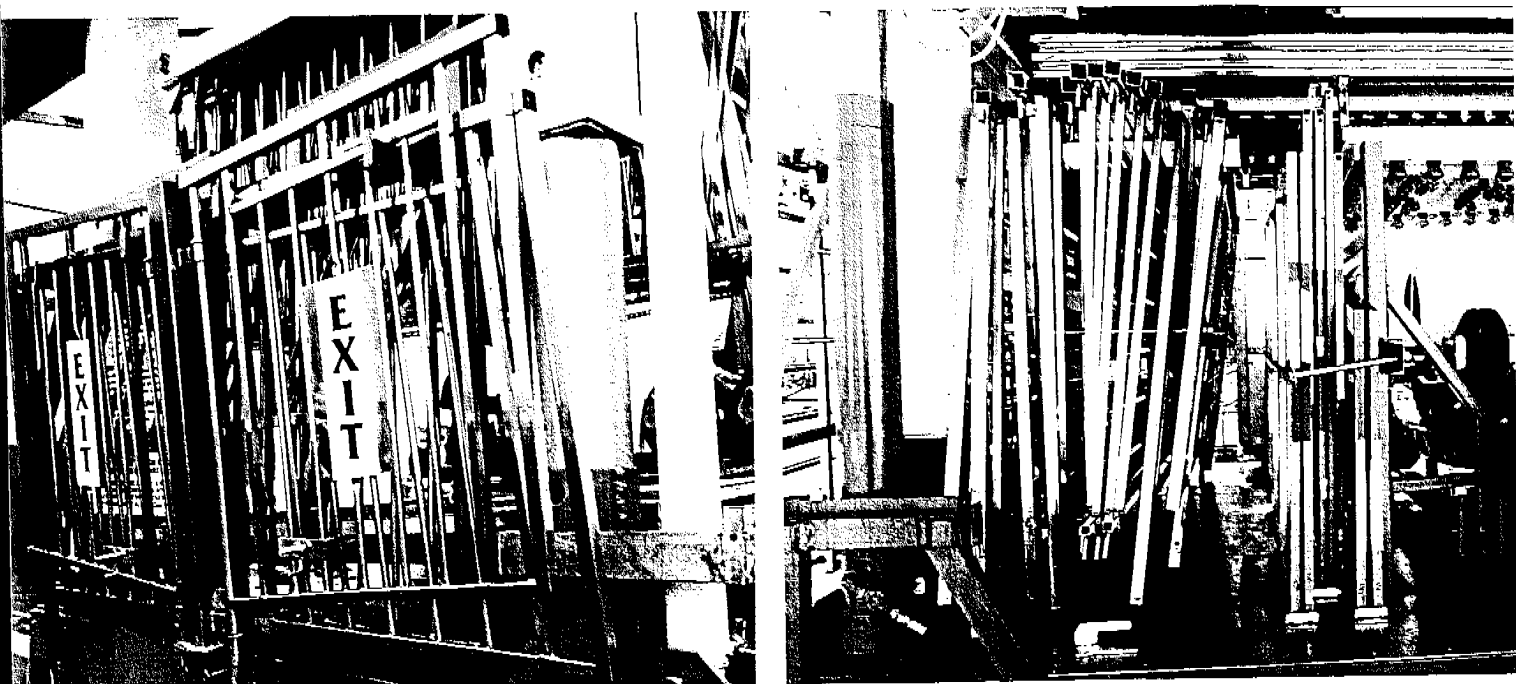
4th Unbolt aluminum drive track. Rack all track with corresponding numbers welded on steel supports.



5th Rack center light fountain as shown in photo.



6th At this point with the CRANE RAIL REMOVED from ceiling.
Pull all of the pins lower roof to a point so all fences and
painted front panels can be reached.



7th Fold and pin lighted star to center of ride.

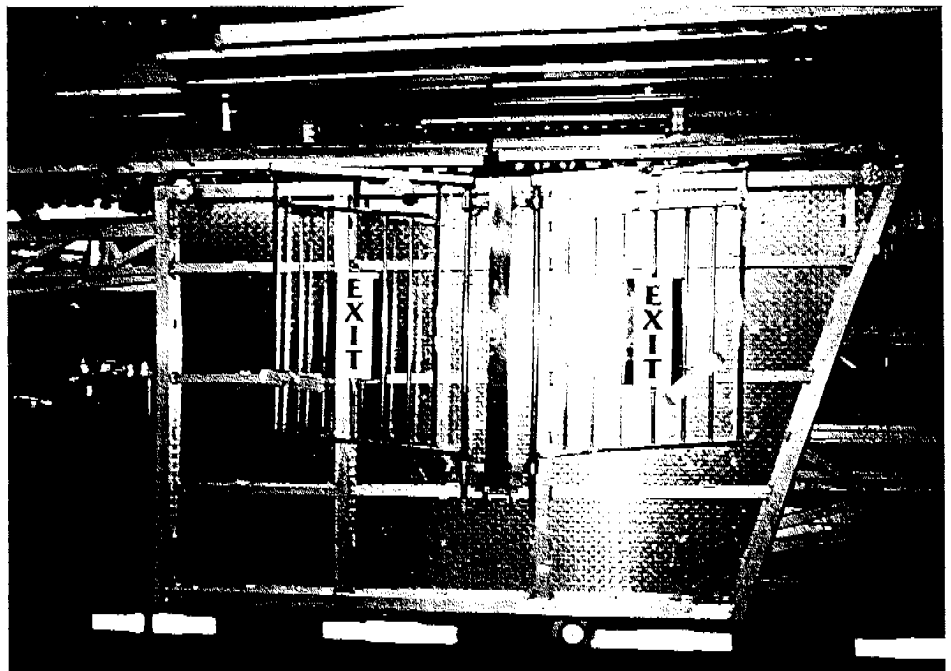


MAJESTIC SALES, INC. 4536 SR 7 NEW WATERFORD, OH 44445
Phone 216-457-2447 Fax 216-457-7490

8th All footboards can now be racked. Place aluminum rack into position and stand up all footboards (largest ones first).



9th Rack entrance and exit steps as shown. Ramp platforms to be positioned upright at approximately center of trailer as shown.



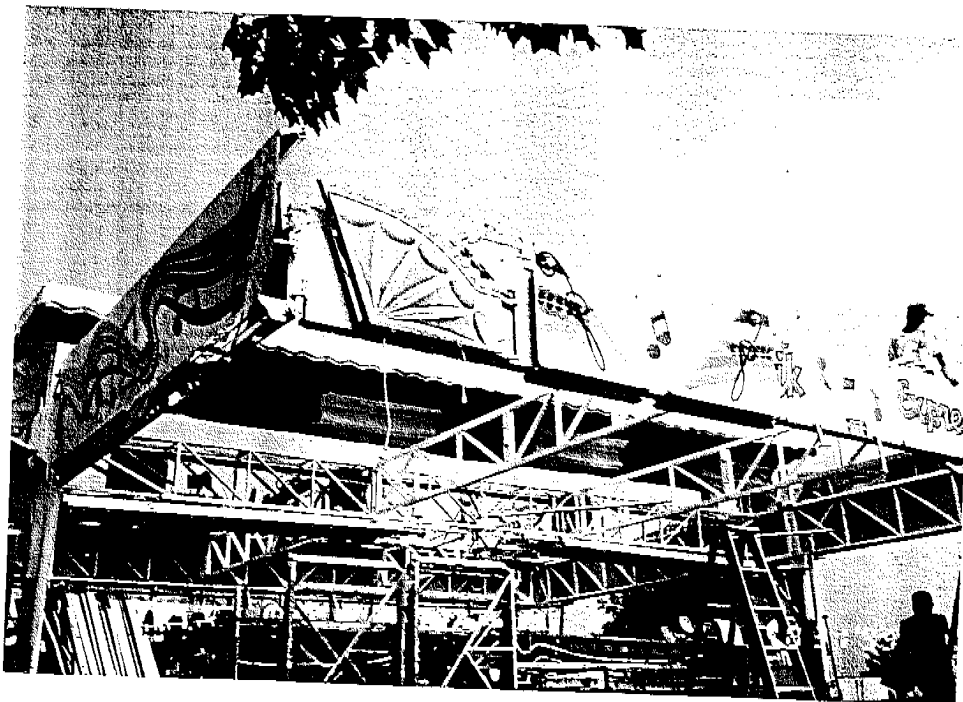
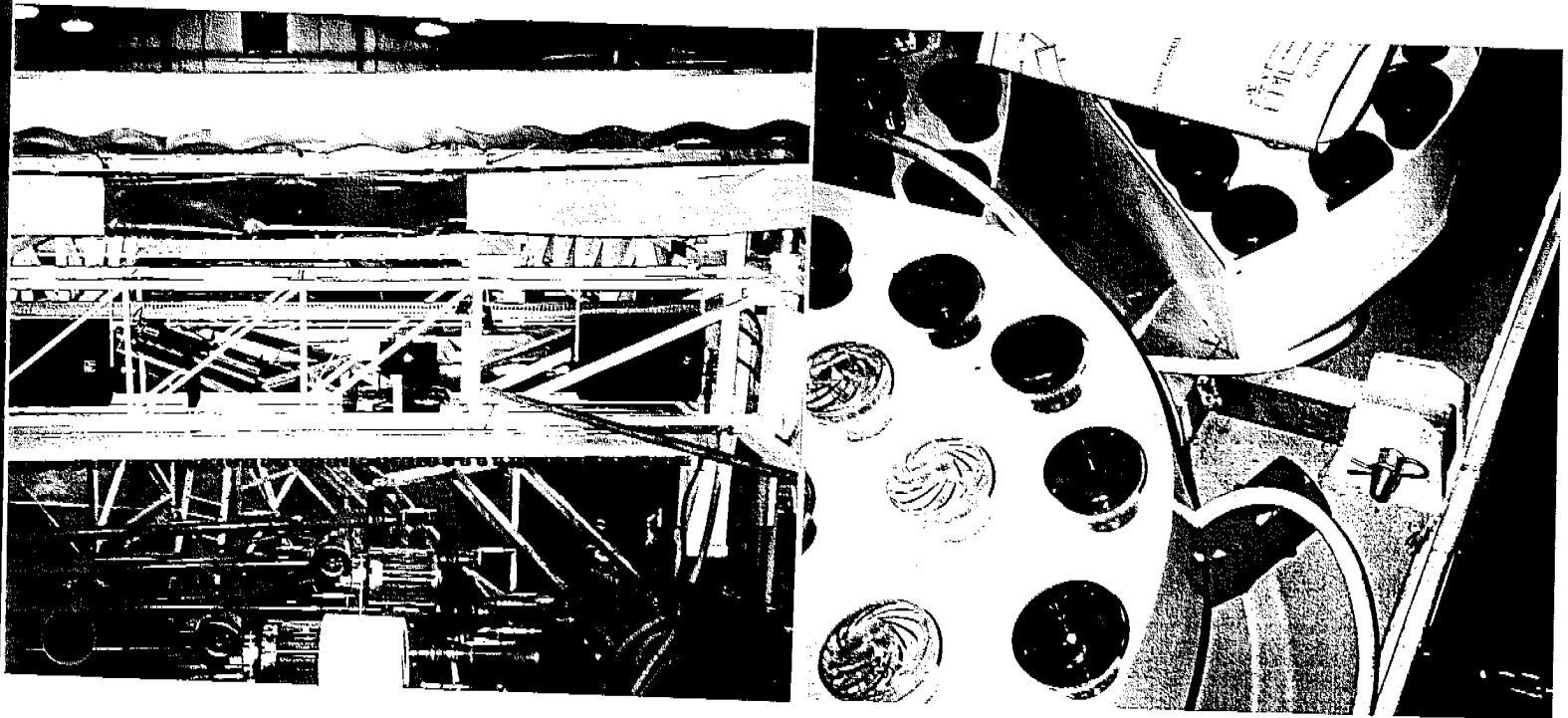
MAJESTIC SALES, INC. 4536 SR 7 NEW WATERFORD, OHIO 44445
Phone 216-457-2447 Fax 216-457-7490

TRAILER RACKING FOR MUSIK EXPRESS

10th

Folding entire roof.

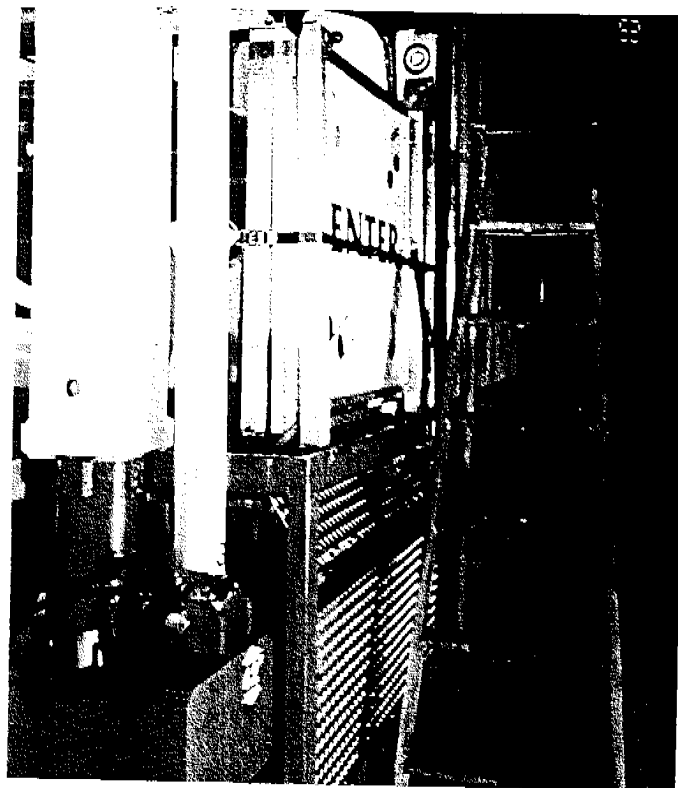
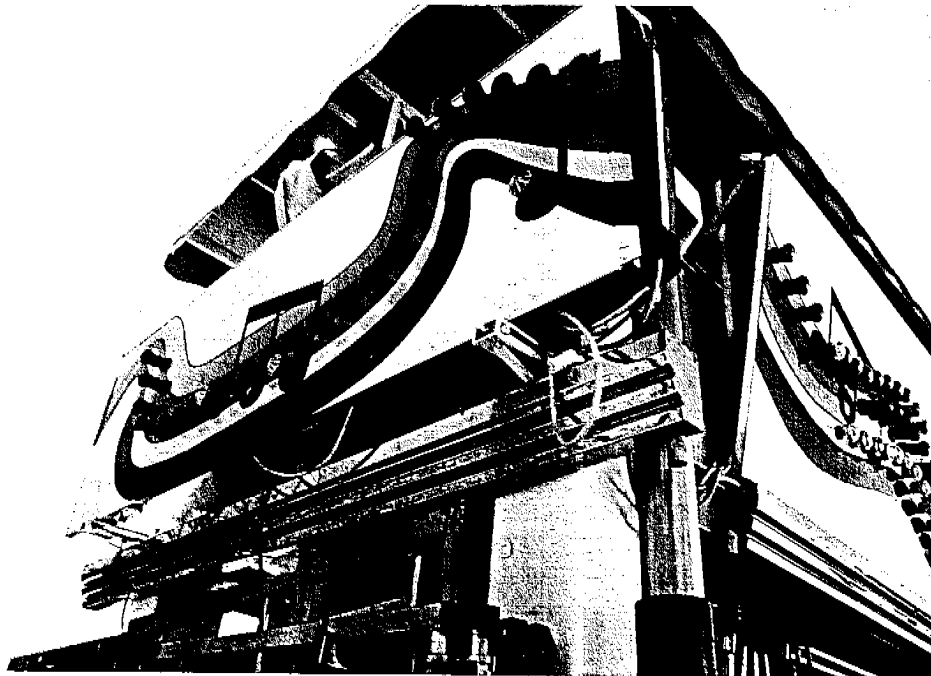
Roll up canvas first. Disconnect all steel cables and place them on top of canvas. Lower the sign and pin. Remove and rack on rear panels 3 large corners and starbursts.



TRAILER RACKING FOR MUSIK EXPRESS

11th

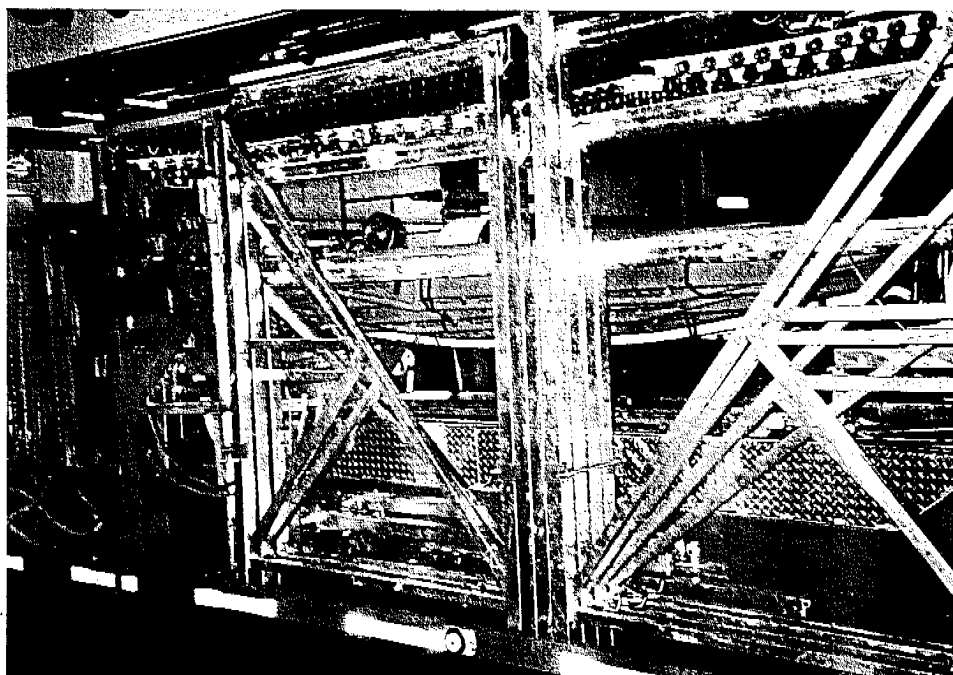
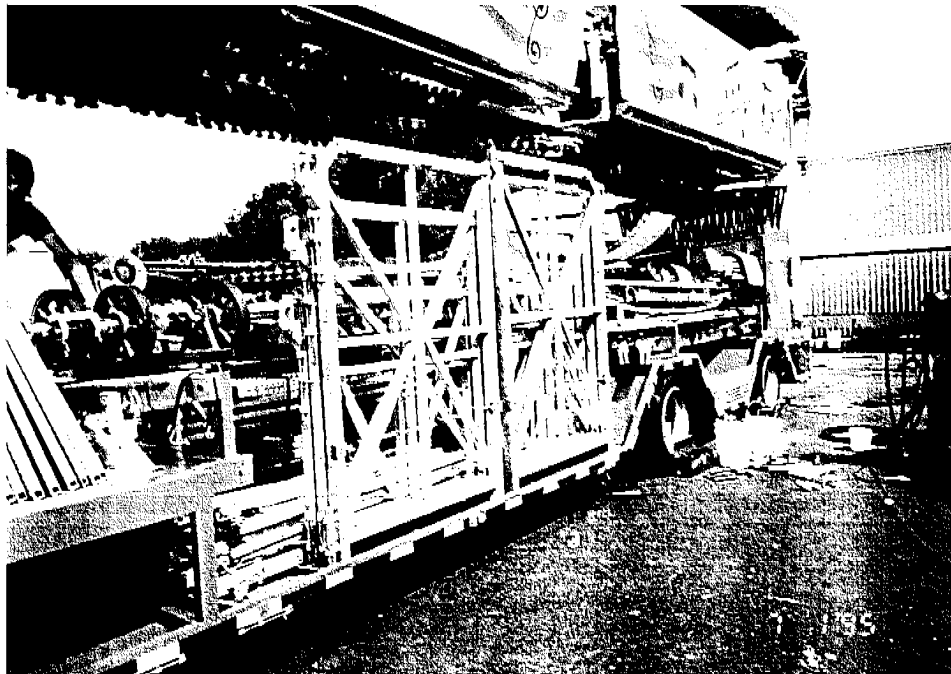
Fold front and back scenery then lower top until all posts touch steel blocks on base of column.



MAJESTIC SALES, INC. 4536 SR 7 NEW WATERFORD, OH 44445
Phone 216-457-2447 Fax 216-457-7490

12th

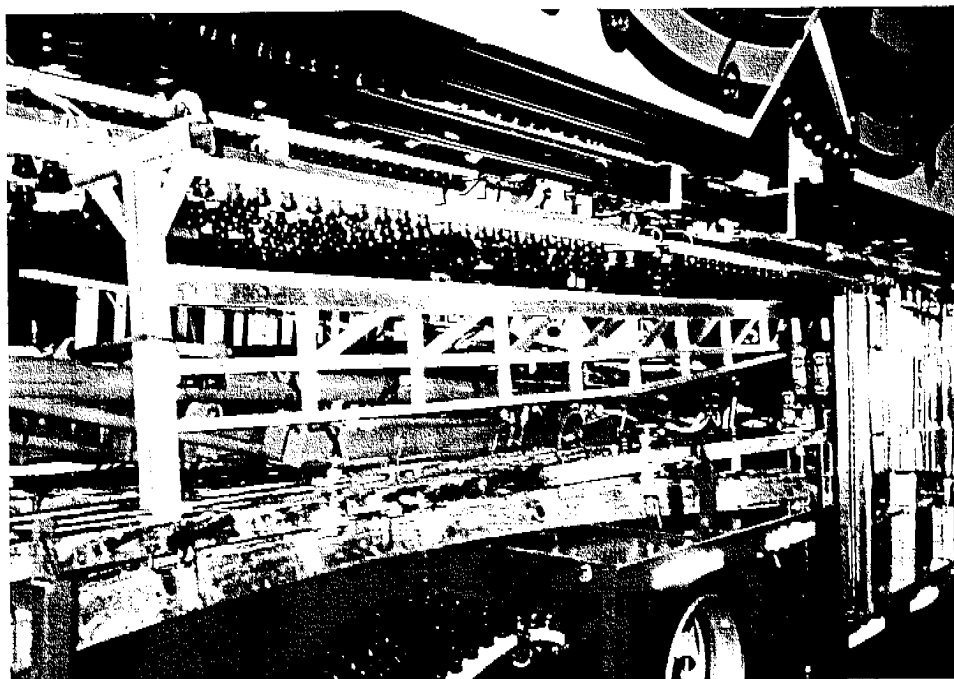
All uprights and steel base can be placed in position. All long purling at rear of trailer. IMPORTANT ALL TALL UPRIGHTS MUST BE IN THE PROPER POSITION. Because damage could occur when lowering the roof.



MAJESTIC SALES, INC. 4536 SR 7 NEW WATERFORD, OHIO 44445
Phone 216-457-2447 Fax 216-457-7490

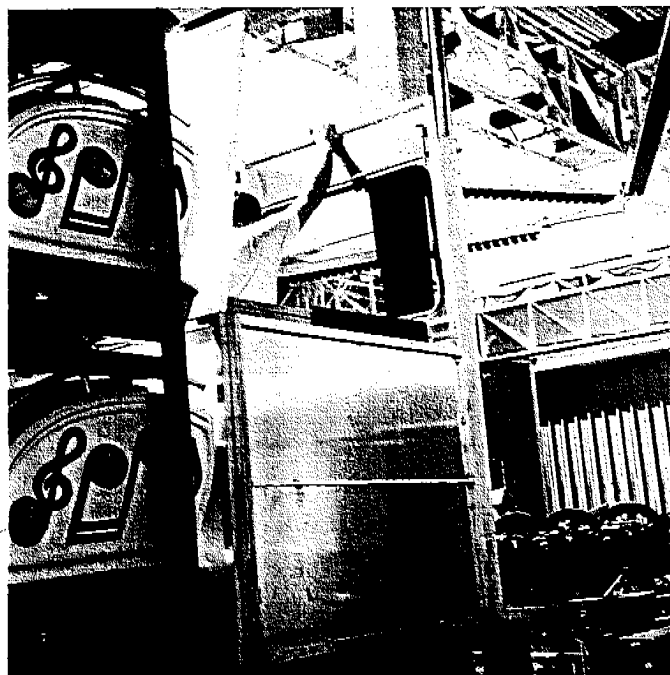
13th CRANE RAIL RACKING

As shown in the photo, crane rail is racked on passenger side of trailer over the steel purlings. Make sure all pins and safety keys are attached before transit.



14th CONTROL BOOTH RACKING

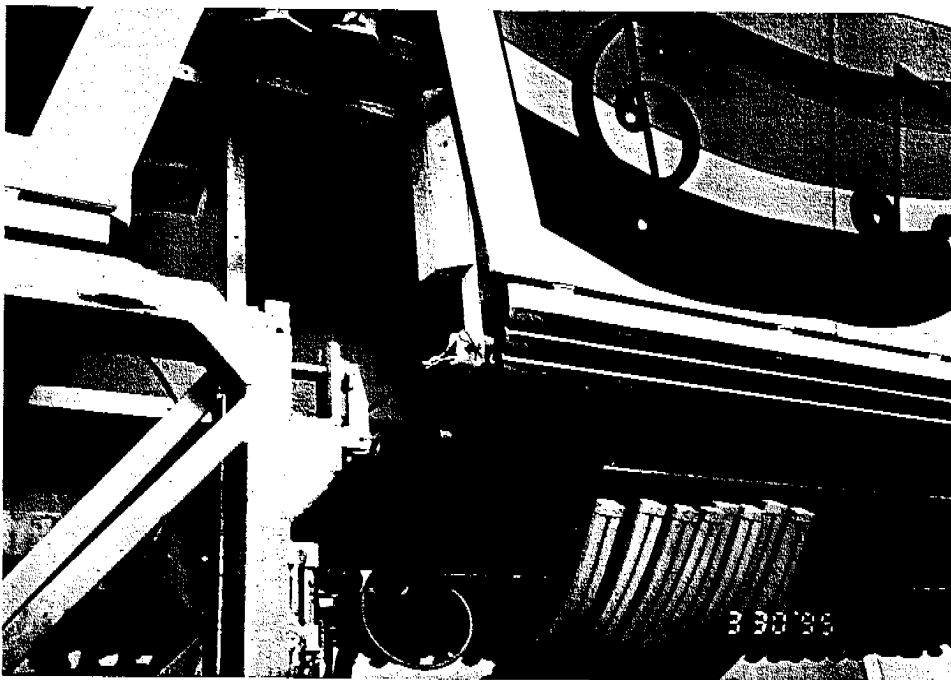
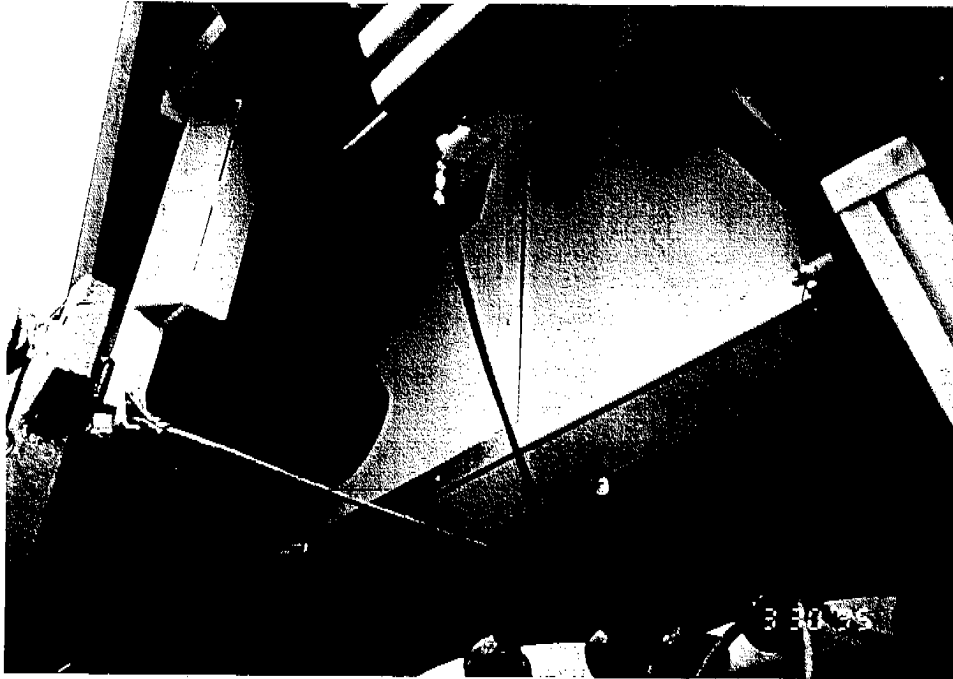
Remove doors and roof. Disassemble, fold and pin rear stationary section. Remove sides, fold and rack along with doors and roof in center of trailer.



MAJESTIC SALES, INC. 4536 SR 7 NEW WATERFORD, OHIO 44445
Phone 216-457-2447 Fax 216-457-7490

15th VERY CRITICAL

Prior to transit of Musik Express, both 5/16" x 8' safety cables must be attached to all 4 swing out rafters. This is a back-up safety requirment if the steel brackets would fail. Attach as shown in both photos.



MAJESTIC SALES, INC. 4536 SR 7 NEW WATERFORD, OHIO 44445
Phone 216-457-2447 Fax 216-457-7490

Lopez Engineering STRUCTURAL CONSULTING

616 Broadway
P.O. Box 455
Davisburg, MI 48350
Phone (810) 634-0444
Fax (810) 634-6646

Date: March 22, 1995

Job No: 95080

Attn. Neil Cashman
Bureau of Amusement Rides
2301 N. Cameron St.
Harrisburg, PA 17117

RE: Musik Express

Dear Mr. Cashman,

Our firm was contacted by Vince Kudler of Majestic Manufacturing in Ohio to review the specifications of the above mentioned amusement ride and to confirm the ride conforms to ASTM Standards. The ride was manufactured by Majestic Manufacturing P.O. Box 128, 4536 R.7, New Waterford, OH 44445. It consists of cars rotating in a circular motion on a track. The specifications for the ride were submitted to us for the our reviewing purpose.

The ride and the structural frame is structurally sound and is capable of supporting the loads that will be imposed on them.

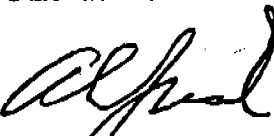
After reviewing the specifications it is evident that they conform to the ASTM Standards. Safety of the ride is also dependent on proper set-up and operator control of the number of persons on the ride at any on time.

If you have any further questions please feel free to call.

Sincerely,

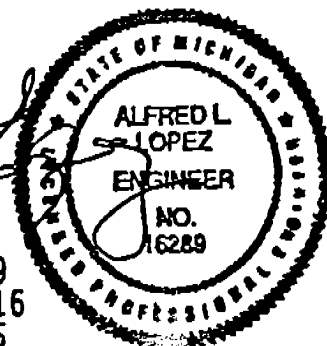


Michael P. Newkirk



Alfred Lopez P.E.

MICHIGAN REG. 16289
MINNESOTA REG. 21316
COLORADO REG. 20015
OHIO REG. E-45750
KENTUCKY REG. 17752





ORIGINATORS OF THE SCOOTER™

TO WHOM IT MAY CONCERN,

RECOMMENDED RIDER HEIGHT FOR THE MUSIK EXPRESS IS AS
FOLLOWS:

52" MINIMUM RIDER HEIGHT WITHOUT BEING ACCOMPANIED BY
AN ADULT

42" MINIMUM - MUST BE ACCOMPANIED BY AN ADULT

NOTE: THE ABOVE HEIGHTS ARE FOR TUBS EQUIPPED WITH FULLY
FUNCTIONAL LAP BARS

MAJESTIC MANUFACTURING, INC.



P.O. BOX 128, 4536 S. R. 7 - NEW WATERFORD, OHIO 45324
216/457-2447 OR 457-7280 • FAX 216/457-7280



SERVICE ON MUSIK EXPRESS TUBS AND SWEEPS

[illegible]

SERVICE ON MUSIK EXPRESS

[illegible]

[illegible]

Majestic Manufacturing, Inc.

4536 State Route# 7 New Waterford, Ohio 44445
Phone 216-457-2447 - Fax 216-457-7280

RECOMMENDED HYDRAULIC OIL

BRAND

BP
Castrol
Chevron
Esso
Fina
Gulf
Mobil
Sun Oil C

Texaco

FOR LAP BAR CYLINDER

BP Energol HLP 32
HYSPIN AWS 32
RPM EP Hydraulic Oil 32
Nuto H 32
Fina hydran 32
Harmony 32 AW
Mobil D.T.E. 24
Sunvis 816 (ISO 32)
Sunvis 811 (ISO 22)
Rando Oil HD A-32
Rando Oil HD AZ-32

FOR HYDRAULIC SYSTEM

BP Energol HLP 46
HYSPIN AWS 46
RPM EP Hydraulic Oil 46
Nuto H 46
Fina Hydran 46
Harmony 46 AW
Mobil D.T.E. 25
Sunvis 821 (ISO 46)

Rando Oil HD B-46

CHECK LIST

Listed below is a check list of areas that need to be checked to see if done correctly.

- ☐ 1. All 6 main blocking points on trailer are secure.
- ☐ 2. Hydraulics are down and snug.
- ☐ 3. Hydraulic controls are unplugged.
- ☐ 4. All blocking points on up-rights are snug and secure.
- ☐ 5. All purlins are R keyed.
- ☐ 6. All X bracing R keyed.
- ☐ 7. All running track bolts are tight and R keyed.
- ☐ 8. All walk boards are secure.
- ☐ 9. All fence is in proper place and R keyed.
- ☐ 10. All 14 tubs pinned and R keyed (3 pins per Tub).
- ☐ 11. Exit step and platform are blocked and pinned.
- ☐ 12. Entrance steps are pinned and secure.
- ☐ 13. Wind brace cables attached to the base of the ride.
- ☐ 14. All corner scenery is pinned and R keyed. Do not walk on scenery wires.
- ☐ 15. All plugs for the scenery are secure.
- ☐ 16. All braces for the scenery are secure.
- ☐ 17. Three support tubes for top are in place.
- ☐ 18. Check for braces and keys for front sign.
- ☐ 19. The four main white posts have two pins per post and they are keyed.
- ☐ 20. Crane rail can be left up while ride is running. Check for safety cables.
- ☐ 21. Secure hoist so it won't move.
- ☐ 22. Lead-in cord is attached and phase is correct.

- ___ 23. Before any switch is turned on - check with a meter to see that correct power is coming into line. 220V - 3 phase
- ___ 24. Before you run ride - check so nobody is under ride.
- ___ 25. Make sure safety rules are clearly visible.
- ___ 26. Check ride daily for blocking, settling and readjust if needed.
- ___ 27. Make sure battery is charged and hooked-up.
- ___ 28. All service information has been completed.
Special emphasis on # 13 clean commutator ring.
If in a dusty area # 14 blow controller with dry air.
- ___ 29. Daily inspections schedule completed.
- ___ 30. Sound system has a maximum watt rating of 425 per channel. If you exceed this the amplifier is equipped with a thermal protector and will shut the system down. The rating is set at our factory if you adjust it, it could cause damage.
- ___ 31. Read operators manual and follow all safety instructions for proper set-up and tear down as well as ride operation.
- ___ 32. Failure to follow the above rules could cause undo ware or harm to your equipment. It could also void manufacturer's warranty on equipment. We can not stress this enough to have your ride foreman follow these and other instructions.

If you have any questions or comments, please call 1-216-457-2447.

Owner's Signature